



# ROOMS WITH A VIEW

EXCLUSIVE STOCKIST COPY  
CONFIDENTIAL  
UNTIL THE 26th OF MAY

SCAN TO VISIT THE CAL WEBSITE





# ROOMS WITH A VIEW

A CAL by Eleonora Tully of Coastal Crochet for King Cole

Add a touch of romance to your life with Rooms with a View Crochet Along blanket! There are two versions to choose from with two yarn options: One with the “lights off” with black as the dominant colour, and one with

the “lights on” with ecru as the dominant colour.

This blanket is made using a combination of different squares and rectangles and a few different stitching techniques. The pattern

starts with the large central window rectangle. Two rectangles and eight smaller squares are then crocheted and joined together around the central rectangle. Rounds are then crocheted around the entire blanket.

## LIGHTS OFF

*Black is the dominant colour*

Cottonsoft DK	Big Value DK 50g
5 x 746 Black	7 x 4053 Black
1 x 1576 Sage	2 x 3445 Sage
1 x 3461 Antique Gold	2 x 4027 Yellow
1 x 1850 Apricot	2 x 4093 Cameo
1 x 3459 Magenta	2 x 4056 Orchid
1 x 717 Violet	2 x 4038 Violet
1 x 1601 Lime	1 x 4049 Lime
1 x 718 Saxe	1 x 4040 Saxe
1 x 711 Ecru	1 x 4021 Cream
1 x 1575 Cloud	2 x 4097 Cornflower

## LIGHTS ON

*Ecru is the dominant colour*

YARN	Cottonsoft DK	Big Value DK 50g
A	5 x 711 Ecru	7 x 4021 Cream
B	1 x 1576 Sage	2 x 3445 Sage
C	1 x 3461 Antique Gold	2 x 4027 Yellow
D	1 x 1850 Apricot	2 x 4093 Cameo
E	1 x 3459 Magenta	2 x 4056 Orchid
F	1 x 717 Violet	2 x 4038 Violet
G	1 x 1601 Lime	1 x 4049 Lime
H	1 x 718 Saxe	1 x 4040 Saxe
I	1 x 746 Black	1 x 4053 Black
J	1 x 1575 Cloud	2 x 4097 Cornflower



Share your progress, and your room with a view, on our King Cole CAL Facebook Group!

## Pattern Notes

- There are two versions of this blanket with either Black or Ecru as the dominant colour. Black is 'Lights Off' in the room and Ecru is 'Lights On' in the room.
- There are some variations in the colours between using the Cottonsoft and Big Value yarns. Some colours are very similar and share the same colour name, whereas others are slightly different. All the colours have been carefully chosen.
- This blanket is made using a combination of different squares and rectangles. The pattern starts with the large central window rectangle. Two rectangles and eight smaller squares are then crocheted and joined together around the central rectangle. Rounds are then crocheted around the entire blanket.
- Black yarn can be a little challenging to crochet with at times because everything is just that little bit darker! When crocheting with black yarn try to ensure you have adequate lighting and don't be afraid to gently pull your work apart when needed to see exactly where the stitches should be going.
- The starting/turning chains count as the first stitch of each round or row throughout, unless otherwise indicated. It may help to put a stitch marker into the top of the starting/turning chains at the beginning of each round or row making it easier to identify them as a stitch and the correct place to insert your hook at the end of the round or subsequent rows.
- The Cottonsoft DK yarn crochets with a different tension than the Big Value DK, hence a smaller hook size is recommended.
- The larger hook size is only needed for the two Mosaic Crochet squares because mosaic crochet creates a dense fabric and going up half a hook size for these squares is recommended.



Follow along step-by-step on our YouTube channel



Join in on our CAL group on Facebook and share

## Part One

View One "Sunrise Through the Window"

View Two "Rolling Hills Leading Down to the Sea"

## Part Two

View Three "Heather on the Moors"

View Four "A City View"

View Five "A Balcony View across the Lake"

## Part Three

Ceiling Rose

## Part Four

View Six "Snow-Capped Mountains in the Distance"

View Seven "A Desert View"

Joining the Rectangles and Squares

## Part Five

The Border: Part One

## Part Six

The Border: Part Two

## Tension

**Cottonsoft DK:** 18 standard treble stitches across and 11 rows measures 10cm x 10cm using a 4.0mm hook.

**Big Value DK:** 17 standard treble stitches across and 10 rows measures 10cm x 10cm using a 4.5mm hook.

## Measurements

15cm x 95cm (45in x 37in) using **Cottonsoft DK**

120cm x 100cm (47in x 39in) using **Big Value DK**.

## Abbreviations

*in UK crochet terminology*

**blo:** back loop only

**BPhtr:** Back Post half treble (see Special Stitches)

**ch:** chain

**ch-sp(s):** chain space(s)

**dc:** double crochet

**dc2tog:** double crochet 2 stitches together

**dtr:** double treble

**FPdtr:** Front Post double treble (see Special Stitches)

**FPquadtr:** Front Post quadruple treble (see Special Stitches)

**FPquintr:** Front Post quintuple treble (see Special Stitches)

**FPsextTr:** Front Post sextuple treble (see Special Stitches)

**FPtrtr:** Front Post triple treble (see Special Stitches)

**htr:** half treble

**mm:** millimetres

**mtr:** mosaic treble (see Special Stitches)

**RS:** right side

**ss:** slip stitch

**st(s):** stitch(es)

**tr:** treble

**tr3tog:** treble 3 stitches together

**trtr:** triple treble

**WS:** wrong side

**yoh:** yarn over hook

## Special Stitches

**Back Post half treble:** complete a half treble st as normal but insert hook around the stem of the st inserting hook from right to left going from the back to the front and then round to the back again.

**Front Post double treble:** complete a double treble st as normal (the stitch starts by wrapping yarn around hook 2 times) but insert hook around the stem of the st inserting hook from right to left going from the front to the back and then round to the front again.

**Front Post quadruple treble:** complete a quadruple treble st as normal (the stitch starts by wrapping yarn around hook 4 times) but insert hook around the stem of the st inserting hook from right to left going from the front to the back and then round to the front again, (yoh, pull through 2 loops) until only one loop remains.

**Front Post quintuple treble:** complete a quintuple treble st as normal (the stitch starts by wrapping yarn around hook 5 times) but insert hook around the stem of the st inserting hook from right to left going from the front to the back and then round to the front again, (yoh, pull through 2 loops) until only one loop remains.

**Front Post sextuple treble:** complete a sextuple treble st as normal (the stitch starts by wrapping yarn around hook 6 times) but insert hook around the stem of the st inserting hook from right to left going from the front to the back and then round to the front again, (yoh, pull through 2 loops) until only one loop remains.

**Front Post triple treble:** complete a triple treble st as normal (the stitch starts by wrapping yarn around hook 3 times) but insert hook around the stem of the st inserting hook from right to left going from the front to the back and then round to the front again.

**Mosaic treble:** complete a treble st as normal but insert hook into missed st in the same colour directly below, 3 rows down. Work the stitch in front of the 2 rows of chains.

**RS Popcorn (right side popcorn):** 4tr in the next st or ch-sp, drop the loop from the hook, insert hook from front to back in top of first tr of 4-tr group, pick up dropped loop and pull through the first tr.

**WS Popcorn (wrong side popcorn):** 4tr in the next st or ch-sp, drop the loop from the hook, insert hook from back to front in top of first tr of 4-tr group, pick up dropped loop and pull through the first tr.

## Sunrise Through the Window!

*We begin with a sunrise in a room with a view. Pull back the curtains or open the blinds and look through the window to see the sky on fire with rich colours as a new day begins...*

*Pay attention to the colour changes throughout. Two balls of either Black or Ecu are used. This keeps the Black or Ecu yarn contained to one strip each and keeps the colour changes crisp. It also helps minimise the amount of ends that are created.*

*When changing between main colour and Black or Ecu in the middle of the rows, join the new colour at the final yoh of the stitch as indicated. Do not fasten off the previous colour used unless indicated otherwise.*

*The turning chains count as a stitch throughout unless indicated otherwise. You may want to use a stitch marker in the top of the turning chains making it easier to identify them as the correct stitch to crochet into at the end of the subsequent row.*

*As a guide the finished rectangle measures approximately 33cm x 48cm (13in x 19in) using Cottonsoft DK and 36cm x 50cm (14in x 20in) using Big Value DK*

Using **Yarn A** make 53ch.

**Row 1 (WS)** 1 tr in 4th ch from hook (the 3 missed ch count as first tr), 1 tr in each ch to end, join with **Yarn B** at end of final st (do not fasten off **Yarn A**), turn. [51 sts]

**In Row 2** crochet around **Yarn A** for the first 14 sts only ready for it to be re-joined for first vertical strip. A new ball of **Yarn A** is joined for the second vertical strip so that 2 separate balls are used throughout – one for each vertical strip. Each ball of **Yarn A** is left at the vertical strips ready to be re-joined each time.

**Row 2 (RS)** 3ch (counts as first tr here and throughout), 1 tr in blo of each of next 14 sts making sure you crochet around **Yarn A** to encase it and bring it along invisibly behind work, re-join **Yarn A** at end of 14th st, 1 FPtr around each of next 3 sts changing back to **Yarn B** at end of

3rd st (do not over tighten the loose strand from **Yarn B** going behind the 3 sts, this will be crocheted around in the next row to hide it), 1 tr in blo of each of next 15 sts changing to a new ball of **Yarn A** at end of 15th st, 1 FPtr around each of next 3 sts changing back to **Yarn B** at end of 3rd st, 1 tr in blo of each of next 15 sts, turn. [51 sts including 2 groups of raised 3 tr in **Yarn A**]

**Row 3 (WS)** 3ch, 1 tr in each of next 14 sts changing to **Yarn A** at end of 14th st, \* 1 tr in each of next 3 sts crocheting around both the loose strand of **Yarn B** from previous row and the current strand of **Yarn B**, change back to **Yarn B** at end of 3rd st, 1 tr in each of next 15 sts changing to next ball of **Yarn A** at end of 15th st, repeat from \* once more but at end of row do not change colour, turn. [51 sts including 2 groups of 3 tr in **Yarn A**]

**Row 4 (RS)** 3ch, 1 tr in each of next 14 sts changing to **Yarn A** at end of 14th st, \* 1 FPtr around each of next 3 sts changing back to main colour yarn at end of 3rd st (do not over tighten the loose strand of main colour going behind the 3 sts, this will be crocheted around in the next row to hide it), 1 tr in each of next 15 sts changing to next ball of **Yarn A** at end of 15th st, repeat from \* once more but at end of row do not change colour, turn. [51 sts including 2 groups of raised 3 tr in **Yarn A**]

**Row 5 (WS)** 3ch, 1 tr in each of next 14 sts changing to **Yarn A** at end of 14th st, \* 1 tr in each of next 3 sts crocheting around both the loose strand of yarn from previous row and the current strand of main colour changing back to main colour yarn at end of 3rd st, 1 tr in each of next 15 sts changing to next ball of **Yarn A** at end of 15th st,

repeat from \* once more but at end of row do not change colour, turn. [51 sts including 2 groups of 3 tr in **Yarn A**]

**Rows 6 - 9** Repeat Rows 4 - 5 two times, at end of Row 9 join with **Yarn C**.

**Rows 10 - 15** Repeat Rows 4 - 5 three times, at end of Row 15 join with **Yarn A** from nearest vertical strip trailing the loose strand along the top of the row (the final 15 sts) - this strand of yarn will be crocheted around in the next row to hide it. Do not fasten off **Yarn C**, this can be re-joined later.

**Row 16 (RS)** 3ch, 1tr in each of next 14 sts making sure you crochet around the loose strand of **Yarn A** to encase it and bring it along invisibly behind work, \* 1FPtr around each of next 3 sts, 1tr in of each of next 15 sts changing to second ball of **Yarn A** at end of 15th st, 1FPtr around each of next 3 sts, 1tr in of each of next 15 sts, turn. [51 sts]

**Row 17 (WS)** 2ch (counts as first htr), 1 htr in each of next 17 sts changing to next ball of **Yarn A** at end of 17th st, 1 htr in each st to end, re-join with **Yarn C** at end of final st, turn. [51 sts]

**Rows 18 - 19** Repeat Rows 2 - 3 once using **Yarn C** instead of **Yarn B**, at end of Row 19 join with **Yarn D**.

**Rows 20 - 27** Repeat Rows 4 - 5 four times, at end of Row 27 join with **Yarn E**.

**Rows 28 - 31** Repeat Rows 4 - 5 two times, at end of Row 31 join with **Yarn A** trailing the loose strand along the top of the final 15 sts - this strand of yarn will be crocheted around in the next row to hide it. Do not fasten off **Yarn E**, this can be re-joined later.

**Row 32 (RS)** 3ch, 1tr in each of next 14 sts making sure you crochet around the loose strand of **Yarn A** to encase it and bring it along invisibly behind work, \* 1FPtr around each of next 3 sts, 1tr in of each of next 15 sts changing to second ball of **Yarn A** at end of 15th st, 1FPtr around each of next 3 sts, 1tr in of each of next 15 sts, turn. [51 sts]

**Row 33 (WS)** 2ch (counts as first htr), 1 htr in each of next 17 sts changing to next ball of **Yarn A** at end of 17th st, 1 htr in each st to end, re-join with **Yarn E** at end of final st, turn. [51 sts]

**Rows 34 - 35** Repeat Rows 2 - 3 once using **Yarn E** instead of **Yarn B**.

**Rows 36 - 37** Repeat Rows 4 - 5, at end of Row 37 join with **Yarn F**.

**Rows 38 - 47** Repeat Rows 4 - 5 five times, at end of Row 47 join with **Yarn A** trailing the loose strand along the top of the final 15 sts - this strand of yarn will be crocheted around in the next row to hide it.

The next row is all crocheted using the same ball of **Yarn A**. The second ball used for the vertical strip can be fastened off.

**Row 48 (RS)** 3ch, 1tr in each of next 14 sts making sure you crochet around the loose strand of **Yarn A** to encase it and bring it along invisibly behind work, \* 1FPtr around each of next 3 sts, 1tr in of each of next 15 sts, repeat from \* once more, turn.

**Row 49 (WS)** 2ch (counts as first htr), 1 htr in next st and each st to end (do not fasten off), turn.

## BORDER

**Round 1 (RS)** 1 ch (does not count as st), miss first st, ss into next st, 3ch (counts as first tr), 2tr in same st, (miss 2 sts, 3tr in next st) to end, miss final st of side, 2ch (first corner made), rotate work ready to crochet down side edge, 2tr into side of first row and second row, continue down long side edge of blanket with \*7 groups of 3tr evenly spaced across next 14 rows, 4tr into centre point of rows in **Black** or **Ecrú**, repeat from \* once more, 7 groups of 3tr evenly spaced across next 14 rows, 3tr in side of

final row, 2ch (second corner), rotate work ready to crochet across bottom edge, miss base of first st, 3tr in base of next st, (miss base of next 2 sts, 3tr in base of next st) until end of side, miss final st, 2ch (third corner), rotate work ready to crochet up next side edge, 3tr into side of first row, continue up long side of blanket with \*7 groups of 3tr evenly spaced across next 14 rows, 4tr into centre point of rows in **Black** or **Ecrú**, repeat from \* once more, 7 groups of 3tr evenly spaced across next 14 rows, 2tr into side of each of final 2 rows, 2ch (final corner), ss to top of first

3 ch, turn. [17 groups of 3-tr along top and bottom, 22 groups of 3-tr plus 2 groups of 4-tr and 2 groups of 2-tr on each long side edge with 4 x corner 2-ch-sps]

**Round 2 (WS)** 3ch (counts as first tr), \*(2tr, 1 ch, 2tr) in corner ch-sp, 1 tr in each st to end of side, repeat from \* three times, ss to top of first 3 ch, fasten off. [55 sts along top and bottom and 82 sts on each side edge with 4 x corner 1-ch-sps]



## Rolling Hills Leading Down to the Sea

*A room with a beautiful view! Feel free to add to this view as desired. What else can you see through the window? Maybe add some appliques or surface crochet... or keep it simple, it's entirely up to you!*

As a guide the finished rectangle measures approximately 33cm x 24cm (13in x 9.5in) using Cottonsoft and 36cm x 25cm (14in x 10in) using Big Value DK

Using **Yarn A** make 53ch.

**Row 1 (WS)** 1tr in 4th ch from hook (the 3 missed ch count as first tr), 1tr in each ch to end, join with **Yarn G** at end of final st, turn. [51 sts]

**Row 2 (RS)** 3ch (counts as first tr here and throughout), 1tr in next st and each st to end, turn.

**Row 3 (WS)** Repeat Row 2.

**Row 4 (RS)** 4ch (counts as first dtr), \* 1tr in each of next 2 sts, 1htr in each of next 2 sts, 1dc in next st, 1htr in each of next 2 sts, 1tr in each of next 2 sts, 1dtr in next st, repeat from \* four times, turn.

**Row 5 (WS)** 3ch, 1tr in first st at base of 3 ch, \* 1tr in each of next 3 sts, tr3tog over next 3 sts, 1tr in each of next 3 sts\*\*, 3tr in next st, repeat from \* three times, 1tr in each of next 3 sts, tr3tog over next 3 sts, 1tr in each of next 3 sts, 2tr in final st, turn.

**Row 6 (RS)** Repeat Row 5.

**Row 7 (WS)** 3ch, 1tr in first st at base of 3 ch, \* 1tr in each of next 3 sts, dc3tog over next 3 sts, 1tr in each of next 3 sts, 3dtr in next st, repeat from \* three times, 1tr in each of next 3 sts, dc3tog over next 3 sts, 1tr in each of next 3 sts, 2tr in final st, join with **Yarn H** at end of final st, turn.

**Row 8 (RS)** 1ch (does not count as st), 1dc in blo of first st, \* 1htr in blo of each of next 2 sts, 1tr in blo of next st, 1dtr in blo of each of next 3 sts, 1tr in blo of next st, 1htr in blo of each of next 2 sts, 1dc in blo of next st, repeat from \* four times, turn.

**Row 9 (WS)** 3ch, 1tr in next st and each st to end, turn.

**Row 10 (RS)** 4ch (counts as first dtr), 1dtr in each of next 2 sts, \* 1tr in each of next 2 sts, 1htr in next st, 1dc in each of next 3 sts, 1htr in next st, 1tr in each of next 2 sts, 1dtr in each of next 3 sts, repeat from \* to end, join with **Ecru/Cream** at end of final st, turn.

**Row 11 (WS)** 1ch (does not count as st), 1dc in each st to end, join with **Yarn H** at end of final st, turn.

**Row 12 (RS)** 1ch (does not count as st), 1dc in each of first 3 sts, \* 1htr in each of next 2 sts, 1tr in next st, 1dtr in each of next 3 sts, 1tr in next st, 1htr in each of next 2 sts, 1dc in each of next 3 sts, repeat from \* to end, join with **Ecru/Cream** at end of final st, turn.

**Row 13 (WS)** 1ch (does not count as st), 1dc in each st to end, join with **Yarn J** at end of final st, turn.

**Row 14 (RS)** 3ch, 1tr in next st and each st to end, turn.

**Rows 15 – 21** Repeat Row 14 seven times, at the end of Row 21 join with **Yarn A**.

**Row 22 (RS)** 3ch, 1tr in next st and each st to end, turn.

**Row 23 (WS)** 2ch (counts as first htr), 1htr in next st and each st to end, turn.

## BORDER

**Round 1 (RS)** 1 ch (does not count as st), miss first st, ss into next st, 3ch (counts as first tr), 2tr in same st, (miss 2 sts, 3tr in next st) to end, miss final st of side, 2ch (first corner made), rotate work ready to crochet down side edge, continue down side edge with 12 groups of 3tr evenly spaced across the rows to bottom, 2ch (second corner),

rotate work ready to crochet across bottom edge, miss base of first st, 3tr in base of next st, (miss base of next 2 sts, 3tr in base of next st) until end of side, miss final st, 2ch (third corner), rotate work ready to crochet up next side edge, continue with 12 groups of 3tr evenly spaced across the rows, 2ch (final corner), ss to top of first 3 ch, turn. [17 groups of 3-tr along top and

bottom, 12 groups of 3-tr on each side edge with 4 x corner 2-ch-sps]

**Round 2 (WS)** 3ch (counts as first tr), \* (2tr, 1ch, 2tr) in corner ch-sp, 1 tr in each st to end of side, repeat from \* three times, ss to top of first 3 ch, fasten off. [55 sts along top and bottom and 40 sts on each side edge with 4 x corner 1-ch-sps]



*Join us next week for Heather on the Moors, A City View, and A Balcony View Across the Lake...*

## Heather on the Moors

*Views across the moors with purple moorland heathers covering much of the landscape. In this view the sun is setting and the silhouette of a single tree can be seen.*

Using **Yarn A**, make 38ch.

**Row 1 (WS)** 1 tr in 4th ch from hook (the 3 missed ch count as first tr), 1 tr in each ch to end, join with **Yarn B** at end of final st, turn. [36 sts]

*On Rows 2 - 13 do not cut the yarn after changing colour, it can be brought up the side and re-joined when next needed.*

**Row 2 (RS)** 3ch (counts as first tr here and throughout), 1 tr in next st and in each st to end, join with **Yarn F** at end of final st, turn.

**Row 3 (WS)** 1ch (does not count as st here and throughout), 1 dc in each of first 2 sts, (1 dtr in next st, 1 dc in next st) to end, join with **Yarn G** at end of final st, turn.

**Row 4 (RS)** 3ch, (1 htr in next st, 1 tr in next st) until final st, 1 tr in final st, re-join with **Yarn B** at end of final st, turn.

**Row 5 (WS)** Repeat Row 3 re-joining with **Yarn F** at end of row.

**Row 6 (RS)** Repeat Row 4 re-joining with **Yarn G** at end of row.

**Rows 7 - 12** Repeat Rows 3 - 4 three times more changing colours in sequence, from **Yarn B** to **Yarn F** to **Yarn G**, each time bringing the

yarn up from previous rows, at end of Row 12 do not change colour.

**Row 13 (WS)** 2ch (counts as first htr here and throughout), \* 1 dc in each of next 4 sts, 1 htr in next st, 1 tr in each of next 4 sts, 1 htr in next st, repeat from \* two times, 1 dc in each of next 4 sts, 1 htr in final st, re-join with **Yarn B** at end of final st, turn. [36 sts]

*In Row 14 the stitches are worked into the back loop only (blo).*

**Row 14 (RS)** 2ch, \* 1 tr in blo of each of next 4 sts, 1 htr in blo of next st, 1 dc in blo of each of next 4 sts, 1 htr in blo of next st, repeat from \* two times, 1 tr in blo of each of next 4 sts 1 htr in blo of final st, turn.

**Row 15 (WS)** 2ch, \* 1 tr in each of next 4 sts, 1 htr in next st, 1 dc in each of next 4 sts, 1 htr in next st, repeat from \* two times, 1 tr in each of next 4 sts 1 htr in final st, join with **Yarn C** at end of final st, turn.

*In Row 16 the stitches are worked into the back loop only (blo).*

**Row 16 (RS)** 2ch, \* 1 dc in blo of each of next 4 sts, 1 htr in blo of next st, 1 tr in blo of each of next 4 sts, 1 htr in blo of next st, repeat from \* two times, 1 dc in blo of each of next 4 sts, 1 htr in blo of final st, turn. [36 sts]

**Row 17 (WS)** 3ch, 1 tr in next st and each st to end, turn.

**Rows 18 - 19** Repeat Row 17, at the end of Row 19 join with **Yarn D**.

**Rows 20 - 21** Repeat Row 17, at the end of Row 21 join with **Yarn E**.

**Rows 22 - 24** Repeat Row 17, at the end of Row 24 fasten off.

### BORDER

**Round 1 (RS)** Keep RS facing and go back to beginning of Row 24, join **Yarn A** into second st in from the right, 3ch (counts as first tr), 2tr in same st, (miss 2 sts, 3tr in next st) to end, miss final st of side, 2ch (first corner made), rotate work ready to crochet down side edge, continue down side edge with 12 groups of 3tr evenly spaced across the rows to bottom, 2ch (second corner), rotate work ready to crochet across bottom edge, miss base of first st, 3tr in base of next st, (miss base of next 2 sts, 3tr in base of next st) until end of side, miss final st, 2ch (third corner), rotate work ready to crochet up next side edge, continue with 12 groups of 3tr evenly spaced across the rows to the top, 2ch (final corner), ss to top of first 3 ch, turn. [12 groups of 3-tr on each side with 4 x corner 2-ch-sps]  
**Round 2 (WS)** 3ch (counts as first tr), \* (2tr, 1ch, 2tr) in corner ch-sp, 1 tr in each st to end of side, repeat

from \* three times, ss to top of first 3 ch, fasten off. [55 sts along top and bottom and 40 sts on each side edge with 4 x corner 1-ch-sps]

## TREE

*The tree is made in one continuous piece. The pattern is broken down into stages to identify each part as it's made.*

Using **Black** make 9ch.

**Branch 1:** Make a further 9ch, 1 ss in 2nd ch from hook and in each of next 7 ch, Trunk: make 2 ch,

**Branch 2:** 8ch, 1 ss in 2nd ch from hook and in each of next 6 ch, Trunk: make 2 ch,

**Branch 3:** 7ch, 1 ss in 2nd ch from hook and in each of next 5 ch, Trunk: make 2 ch,

**Branch 4:** 5ch, 1 ss in 2nd ch from hook and in each of next 3 ch, Trunk: make 2 ch,

**Top Branches:** (4ch, 1 ss in 2nd ch from hook and in each of next 2 ch) three times.

Now work back down the trunk, 1 ss in each of next 2 ch of trunk, repeat branch 4, 1 ss in each of next 2 ch of trunk, repeat branch 3, 1 ss in each of next 2 ch of trunk, repeat branch 2, 1 ss in each of next 2 ch of trunk, repeat branch 1, 1 ss in each of next 2 ch, 1 dc in each of next 3 ch, 1 htr in each of next 4 ch, fasten off leaving a long tail of yarn to sew the tree in place on the square.



## A City View

*A room with an urban view. A large city, like the New York skyline, or a smaller town or suburban area. A room with a view that is constantly active, constantly changing and very busy!*

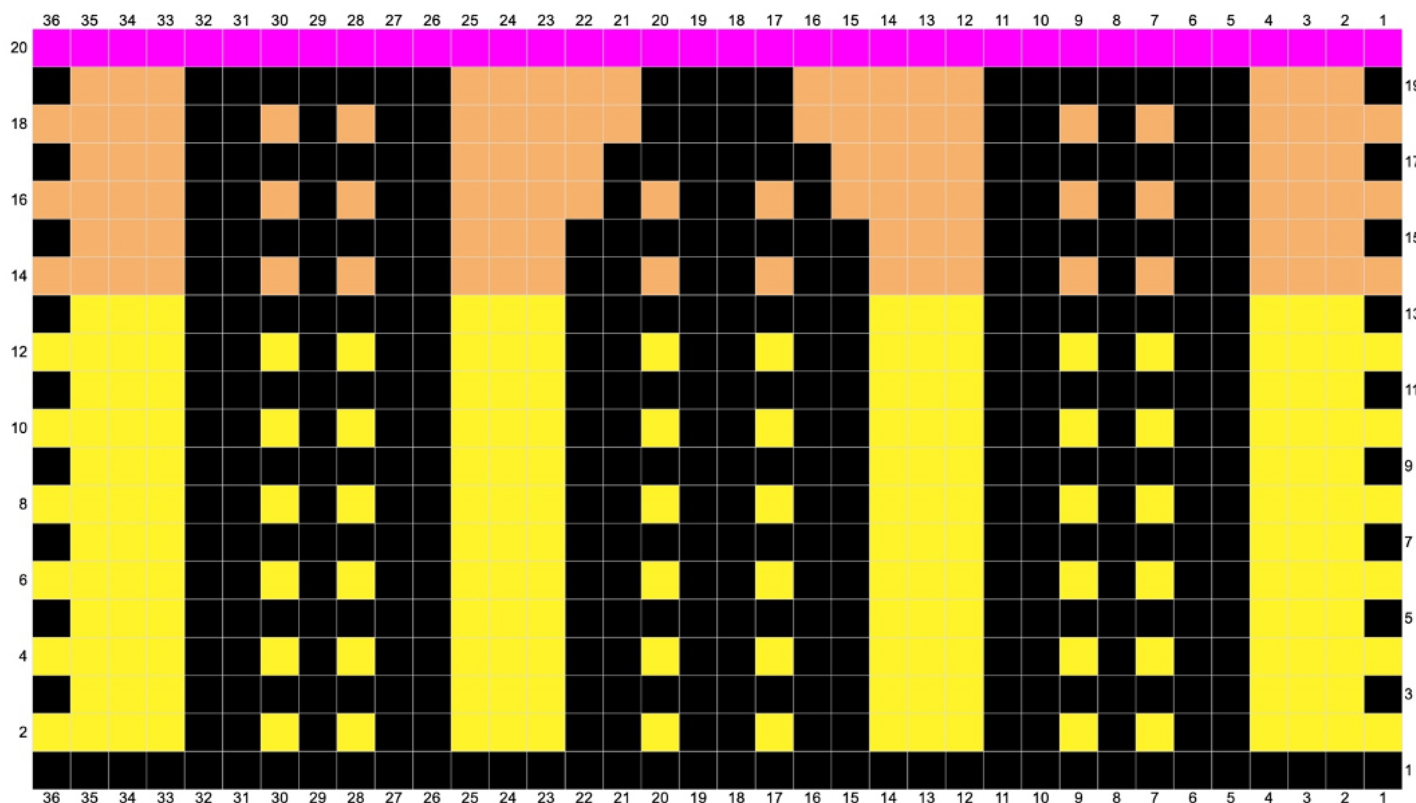
*This square is crocheted using the technique of inset Mosaic Crochet. Written instructions continue here but there is also a chart to follow if preferred.*

*I recommend using half a hook size larger than the hook you're using for the rest of the blanket. Mosaic crochet produces a dense fabric.*

*On the chart each square represents 1 stitch (either a double crochet, mosaic treble or chain-space). Each row on the chart represents TWO rows of crochet. Read RS rows from right to left and WS rows from left to right. It does not matter if you are left handed because the pattern is symmetrical. Each row begins with 1 ch and then 1 dc in first st, and each row ends with 1 dc in final st.*

*The first square on the RS rows indicates the colour to be used for that row. Do not fasten off the yarn at the end of each row, the yarn will be carried up along the side of the work to be joined again on subsequent rows.*

*On RS rows if the square is the same colour as the yarn being used work either a double crochet or mosaic treble. If the square is in the contrasting colour work 2 chains for 1 square, 3 chains for 2 squares, 4 chains for 3 squares etc and miss the corresponding stitches.*



Using **Black** and a hook half a hook size larger, make 37ch.

**Row 1 (RS)** 1dc in 2nd ch from hook and in each ch to end, turn. [36 sts]

**Row 2 (WS)** 1ch (does not count as st here and throughout), 1dc in each st, join with **Yarn C** at end of final st, turn. [36 sts]

**Row 3 (RS)** 1ch, 1dc in first 4 sts, 3ch, miss 2 sts, 1dc in next st, 2ch, miss 1 st, 1dc in next st, 3ch, miss 2 sts, 1dc in each of next 3 sts, (3ch, miss 2 sts, 1dc in next st) 3 times, 1dc in each of next 2 sts, 3ch, miss 2 sts, 1dc in next st, 2ch, miss 1 st, 1dc in next st, 3ch, miss 2 sts, 1dc in each of next 4 sts, turn.

**Row 4 (WS)** 1ch, 1dc in first 4 sts, 3ch, miss 3-ch-sp, 1dc in next st, 2ch, miss 2-ch-sp, 1dc in next st, 3ch, miss 3-ch-sp, 1dc in each of next 3 sts, (3ch, miss 3-ch-sp, 1dc in next st) 3 times, 1dc in each of next 2 sts, 3ch, miss 3-ch-sp, 1dc in next st, 2ch, miss 2-ch-sp, 1dc in next st, 3ch, miss 3-ch-sp, 1dc in each of next 4 sts, re-join with **Black** at end of final st, turn.

**Row 5 (RS)** 1ch, 1dc in first st, 4ch, miss 3 sts, 1mtr in each of next 2 sts, 1dc in next st, 1mtr in next st, 1dc in next st, 1mtr in each of next 2 sts, 4ch, miss 3 sts, (1mtr in each of next 2 sts, 1dc in next st) 2 times, 1mtr in each of next 2 sts, 4ch, miss 3 sts, 1mtr in each of next 2 sts, 1dc in next st, 1mtr in next st, 1dc in next st, 1mtr in each of next 2 sts, 4ch, miss 3 sts, 1dc in final st, turn.

**Row 6 (WS)** 1ch, 1dc in first st, 4ch, miss 4-ch-sp, 1dc in each of next 7 sts, 4ch, miss 4-ch-sp, 1dc in

each of next 8 sts, 4ch, miss 4-ch-sp, 1dc in each of next 7 sts, 4ch, miss 4-ch-sp, 1dc in final st, re-join with **Yarn C** at end of final st, turn.

**Row 7 (RS)** 1ch, 1dc in first st, 1mtr in each of next 3 sts, 3ch, miss 2 sts, 1dc in next st, 2ch, miss 1 st, 1dc in next st, 3ch, miss 2 sts, 1mtr in each of next 3 sts, (3ch, miss 2 sts, 1dc in next st) 2 times, 3ch, miss 2 sts, 1mtr in each of next 3 sts, 3ch, miss 2 sts, 1dc in next st, 2ch, miss 1 st, 1dc in next st, 3ch, miss 2 sts, 1mtr in each of next 3 sts, 1dc in final st, turn.

**Row 8 (WS)** 1ch, 1dc in first 4 sts, 3ch, miss 3-ch-sp, 1dc in next st, 2ch, miss 2-ch-sp, 1dc in next st, 3ch, miss 3-ch-sp, 1dc in each of next 3 sts, (3ch, miss 3-ch-sp, 1dc in next st) 3 times, 1dc in each of next 2 sts, 3ch, miss 3-ch-sp, 1dc in next st, 2ch, miss 2-ch-sp, 1dc in next st, 3ch, miss 3-ch-sp, 1dc in each of next 4 sts, re-join with **Black** at end of final st, turn.

**Rows 9 – 24** Repeat Rows 5 – 8 four times.

**Rows 25 – 26** Repeat Rows 5 – 6 once more, at the end of Row 26 join with **Yarn D**.

**Rows 27 – 28** Repeat Rows 7 – 8 once more.

**Rows 29 – 30** Repeat Rows 5 – 6 once more, at the end of Row 30 re-join with **Yarn D**.

**Row 31 (RS)** 1ch, 1dc in first st, 1mtr in each of next 3 sts, 3ch, miss 2 sts, 1dc in next st, 2ch, miss 1 st, 1dc in next st, 3ch, miss 2 sts, 1mtr in each of next 3 sts, 1dc in next st, 2ch, miss 1 st, 1dc in next st, 3ch, miss 2 sts, 1dc in next st, 2ch, miss

1 st, 1dc in next st, 1mtr in each of next 3 sts, 3ch, miss 2 sts, 1dc in next st, 2ch, miss 1 st, 1dc in next st, 3ch, miss 2 sts, 1mtr in each of next 3 sts, 1dc in final st, turn.

**Row 32 (WS)** 1ch, 1dc in first 4 sts, 3ch, miss 3-ch-sp, 1dc in next st, 2ch, miss 2-ch-sp, 1dc in next st, 3ch, miss 3-ch-sp, 1dc in each of next 4 sts, 2ch, miss 2-ch-sp, 1dc in next st, 3ch, miss 3-ch-sp, 1dc in next st, 2ch, miss 2-ch-sp, 1dc in each of next 4 sts, 3ch, miss 3-ch-sp, 1dc in next st, 2ch, miss 2-ch-sp, 1dc in next st, 3ch, miss 3-ch-sp, 1dc in each of next 4 sts, re-join with **Black** at end of final st, turn.

**Row 33 (RS)** 1ch, 1dc in first st, 4ch, miss 3 sts, 1mtr in each of next 2 sts, 1dc in next st, 1mtr in next st, 1dc in next st, 1mtr in each of next 2 sts, 5ch, miss 4 sts, 1mtr in next st, 1dc in next st, 1mtr in each of next 2 sts, 1dc in next st, 1mtr in next st, 5ch, miss 4 sts, 1mtr in each of next 2 sts, 1dc in next st, 1mtr in next st, 1dc in next st, 1mtr in each of next 2 sts, 4ch, miss 3 sts, 1dc in final st, turn.

**Row 34 (WS)** 1ch, 1dc in first st, 4ch, miss 4-ch-sp, 1dc in each of next 7 sts, 5ch, miss 5-ch-sp, 1dc in each of next 6 sts, 5ch, miss 5-ch-sp, 1dc in each of next 7 sts, 4ch, miss 4-ch-sp, 1dc in final st, re-join with **Yarn D** at end of final st, turn.

**Row 35 (RS)** 1ch, 1dc in first st, 1mtr in each of next 3 sts, 3ch, miss 2 sts, 1dc in next st, 2ch, miss 1 st, 1dc in next st, 3ch, miss 2 sts, 1mtr in each of next 4 sts, 1dc in next st, 5ch, miss 4 sts, 1dc in next st, 1mtr in each of next 4 sts, 3ch, miss 2 sts, 1dc in next st, 2ch, miss 1 st, 1dc in next st, 3ch, miss 2 sts, 1mtr in each

of next 3 sts, 1 dc in final st, turn.

**Row 36 (WS)** 1 ch, 1 dc in first 4 sts, 3 ch, miss 3-ch-sp, 1 dc in next st, 2 ch, miss 2-ch-sp, 1 dc in next st, 3 ch, miss 3-ch-sp, 1 dc in each of next 5 sts, 5 ch, miss 5-ch-sp, 1 dc in each of next 5 sts, 3 ch, miss 3-ch-sp, 1 dc in next st, 2 ch, miss 2-ch-sp, 1 dc in next st, 3 ch, miss 3-ch-sp, 1 dc in each of next 4 sts, re-join with Black at end of final st, turn.

**Row 37 (RS)** 1 ch, 1 dc in first st, 4 ch, miss 3 sts, 1 mtr in each of next 2 sts, 1 dc in next st, 1 mtr in next st, 1 dc in next st, 1 mtr in each of next 2 sts, 6 ch, miss 5 sts, 1 mtr in each of next 2 sts, 1 dc in next st, 1 mtr in next st, 1 dc in next st, 1 mtr in each of next 2 sts, 4 ch, miss 3 sts, 1 dc in final st, turn.

**Row 38 (WS)** 1 ch, 1 dc in first st, 4 ch, miss 4-ch-sp, 1 dc in each of next 7 sts, 6 ch, miss 6-ch-sp, 1 dc in each of next 4 sts, 6 ch, miss 6-ch-

sp, 1 dc in each of next 7 sts, 4 ch, miss 4-ch-sp, 1 dc in final st, join with **Yarn E** at end of final st, turn.

**Row 39 (RS)** 1 ch, 1 dc in first st, 1 mtr in each of next 3 sts, 1 dc in each of next 7 sts, 1 mtr in each of next 5 sts, 1 dc in each of next 4 sts, 1 mtr in each of next 5 sts, 1 dc in each of next 7 sts, 1 mtr in each of next 3 sts, 1 dc in final st, turn.

**Row 40 (WS)** 1 ch, 1 dc in first st and each st to end, turn. Now change back to the hook size used for the rest of the blanket for the remainder of the square.

**Row 41 (RS)** 3 ch, 1 tr in next st and each st to end, turn.

**Rows 42 – 44** Repeat Row 41 three times, at the end of Row 44 join with **Yarn A**, turn.

## BORDER

**Round 1 (RS)** 1 ch (does not count as st), miss first st, ss into next st,

3 ch (counts as first tr), 2 tr in same st, (miss 2 sts, 3 tr in next st) to end, miss final st of side, 2 ch (first corner made), rotate work ready to crochet down side edge, continue down side edge with 12 groups of 3 tr evenly spaced across the rows to bottom, 2 ch (second corner), rotate work ready to crochet across bottom edge, miss base of first st, 3 tr in base of next st, (miss base of next 2 sts, 3 tr in base of next st) until end of side, miss final st, 2 ch (third corner), rotate work ready to crochet up next side edge, continue with 12 groups of 3 tr evenly spaced across the rows, 2 ch (final corner), ss to top of first 3 ch, turn. [12 groups of 3-tr on each side with 4 x corner 2-ch-sps]

**Round 2 (WS)** 3 ch (counts as first tr), \*(2 tr, 1 ch, 2 tr) in corner ch-sp, 1 tr in each st to end of side, repeat from \* three times, ss to top of first 3 ch, fasten off. [55 sts along top and bottom and 40 sts on each side edge with 4 x corner 1-ch-sps]



## A Balcony View Across the Lake

*A room with a balcony and a view across the lake...  
spectacular! A balcony framed with plants creating a  
wonderful place to sit and enjoy the view...*

Pay attention to the colour changes throughout. For Rows 2 - 15 the intarsia method of colour changing is used for the plants at each side. This ensures neat, crisp colour changes, keeping the colours contained to each side and avoids trailing yarn across the work. Each patch of colour is crocheted using a different length of yarn.

You will need to cut a separate 200cm length of Yarn D for one of the plant pots and a 850cm length of Yarn G for one of the plants. Wind them into little balls. The main ball of colour can be used for the other pot and plant.

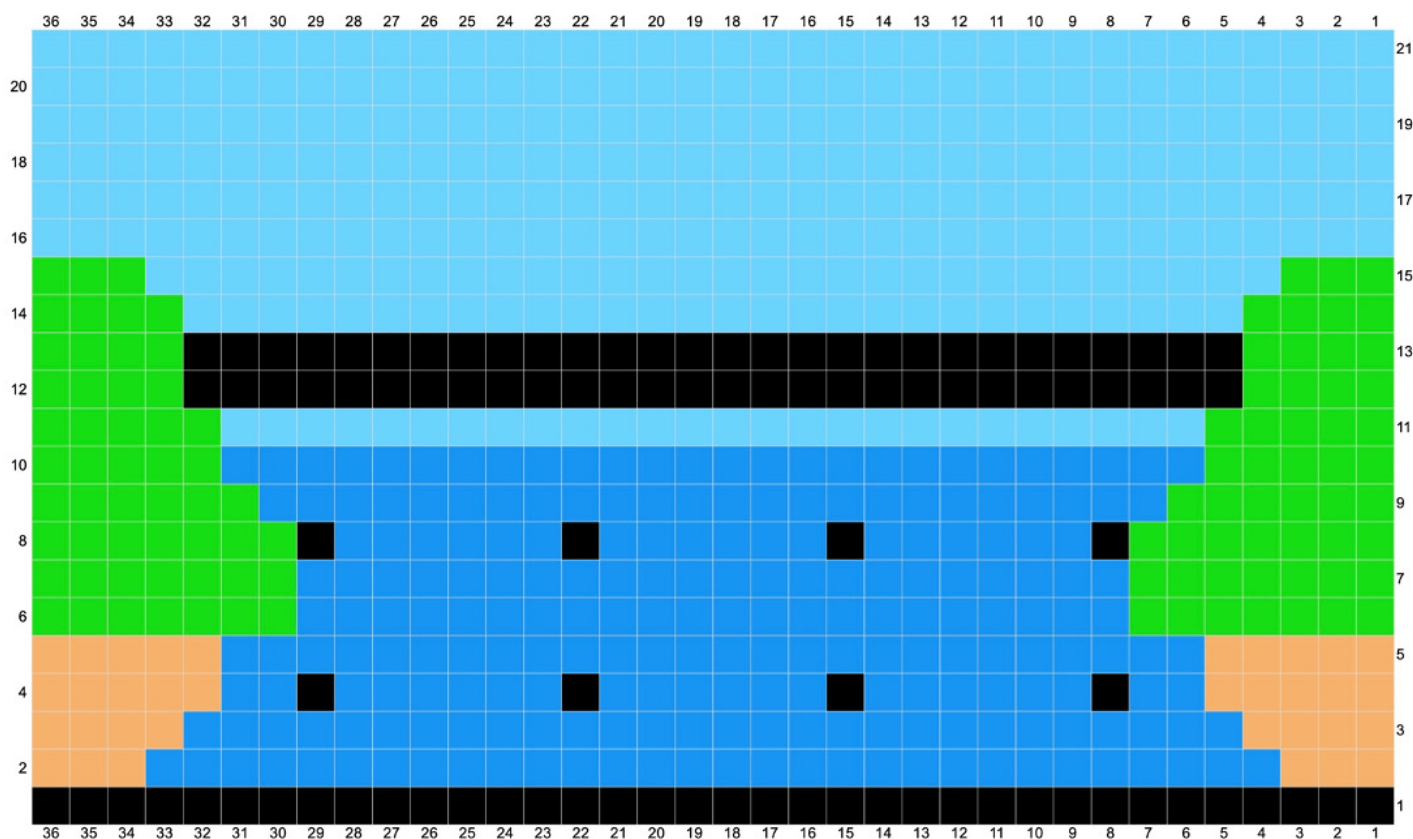
Make sure you keep the non-working yarn to the back (WS) of the work.

In the rows where the balcony railings are crocheted, crochet around the non-working black yarn in-between the raised sts to bring the yarn invisibly along and ready to be re-joined each time.

When changing colours join the new colour at the final yoh of the previous stitch as indicated. Do not fasten off the previous colour used unless indicated otherwise.

The chart can be used for rough guidance only for placement of colour, not for what stitch is used. There are different stitches, raised stitches and chain spaces used in the pattern which are not shown on the chart.

The turning chains count as a stitch throughout unless indicated otherwise. You may want to use a stitch marker in the top of the turning chains making it easier to identify them as the correct stitch to crochet into at the end of the subsequent row.



Using **Yarn A** make 38ch.

**Row 1 (WS)** 1 tr in 4th ch from hook (the 3 missed ch count as first tr), 1 tr in each ch to end, join with first ball of **Yarn D** at end of final st, turn. [36 sts]

**Row 2 (RS)** 3ch (counts as first tr here and throughout), 1 tr in each of next 2 sts, change to **Yarn H**, 1 tr in each of next 30 sts, change to next ball of **Yarn D**, 1 tr in each of next 3 sts, turn.

**Row 3 (WS)** 3ch, 1 tr in next st, 2tr in next st, change to **Yarn H**, miss next st, 1 tr in each of next 28 sts, change to next ball of **Yarn D**, miss next st, 2tr in next st, 1 tr in each of final 2 sts, turn.

*In Row 4 crochet around the non-working black Yarn in-between the raised sts to bring the yarn invisibly along and ready to be re-joined each time.*

**Row 4 (RS)** 3ch, 1 tr in each of next 2 sts, 2tr in next st, change to **Yarn H**, miss next st, 1 tr in each of next 2 sts, join with **Black** at end of second st, miss next st instead working 1FPquintr (the stitch starts by wrapping yarn around hook 5 times) around the 8th st in from the right in Row 1 changing back to **Yarn H** at end of st, \* 1 tr in each of next 6 sts, re-join with **Black** at end of 6th st, miss next st instead working 1FPquintr around the 7th st along from previous raised st in Row 1 changing back to **Yarn H** at end of st, repeat from \* two times, 1 tr in each of next 2 sts, change to next ball of **Yarn D**, miss next st, 2tr in next st, 1 tr in each of final 3 sts, turn.

**Row 5 (WS)** 3ch, 1 tr in each of next 4 sts, change to **Yarn H**, 1 tr in each of next 26 sts, change to next ball of **Yarn D**, 1 tr in each of next 5 sts, join with first ball of **Yarn G** at end of final st, turn.

**Row 6 (RS)** 3ch, 1 RS Popcorn in next st, (1 ch, miss next st, 1 RS Popcorn in next st) two times, 1 tr in next st, change to **Yarn H**, 1 tr in each of next 22 sts, change to second ball of **Yarn G**, 1 tr in next st, 1 RS Popcorn in next st, (1 ch, miss next st, 1 RS Popcorn in next st) two times, 1 tr in final st, turn.

**Row 7 (WS)** 3ch, 1 tr in top of first popcorn, 1 WS popcorn in 1-ch-sp before next popcorn, 1 ch, miss next popcorn, 1 WS popcorn in 1-ch-sp before next popcorn, 1 tr in top of next popcorn, 1 tr in next st, change to **Yarn H**, 1 tr in each of next 22 sts, change to second ball of **Yarn G**, 1 tr in next st, 1 tr in top of next popcorn, 1 WS popcorn in 1-ch-sp before next popcorn, 1 ch, miss next popcorn, 1 WS popcorn in 1-ch-sp before next popcorn, 1 tr in top of next popcorn, 1 tr in final st, turn. In Row 8 crochet around the non-working black yarn in-between the raised sts to bring the yarn invisibly along and ready to be re-joined each time.

**Row 8 (RS)** 3ch, 1 RS Popcorn in next st, 1 ch, miss next popcorn, 1 RS Popcorn in next 1-ch-sp before next popcorn, 1 ch, miss next popcorn, 1 RS Popcorn in next st, 1 tr in next st, change to **Black**, miss next st instead working 1FPsextTr (the stitch starts by wrapping yarn around hook 6 times) around the raised st below in Row 4 changing back to **Yarn H** at end of st, \* 1 tr

in each of next 6 sts, re-join with **Black** at end of 6th st, miss next st instead working 1FPsextTr around the next raised st below in Row 4 changing back to **Yarn H** at end of st, repeat from \* two times changing to next ball of **Yarn G** at end of final raised st, 1 tr in next st, 1 RS Popcorn in next st, 1 ch, miss next popcorn, 1 RS Popcorn in next 1-ch-sp before next popcorn, 1 ch, miss next popcorn, 1 RS Popcorn in next st, 1 tr in final st, turn.

**Row 9 (WS)** 3ch, 1 tr in top of first popcorn, 1 WS popcorn in 1-ch-sp before next popcorn, 1 ch, miss next popcorn, 1 WS popcorn in 1-ch-sp before next popcorn, 1 tr in top of next popcorn, change to **Yarn H**, 1 tr in each of next 24 sts, change to next ball of **Yarn G**, 1 tr in top of next popcorn, 1 WS popcorn in 1-ch-sp before next popcorn, 1 ch, miss next popcorn, 1 WS popcorn in 1-ch-sp before next popcorn, 1 tr in top of next popcorn, 1 tr in final st, turn.

**Row 10 (RS)** 3ch, 1 RS Popcorn in next st, 1 ch, miss next popcorn, 1 RS Popcorn in next 1-ch-sp before next popcorn, 1 tr in top of next popcorn, change to **Yarn H**, 1 tr in each of next 26 sts, change to next ball of **Yarn G**, 1 tr in top of next popcorn, 1 RS Popcorn in next 1-ch-sp before next popcorn, 1 ch, miss next popcorn, 1 RS Popcorn in next st, 1 tr in final st, turn.

**Row 11 (WS)** 3ch, 1 tr in top of first popcorn, 1 WS popcorn in 1-ch-sp before next popcorn, 1 tr in top of next popcorn, 1 tr in next st, change to **Yarn J**, 1 tr in each of next 26 sts, change to next ball of **Yarn G**, 1 tr in next st, 1 tr in top of next

popcorn, 1 WS popcorn in 1-ch-sp before next popcorn, 1tr in top of next popcorn, 1tr in final st, turn.

**Row 12 (RS)** 3ch, 1 RS Popcorn in next st, 1 RS Popcorn in top of next popcorn, 1tr in next st, change to **Black**, 1tr in each of next 3 sts, miss next st instead working 1FPquintr around the raised st below in Row 8, \* 1tr in each of next 6 sts, miss next st instead working 1FPquintr around the next raised st below in Row 8, repeat from \* two times, 1tr in each of next 3 sts, change to next ball of **Yarn G**, 1tr in next st, 1 RS Popcorn in top of next popcorn, 1 RS Popcorn in next st, 1tr in final st, turn.

**Row 13 (WS)** 1ch (does not count as st), 1dc in first st, 1dc in top of each of next 2 popcorns, 1dc in

next st, change to **Black**, 1dc in each of next 3 sts, 1BPhtr around next raised st, \* 1dc in each of next 6 sts, 1BPhtr around next raised st, repeat from \* two times, 1dc in each of next 3 sts, change to **Yarn G**, 1dc in next st, 1dc in top of each of next 2 popcorns, 1dc in final st, turn.

**Row 14 (RS)** 3ch, 1 RS Popcorn in each of next 2 sts, 1tr in next st, change to **Yarn J**, 1tr in blo of each of next 28 sts, change to **Yarn G**, 1tr in next st, 1 RS Popcorn in each of next 2 sts, 1tr in final st, turn.

**Row 15 (WS)** 3ch, 1 WS popcorn in top of first popcorn, 1tr in top of next popcorn, change to **Yarn J**, 1tr in each of next 30 sts, change to next ball of **Yarn G**, 1tr in top of next popcorn, 1 WS popcorn in top

of next popcorn, 1tr in final st, join with **Yarn J** at end of final st, turn.

**Row 16 (RS)** 3ch, 1tr in top of next popcorn, 1tr in each of next 32 sts, 1tr in top of next popcorn, 1tr in final st, turn.

**Row 17 (WS)** 3ch, 1tr in next st and each st to end, turn.

**Rows 18 – 21** Repeat Row 17 four times, at the end of Row 21 join with **Yarn A**, turn.

## BORDER

**Round 1 (RS)** 1ch (does not count as st), miss first st, ss into next st, 3ch (counts as first tr), 2tr in same st, (miss 2 sts, 3tr in next st) to end, miss final st of side, 2ch (first corner made), rotate work ready to crochet down side edge, continue down side edge with 12 groups of 3tr evenly spaced across the rows to bottom, 2ch (second corner), rotate work ready to crochet across bottom edge, miss base of first st, 3tr in base of next st, (miss base of next 2 sts, 3tr in base of next st) until end of side, miss final st, 2ch (third corner), rotate work ready to crochet up next side edge, continue with 12 groups of 3tr evenly spaced across the rows, 2ch (final corner), ss to top of first 3 ch, turn. [12 groups of 3-tr on each side with 4 x corner 2-ch-sps]

**Round 2 (WS)** 3ch (counts as first tr), \*(2tr, 1ch, 2tr) in corner ch-sp, 1tr in each st to end of side, repeat from \* three times, ss to top of first 3 ch, fasten off. [55 sts along top and bottom and 40 sts on each side edge with 4 x corner 1-ch-sps]



*Join us next week for Ceiling Rose...*

## Ceiling Rose (make 4)

*Let's take a moment to look inside the room. Maybe it's plain and simple, maybe it's colourful, maybe its ultra-modern or maybe it's filled with traditional décor. A bedroom, a living room, or even a kitchen. Here we have some decorative squares like a ceiling rose in an old hotel room, a vase of flowers in a corner, floral wallpaper or even a stained-glass window!*

Using **Yarn E**, make 4ch, ss to first ch to join into a ring (or make a magic circle).

**Round 1 (RS)** 3ch (does not count as st), 12tr into the ring, ss to first tr to join. [12 sts]

**Round 2** 3ch (now counts as first tr here and throughout), 1tr into same st at base of 3 ch, 2tr in next st and each st to end, ss to top of first 3 ch, fasten off (do not cut yarn, this can be re-joined in Round 4). [24 sts]

**Round 3** Join **Yarn C** into any st, 3ch, 1tr in same st, 1tr in next st, (2tr in next st, 1tr in next st) to end, ss to top of first 3 ch, fasten off. [36 sts]

**Round 4** Re-join **Yarn E** around the stem of any st inserting hook from right to left going from the back to the front and then round to the back again, 3ch, 1BPtr around same st, 1BPtr around each of next 2 sts, (2BPtr around next st, 1BPtr around each of next 2 sts) to end, ss to top of first 3 ch, fasten off. [48 sts]

**Round 5** Join **Ecru/Cream** into any st, 1ch (does not count as st), 1dc in same st, 1dc in each of next 3 sts, miss next 2 sts instead working (1FPtrtr, 2ch, 1FPtrtr) around the tr directly below them 3 rounds below in Round 2, \* 1dc in each of next 4 sts, miss next 2

sts instead working (1FPtrtr, 2ch, 1FPtrtr) around the third treble along from previous tr worked around in Round 2 (leave 2 sts in-between the raised sts in Round 2), repeat from \* six times, ss to first dc, fasten off. [8 groups of raised sts and 2-ch-sps with 4 dc in-between]

**Round 6** Join **Yarn C** into any 2-ch-sp, 3ch, 8tr in same place, 1ch, miss 6 sts, (9tr in next 2-ch-sp, 1ch, miss 6 sts) to end, ss to top of first 3 ch, fasten off. [8 shells of 9 tr plus 1-ch-sp in-between]

**Round 7** Join **Yarn E** into 1-ch-sp in-between any 2 groups of 9 tr, 3ch, 7tr in same place, \* miss next 9 sts instead working into 2 missed sts in same colour below in Round 4 with 1tr in first st, 2ch, 1tr in next st (work behind the shell in Round 6) \*\*, 8tr in 1-ch-sp before next group of 9 tr, repeat from \* seven times ending final repeat at \*\*, ss to top of first 3 ch, fasten off. [8 shells of 8 tr plus 8 groups of 2 tr with 2-ch-sp in-between]

**Round 8** Join **Black** into any 2-ch-sp in-between the 2 tr, 3ch, (3tr, 2ch, 4tr) in same place, 1ch, \* miss 10 sts, (4tr, 2ch, 4tr) all in next 2-ch-sp, 1ch, repeat from \* six times, ss to top of first 3 ch, fasten off. [8 groups of 8 tr plus 2 ch with 1-ch-sp in-between]

**Round 9** Join **Yarn G** into any 1-ch-sp in-between the groups of tr (not the 2-ch-sp in-between the 4 tr), 3ch, 2tr in same place, \* 1tr in each of next 2 sts (pay attention to crochet into the first st which is less clear to see), 1htr in next st, 1dc in next st, 2ch, miss 2-ch-sp, 1dc in next st, 1htr in next st, 1tr in each of next 2 sts \*\*, 3tr in next 1-ch-sp, repeat from \* seven times ending final repeat at \*\*, ss to top of first 3 ch, fasten off. [88 sts plus 8 x 2-ch-sps]

**Round 10** Join **Yarn J** into any 2-ch-sp in Round 8 (ensure hook also goes under the 2 ch from Round 9 to encase it and neaten - do this at each 2-ch-sp in this round), 4ch (counts as 1 tr and 1 ch), 1tr in same place, 1tr in each of next 11 sts, \*(1tr, 1ch, 1tr) in next 2-ch-sp in Round 8, 1tr in each of next 11 sts, repeat from \* six times, ss to 3rd ch of beginning 4 ch, fasten off. [104 sts plus 8 x 1-ch-sps]

*A square will now be created around the octagon. The next round is made working into the back loops only as indicated.*

**Round 11 (RS)** Join **Yarn D** into any 1-ch-sp, 6ch (counts as 1 dtr and 2 ch), 1dtr in same place, \* 1dtr in blo of each of next 3 sts, 1tr in blo of each of next 3 sts, 1htr in blo of each of next 3 sts, 1dc in blo of each of next 4 sts, miss 1 ch

and the 1-ch-sp, 1dc in blo of each of next 4 sts, 1htr in blo of each of next 3 sts, 1tr in blo of each of next 3 sts, 1dtr in blo of each of next 3 sts\*\*, (1dtr, 2ch, 1dtr) in next 1-ch-sp, repeat from \* three times ending final repeat at \*\*, ss to 4th ch of beginning 6 ch, do not fasten off, turn. [28 sts on each side plus 4 corner 2-ch-sps]

*The next round is made with the WS facing.*

**Round 12 (WS)** 4ch (counts as first dtr), 1dtr in next st, \* 1tr in each of next 3 sts, 1htr in each of next 4 sts, 1dc in each of next 10 sts, 1htr in each of next 4 sts, 1tr in each of next 3 sts, 1dtr in each of next 2 sts, (1dtr, 2ch, 1dtr) in next corner ch-sp\*\*, 1dtr in each of next 2 sts, repeat from \* three times ending final repeat at \*\*, ss to top of first 4 ch, fasten off, turn. [30 sts on each side plus 4 corner 2-ch-sps]

**Round 13 (RS)** Join **Yarn F** into any corner ch-sp, 5ch (counts as 1 tr and 2 ch), 1tr in same corner ch-sp, \* 1tr in each st to end of side, (1tr, 2ch, 1tr) in corner ch-sp, repeat from \* two times, 1tr in each st to end of side, ss to 3rd ch of beginning 5 ch, fasten off. [32 sts on each side plus 4 corner 2-ch-sps]

**Round 14 (RS)** Join **Black** into any corner ch-sp, 1ch (does not count as st), \* (1dc, 2ch, 1dc) in corner ch-sp, 1dc in each of next 14 sts, miss next st instead working 1FPquintr around the tr to the right of the 2-ch-sp in black below in Round 8, 1dc in each of next 2 sts, miss next st instead working 1FPquintr around the tr to the left of the 2-ch-sp below in Round 8, 1dc in each of next 14 sts, repeat from \* three times, ss to first dc, turn. [34 sts on each side with 4 x corner 2-ch-sps]

*The next round is made with the WS facing. For 'Lights Off' continue in Black. For 'Lights On' change to Ecru/Cream at end of Round 14 and use Ecru/Cream for Rounds 15 – 16.*

**Round 15 (WS)** 2ch (counts as first htr), \* 1htr in next st and each st to end of side, (1htr, 2ch 1htr) in corner ch-sp, repeat from \* three times, ss to top of first 2 ch, turn. [36 sts on each side with 4 x corner 2-ch-sps]

*The next round is made with the RS facing.*

**Round 16 (RS)** 3ch, 1tr in next st, \* (2tr, 1ch, 2tr) in corner ch-sp, 1tr in each st to end of side (pay attention to crochet into the final htr st of the side which is less clear to see), repeat from \* three times, ss to top of first 3 ch, fasten off. [40 sts on each side with 4 x corner 1-ch-sps]



*Join us next week for Snow-Capped Mountains in the Distance, A Desert View, and Joining...*

## Snow-Capped Mountains in the Distance

*A room with a mountain view. Snow-capped mountains can be seen in the distance and fresh mountain air fills the room!*

For Rows 10 - 17 the intarsia method of colour changing is used. This ensures neat and crisp colour changes between the mountains and sky and avoids trailing yarn across the work. Each patch of colour is crocheted using a different piece of yarn.

You will need to cut separate lengths of yarn as indicated and wind them into little balls. You may need longer lengths than indicated if your tension is looser.

**Yarn H:** 1 x 400cm length for use of the left side stitches and 2 x 600cm lengths for use either side of the central mountain. You can use the main ball of Yarn H without cutting it for the stitches to the right side.

**Yarn B:** 1 x 550cm length for use on the left mountain and 1 x 600cm length for use on the central mountain. You can use the main ball of Yarn B without cutting into smaller piece for the mountain on the right.

**Ecru/Cream:** 2 x 100cm for use at the top of the left and right mountains and 1 x 200cm for use at the top of the centre mountain.

Make sure you keep the non-working yarn to the back (WS) of the work.

Using **Yarn A** make 53ch.

**Row 1 (WS)** 1tr in 4th ch from hook (the 3 missed ch count as first tr), 1tr in each ch to end, join with **Yarn G** at end of final st, turn. [51 sts]

**Row 2 (RS)** 3ch (counts as first tr here and throughout), 1tr in next st and each st to end, turn.

**Row 3 (WS)** Repeat Row 2.

**Row 4 (RS)** 4ch (counts as first dtr), \* 1tr in each of next 2 sts, 1htr in each of next 2 sts, 1dc in next st, 1htr in each of next 2 sts, 1tr in each of next 2 sts, 1dtr in next st, repeat from \* four times, turn.

**Row 5 (WS)** 3ch, 1tr in first st at base of 3 ch, \* 1tr in each of next 3 sts, tr3tog over next 3 sts, 1tr in

each of next 3 sts, 3tr in next st, repeat from \* three times, 1tr in each of next 3 sts, tr3tog over next 3 sts, 1tr in each of next 3 sts, 2tr in final st, turn.

**Row 6 (RS)** Repeat Row 5.

**Row 7 (WS)** 3ch, 1tr in first st at base of 3 ch, \* 1tr in each of next 3 sts, dc3tog over next 3 sts, 1tr in each of next 3 sts, 3dtr in next st, repeat from \* three times, 1tr in each of next 3 sts, dc3tog over next 3 sts, 1tr in each of next 3 sts, 2tr in final st, join with main ball of **Yarn B** at end of final st, turn.

**Row 8 (RS)** 1ch (does not count as st), 1dc in blo of first st, \* 1htr in blo of each of next 2 sts, 1tr in blo of next st, 1dtr in blo of each of next 3 sts, 1tr in blo of next st, 1htr in blo of each of next 2 sts, 1dc in blo of

next st, repeat from \* four times, turn.

**Row 9 (WS)** 3ch, 1tr in next st and each st to end, turn.

**Row 10 (RS)** 3ch, 1tr in each of next 15 sts changing to first 600cm little ball of **Yarn H**, 1tr in next st changing to first 600cm little ball of **Yarn B**, 1tr in each of next 17 sts changing to second 600cm little ball of **Yarn H**, 1tr in next st changing to second 550cm little ball of **Yarn B**, 1tr in each of next 16 sts, join with third 400cm ball of **Yarn H** at end of final st, turn. All the little balls of **Yarn B** and **Yarn H** are now attached. When changing colours change to the ball of yarn which is allocated to the block of colour you're working on. This means there will be no ends trailing across the back of the work.

Use the chart for reference.

**Row 11 (WS)** 3ch, 1tr in next st, change to **Yarn B**, 1tr in each of next 13 sts, change to **Yarn H**, 1tr in each of next 3 sts, change to **Yarn B**, 1tr in each of next 15 sts, change to **Yarn H**, 1tr in each of next 3 sts, change to **Yarn B**, 1tr in each of next 13 sts, change to main ball of **Yarn H**, 1tr in each of final 2 sts, turn.

**Row 12 (RS)** 3ch, 1tr in each of next 2 sts, change to **Yarn B**, 1tr in each of next 11 sts, change to **Yarn H**, 1tr in each of next 5 sts, change to **Yarn B**, 1tr in each of next 13 sts, change to **Yarn H**, 1tr in each of next 5 sts, change to **Yarn B**, 1tr in each of next 11 sts, change to **Yarn H**, 1tr in each of final 3 sts, turn.

**Row 13 (WS)** 3ch, 1tr in each of next 3 sts, change to **Yarn B**, 1tr in each of next 9 sts, change to **Yarn H**, 1tr in each of next 7 sts, change to **Yarn B**, 1tr in each of next 11 sts, change to **Yarn H**, 1tr in each of next 7 sts, change to **Yarn B**, 1tr in each of next 9 sts, change to **Yarn H**, 1tr in each of final 4 sts, turn.

**Row 14 (RS)** 3ch, 1tr in each of next 4 sts, change to **Yarn B**, 1tr in each of next 7 sts, change to **Yarn H**, 1tr in each of next 9 sts, change to **Yarn B**, 1tr in each of next 9 sts, change to **Yarn H**, 1tr in each of next 9 sts, change to **Yarn B**, 1tr in each of next 7 sts, change to **Yarn H**, 1tr in each of final 5 sts, turn.

**Row 15 (WS)** 3ch, 1tr in each of next 5 sts, change to first little ball

of **Ecru/Cream**, 1tr in each of next 5 sts, change to **Yarn H**, 1tr in each of next 11 sts, change to second little ball of **Ecru/Cream**, 1tr in each of next 7 sts, change to **Yarn H**, 1tr in each of next 11 sts, change to third little ball of **Ecru/Cream**, 1tr in each of next 5 sts, change to **Yarn H**, 1tr in each of final 6 sts, turn.

**Row 16 (RS)** 3ch, 1tr in each of next 6 sts, change to **Ecru/Cream**, 1tr in each of next 3 sts, change to **Yarn H**, 1tr in each of next 13 sts, change to **Ecru/Cream**, 1tr in each of next 5 sts, change to **Yarn H**, 1tr in each of next 13 sts, change to **Ecru/Cream**, 1tr in each of next 3 sts, change to **Yarn H**, 1tr in each of final 7 sts, turn.

**Row 17 (WS)** 3ch, 1tr in each of next 7 sts, change to **Ecru/Cream**, 1tr in next st, change to **Yarn H**, 1tr in each of next 15 sts, change to **Ecru/Cream**, 1tr in each of next 3 sts, change to **Yarn H**, 1tr in each of next 15 sts, change to **Ecru/Cream**, 1tr in next st, change to **Yarn H**, 1tr in each of final 8 sts, turn.

*In Row 18 you can continue using the main ball of Yarn H all the way along.*

**Row 18 (RS)** 3ch, 1tr in each of next 24 sts, change to **Ecru/Cream**, 1tr in next st, change back to **Yarn H**, 1tr in each of next 25 sts, turn.

**Row 19 (WS)** 3ch, 1tr in next st and each st to end, turn.

**Row 20 (RS)** 3ch, 1tr in next st and each st to end, fasten off.

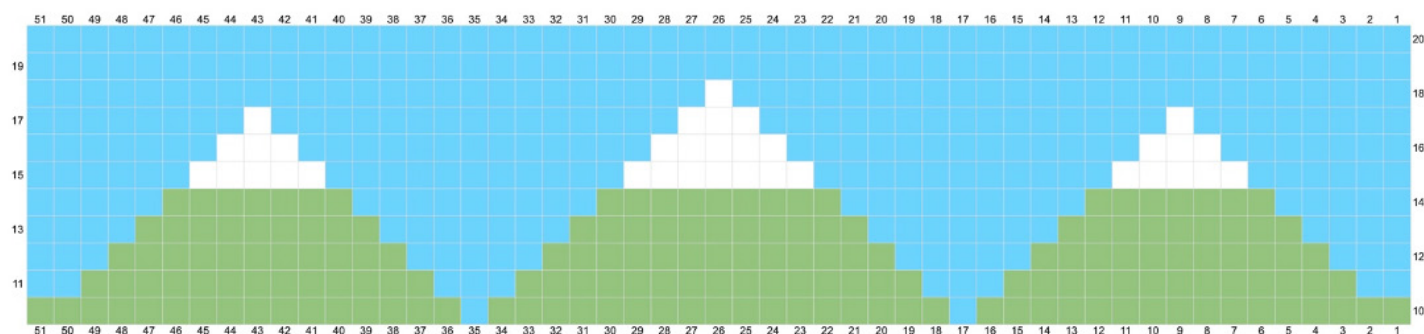
**Row 21 (RS)** Keep RS facing and go back to beginning of Row 20, join **Yarn A** into first st (the top of the first 3 ch), 3ch, 1tr in next st and each st to end, turn.

**Row 22 (WS)** 2ch (counts as first htr), 1htr in next st and each st to end, turn.

## BORDER

**Round 1 (RS)** 1ch (does not count as st), miss first st, ss into next st, 3ch (counts as first tr), 2tr in same st, (miss 2 sts, 3tr in next st) to end, miss final st of side, 2ch (first corner made), rotate work ready to crochet down side edge, continue down side edge with 12 groups of 3tr evenly spaced across the rows to bottom, 2ch (second corner), rotate work ready to crochet across bottom edge, miss base of first st, 3tr in base of next st, (miss base of next 2 sts, 3tr in base of next st) until end of side, miss final st, 2ch (third corner), rotate work ready to crochet up next side edge, continue with 12 groups of 3tr evenly spaced across the rows, 2ch (final corner), ss to top of first 3 ch, turn. [17 groups of 3-tr along top and bottom, 12 groups of 3-tr on each side edge with 4 x corner 2-ch-sps]

**Round 2 (WS)** 3ch (counts as first tr), \*(2tr, 1ch, 2tr) in corner ch-sp, 1tr in each st to end of side, repeat from \* three times, ss to top of first 3 ch, fasten off. [55 sts along top and bottom and 40 sts on each side edge with 4 x corner 1-ch-sps]



On the chart each square represents 1 tr stitch.  
We begin on a RS row. Read RS rows from  
right to left and WS rows from left to right. Each  
row begins with 3ch which counts as the first st.

Change colour at the final yoh of the stitch  
before the next colour.



## A Desert View

*A room with a view across the desert. Maybe it's a hotel room. It's hot outside but it's cool in the room as you gaze across the dry landscape...*

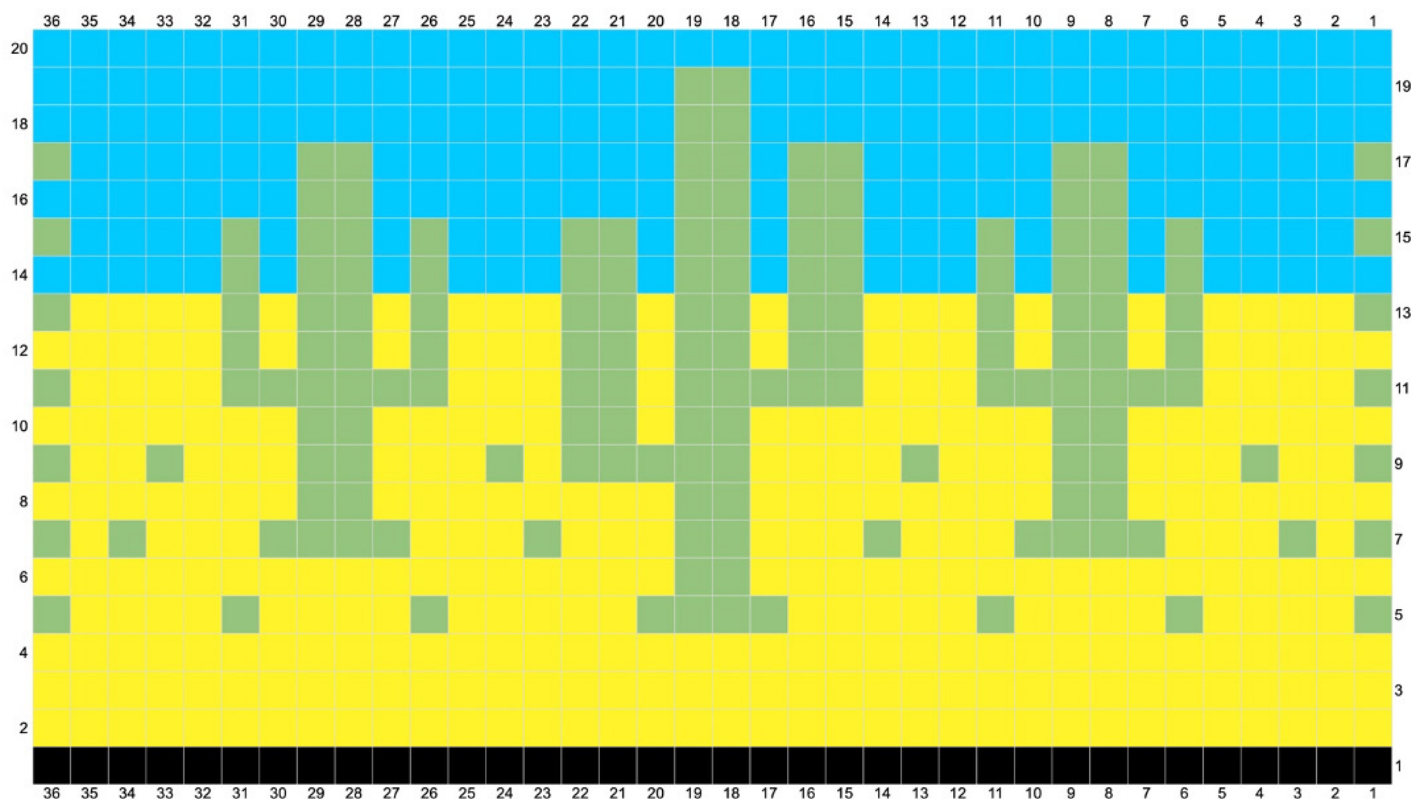
*This square is crocheted using the technique of inset Mosaic Crochet. Written instructions continue here but there is also a chart to follow if preferred.*

*I recommend using half a hook size larger than the hook you're using for the rest of the blanket. Mosaic crochet produces a dense fabric.*

*On the chart each square represents 1 stitch (either a double crochet, mosaic treble or chain-space). Each row on the chart represents TWO rows of crochet. Read RS rows from right to left and WS rows from left to right. Each row begins with 1 ch and then 1 dc in first st, and each row ends with 1 dc in final st.*

*The first square on the RS rows indicates the colour to be used for that row. Do not fasten off the yarn at the end of each row, the yarn will be carried up along the side of the work to be joined again on subsequent rows.*

*On RS rows if the square is the same colour as the yarn being used work either a double crochet or mosaic treble. If the square is in the contrasting colour work 2 chains for 1 square, 3 chains for 2 squares, 4 chains for 3 squares etc and miss the corresponding stitches.*



Using **Yarn A** and a hook half a hook size larger, make 37ch.

**Row 1 (RS)** 1dc in 2nd ch from hook and in each ch to end, turn. [36 sts]

**Row 2 (WS)** 1ch (does not count as st here and throughout), 1dc in each st, join with **Yarn C** at end of final st, turn. [36 sts]

**Rows 3 - 7** 1ch, 1dc in each st, turn.

**Row 8 (WS)** 1ch, 1dc in each st, join with **Yarn B** at end of final st, turn. [36 sts]

**Row 9 (RS)** 1ch, 1dc in first st, (5ch, miss 4 sts, 1dc in next st) 2 times, 6ch, miss 5 sts, 1dc in each of next 4 sts, 6ch, miss 5 sts, 1dc in next st, (5ch, miss 4 sts, 1dc in next st) 2 times, turn.

**Row 10 (WS)** 1ch, 1dc in first st, (5ch, miss 5-ch-sp, 1dc in next st) 2 times, 6ch, miss 6-ch-sp, 1dc in each of next 4 sts, 6ch, miss 6-ch-sp, 1dc in next st, (5ch, miss 5-ch-sp, 1dc in next st) 2 times, re-join with **Yarn C** at end of final st, turn.

**Row 11 (RS)** 1ch, 1dc in first st, (1mtr in each of next 4 sts, 1dc in next st) 2 times, 1mtr in each of next 5 sts, 1dc in next st, 3ch, miss 2 sts, 1dc in next st, 1mtr in each of next 5 sts, 1dc in next st, (1mtr in each of next 4 sts, 1dc in next st) 2 times, turn.

**Row 12 (WS)** 1ch, 1dc in first 17 sts, 3ch, miss 3-ch-sp, 1dc in each of next 17 sts, re-join with **Yarn B** at end of final st, turn.

**Row 13 (RS)** 1ch, 1dc in first st, 2ch, miss 1 st, 1dc in next st, 4ch, miss 3 sts, 1dc in each of next 4 sts, 4ch, miss 3 sts, 1dc in next st, 4ch, miss 3 sts, 1mtr in each of next 2 sts, (4ch, miss 3 sts, 1dc in next st) 2 times, 1dc in each of next 3 sts, 4ch, miss 3 sts, 1dc in next st, 2ch, miss 1 st, 1dc in final st, turn.

**Row 14 (WS)** 1ch, 1dc in first st, 2ch, miss 2-ch-sp, 1dc in next st, 4ch, miss 4-ch-sp, 1dc in each of next 4 sts, 4ch, miss 4-ch-sp, 1dc in next st, 4ch, miss 4-ch-sp, 1dc in each of next 2 sts, (4ch, miss 4-ch-sp, 1dc in next st) 2 times, 1dc in each of next 3 sts, 4ch, miss 4-ch-sp, 1dc in next st, 2ch, miss 2-ch-sp, 1dc in final st, re-join with **Yarn C** at end of final st, turn.

**Row 15 (RS)** 1ch, 1dc in first st, 1mtr in next st, 1dc in next st, 1mtr in each of next 3 sts, 1dc in next st, 3ch, miss 2 sts, (1dc in next st, 1mtr in each of next 3 sts) 2 times, 3ch, miss 2 sts, (1mtr in each of next 3 sts, 1dc in next st) 2 times, 3ch, miss 2 sts, 1dc in next st, 1mtr in each of next 3 sts, 1dc in next st, 1mtr in next st, 1dc in final st, turn.

**Row 16 (WS)** 1ch, 1dc in first 7 sts, (3ch, miss 3-ch-sp, 1dc in each of next 8 sts) 2 times, 3ch, miss 3-ch-sp, 1dc in each of next 7 sts, re-join with **Yarn B** at end of final st, turn.

**Row 17 (RS)** 1ch, 1dc in first st, 3ch, miss 2 sts, 1dc in next st, 4ch, miss 3 sts, 1mtr in each of next 2 sts, 4ch, miss 3 sts, 1dc in next st, 5ch, miss 4 sts, 1mtr in each of next 2 sts, 1dc in each of next 3 sts, 2ch, miss 1 st, 1dc in next st, 4ch, miss 3 sts, 1mtr in each of next 2 sts, 4ch, miss 3 sts, 1dc in next st, 3ch, miss 2 sts, 1dc in final st, turn.

**Row 18 (WS)** 1ch, 1dc in first st, 3ch, miss 3-ch-sp, 1dc in next st, 4ch, miss 4-ch-sp, 1dc in each of next 2 sts, 4ch, miss 4-ch-sp, 1dc in next st, 2ch, miss 2-ch-sp, 1dc in each of next 5 sts, 5ch, miss 5-ch-sp, 1dc in next st, 4ch, miss 4-ch-sp, 1dc in each of next 2 sts, 4ch, miss 4-ch-sp, 1dc in next st, 3ch, miss 3-ch-sp, 1dc in final st, re-join with **Yarn C** at end of final st, turn.

**Row 19 (RS)** 1ch, 1dc in first st, 1mtr in each of next 2 sts, 1dc in next st, 1mtr in each of next 3 sts, 3ch, miss 2 sts, 1mtr in each of next 3 sts, 1dc in next st, 1mtr in each of next 4 sts, 3ch, miss 2 sts, 1dc in next st, 3ch, miss 2 sts, 1mtr in next st, 1dc in next st, 1mtr in each of next 3 sts, 3ch, miss 2 sts, 1mtr in each of next 3 sts, 1dc in next st, 1mtr in each of next 2 sts, 1dc in final st, turn.

**Row 20 (WS)** 1ch, 1dc in first 7 sts, 3ch, miss 3-ch-sp, 1dc in each of next 5 sts, 3ch, miss 3-ch-sp, 1dc in next st, 3ch, miss 3-ch-sp, 1dc in each of next 8 sts, 3ch, miss 3-ch-sp, 1dc in each of next 7 sts, re-join with **Yarn B** at end of final st, turn.

**Row 21 (RS)** 1ch, 1dc in first st, 5ch, miss 4 sts, 1dc in each of next 2 sts, 1mtr in each of next 2 sts, 1dc in each of next 2 sts, 4ch, miss 3 sts, 1dc in each of next 3 sts, 1mtr in each of next 2 sts, 2ch, miss 1 st, 1mtr in each of next 2 sts, 4ch, miss 3 sts, 1dc in each of next 2 sts, 1mtr in each of next 2 sts, 1dc in each of next 2 sts, 5ch, miss 4 sts, 1dc in final st, turn.

**Row 22 (WS)** 1ch, 1dc in first st, 5ch, miss 5-ch-sp, 1dc in each of next 6 sts, 4ch, miss 4-ch-sp, 1dc in each of next 2 sts, 2ch, miss 2-ch-sp, 1dc in each of next 5 sts, 4ch,

miss 4-ch-sp, 1 dc in each of next 6 sts, 5ch, miss 5-ch-sp, 1 dc in final st, re-join with **Yarn C** at end of final st, turn.

**Row 23 (RS)** 1 ch, 1 dc in first st, 1 mtr in each of next 4 sts, 2ch, miss 1 st, 1 dc in next st, 3ch, miss 2 sts, 1 dc in next st, 2ch, miss 1 st, 1 mtr in each of next 3 sts, 3ch, miss 2 sts, 1 dc in next st, 3ch, miss 2 sts, 1 mtr in next st, 3ch, miss 2 sts, 1 mtr in each of next 3 sts, 2ch, miss 1 st, 1 dc in next st, 3ch, miss 2 sts, 1 dc in next st, 2ch, miss 1 st, 1 mtr in each of next 4 sts, 1 dc in final st, turn.

**Row 24 (WS)** 1 ch, 1 dc in first 5 sts, 2ch, miss 2-ch-sp, 1 dc in next st, 3ch, miss 3-ch-sp, 1 dc in next st, 2ch, miss 2-ch-sp, 1 dc in each of next 3 sts, (3ch, miss 3-ch-sp, 1 dc in next st) 3 times, 1 dc in each of next 2 sts, 2ch, miss 2-ch-sp, 1 dc in next st, 3ch, miss 3-ch-sp, 1 dc in next st, 2ch, miss 2-ch-sp, 1 dc in each of next 5 sts, re-join with **Yarn B** at end of final st, turn.

**Row 25 (RS)** 1 ch, 1 dc in first st, 5ch, miss 4 sts, 1 mtr in next st, 2ch, miss 1 st, 1 mtr in each of next 2 sts, 2ch, miss 1 st, 1 mtr in next st, 4ch, miss 3 sts, 1 mtr in each of next 2 sts, (2ch, miss 1 st, 1 mtr in each of next 2 sts) 2 times, 4ch, miss 3 sts, 1 mtr in next st, 2ch, miss 1 st, 1 mtr in each of next 2 sts, 2ch, miss 1 st, 1 mtr in next st, 5ch, miss 4 sts, 1 dc in final st, turn.

**Row 26 (WS)** 1 ch, 1 dc in first st, 5ch, miss 5-ch-sp, 1 dc in next st, 2ch, miss 2-ch-sp, 1 dc in each of next 2 sts, 2ch, miss 2-ch-sp, 1 dc in next st, 4ch, miss 4-ch-sp, 1 dc in each of next 2 sts, (2ch, miss 2-ch-sp, 1 dc in each of next 2 sts)

2 times, 4ch, miss 4-ch-sp, 1 dc in next st, 2ch, miss 2-ch-sp, 1 dc in each of next 2 sts, 2ch, miss 2-ch-sp, 1 dc in next st, 5ch, miss 5-ch-sp, 1 dc in final st, join with **Yarn J** at end of final st, turn.

**Row 27 (RS)** 1 ch, 1 dc in first st, 1 mtr in each of next 4 sts, 2ch, miss 1 st, 1 mtr in next st, 3ch, miss 2 sts, 1 mtr in next st, 2ch, miss 1 st, 1 mtr in each of next 3 sts, (3ch, miss 2 sts, 1 mtr in next st) 3 times, 1 mtr in each of next 2 sts, 2ch, miss 1 st, 1 mtr in next st, 3ch, miss 2 sts, 1 mtr in next st, 2ch, miss 1 st, 1 mtr in each of next 4 sts, 1 dc in final st, turn.

**Row 28 (WS)** 1 ch, 1 dc in first 5 sts, 2ch, miss 2-ch-sp, 1 dc in next st, 3ch, miss 3-ch-sp, 1 dc in next st, 2ch, miss 2-ch-sp, 1 dc in each of next 3 sts, (3ch, miss 3-ch-sp, 1 dc in next st) 3 times, 1 dc in each of next 2 sts, 2ch, miss 2-ch-sp, 1 dc in next st, 3ch, miss 3-ch-sp, 1 dc in next st, 2ch, miss 2-ch-sp, 1 dc in each of next 5 sts, re-join with **Yarn B** at end of final st, turn.

**Rows 29 - 30** Repeat Rows 25 - 26

**Row 31 (RS)** 1 ch, 1 dc in first st, 1 mtr in each of next 4 sts, 1 dc in next st, 1 mtr in next st, 3ch, miss 2 sts, 1 mtr in next st, 1 dc in next st, 1 mtr in each of next 3 sts, (3ch, miss 2 sts, 1 mtr in next st) 2 times, 1 dc in each of next 2 sts, 1 mtr in each of next 3 sts, 1 dc in next st, 1 mtr in next st, 3ch, miss 2 sts, 1 mtr in next st, 1 dc in next st, 1 mtr in each of next 4 sts, 1 dc in final st, turn.

**Row 32 (WS)** 1 ch, 1 dc in first 7 sts, 3ch, miss 3-ch-sp, 1 dc in each

of next 8 sts, (3ch, miss 3-ch-sp, 1 dc in next st) 2 times, 1 dc in each of next 4 sts, 3ch, miss 3-ch-sp, 1 dc in each of next 7 sts, re-join with **Yarn B** at end of final st, turn.

**Row 33 (RS)** 1 ch, 1 dc in first st, 7ch, miss 6 sts, 1 mtr in each of next 2 sts, 6ch, miss 5 sts, 1 mtr in each of next 2 sts, 2ch, miss 1 st, 1 mtr in each of next 2 sts, 9ch, miss 8 sts, 1 mtr in each of next 2 sts, 7ch, miss 6 sts, 1 dc in final st, turn.

**Row 34 (WS)** 1 ch, 1 dc in first st, 7ch, miss 7-ch-sp, 1 dc in each of next 2 sts, 9ch, miss 9-ch-sp, 1 dc in each of next 2 sts, 2ch, miss 2-ch-sp, 1 dc in each of next 2 sts, 6ch, miss 6-ch-sp, 1 dc in each of next 2 sts, 7ch, miss 7-ch-sp, 1 dc in final st, re-join with **Yarn J** at end of final st, (fasten off **Yarn B**), turn.

**Row 35 (RS)** 1 ch, 1 dc in first st, 1 mtr in each of next 6 sts, 1 dc in each of next 2 sts, 1 mtr in each of next 5 sts, 1 dc in each of next 2 sts, 1 mtr in next st, 3ch, miss 2 sts, 1 mtr in each of next 8 sts, 1 dc in each of next 2 sts, 1 mtr in each of next 6 sts, 1 dc in final st, turn.

**Row 36 (WS)** 1 ch, 1 dc in first 17 sts, 3ch, miss 3-ch-sp, 1 dc in each of next 17 sts, (do not change colour), turn.

*For the central cactus in Rows 37 and 38 only a small amount of Yarn B is used in the middle of the row as indicated.*

**Row 37 (RS)** 1 ch, 1 dc in first 17 sts, change to **Yarn B**, 1 mtr in each of next 2 sts, change back to **Yarn J** (do not fasten off **Yarn B**), 1 dc in each of next 17 sts, turn.

**Row 38 (WS)** 1ch, 1dc in first 17 sts, change to **Yarn B**, 1dc in each of next 2 sts, change back to Yarn J (fasten off **Yarn B**), 1dc in each of next 17 sts, turn.

**Rows 39 - 40** 1ch, 1dc in each st to end, turn.

*Now change back to the hook size used for the rest of the blanket for the remainder of the square.*

**Row 41 (RS)** 3ch, 1tr in next st and each st to end, turn.

**Rows 42 – 44** Repeat Row 41 three times, at the end of Row 44 join with **Yarn A**, turn.

## BORDER

**Round 1 (RS)** 1ch (does not count as st), miss first st, ss into next st, 3ch (counts as first tr), 2tr in same st, (miss 2 sts, 3tr in next st) to end, miss final st of side, 2ch (first corner made), rotate work ready to crochet down side edge, continue down side edge with 12 groups of 3tr evenly spaced across the rows to bottom, 2ch (second corner), rotate work ready to crochet across bottom edge, miss base of first st, 3tr in base of next st, (miss base of next 2 sts, 3tr in base of next st) until end of side, miss final st, 2ch (third corner), rotate work ready to crochet up next side edge, continue with 12 groups of 3tr evenly spaced across the rows, 2ch (final corner),

ss to top of first 3 ch, turn. [12 groups of 3-tr on each side with 4 x corner 2-ch-sps]

**Round 2 (WS)** 3ch (counts as first tr), \*(2tr, 1ch, 2tr) in corner ch-sp, 1tr in each st to end of side, repeat from \* three times, ss to top of first 3 ch, fasten off. [55 sts along top and bottom and 40 sts on each side edge with 4 x corner 1-ch-sps]

## SUN

Using **Yarn C**, make a magic ring. Round 1 (RS) 4ch (does not count as st), 16dtr into the ring, ss to top of first dtr to join, fasten off [16 sts] Using photo as a guide, sew sun onto main square.



## Joining the Rectangles and Squares

*All the rectangles and squares will now be joined. Lay out the rectangles and squares using photo as a guide.*

Start with View 1 (the main central rectangle) and join it to View 2. Position the top of View 2 so it touches the bottom of View 1. Place the WS facing together and RS facing outwards, with the edges held ready to crochet them together.

### JOINING RECTANGLES

Join **Yarn A** into the outer right corner ch-sp of the front rectangle only, 1 ch, insert hook into corresponding corner ch-sp on back rectangle, make 1 ss followed by 1 ch, 1 ss in first st on front rectangle, 1 ch, miss first st on back rectangle, 1 ss in next st on back rectangle, 1 ch, \*miss 1 st on front rectangle, 1 ss in next st on front rectangle, 1 ch, miss 1 st on back rectangle, 1 ss in next st on back rectangle, 1 ch, repeat from \* across side to final st on front rectangle, 1 ch, miss final st on back rectangle, 1 ss in corner ch-sp on

back rectangle, 1 ch, 1 ss in corner ch-sp on front rectangle, fasten off.

Next join View 6 (the snow-capped mountains) to View 1. Position the bottom of View 6 so it touches the top of View 1. Place the WS facing together and RS facing outwards, with the edges held ready to crochet them together. Follow instructions for 'joining rectangles' above.

Now join the four squares on the right side to each other to form a long vertical strip and then the squares on the left side to form a long vertical strip. The squares are joined in the same way as the rectangles but because there are 40 sts across you will end on the back square instead each time. Follow instructions for 'joining squares' below.

### JOINING SQUARES

Join **Yarn A** into the outer right corner ch-sp of the front square only, 1 ch, insert hook into corresponding corner ch-sp on back square, make 1 ss followed by 1 ch, 1 ss in first st on front square, 1 ch, miss first st on back square, 1 ss in next st on back square, 1 ch, \*miss 1 st on front square, 1 ss in next st on front square, 1 ch, miss 1 st on back square, 1 ss in next st on back square, 1 ch, repeat from \* across side to final st on back square, 1 ch, miss final st on front square, 1 ss in corner ch-sp on front square, 1 ch, 1 ss in corner ch-sp on back square, fasten off.

Join the 3 strips together following the same joining method. Place the WS facing together and RS facing outwards. Each time a corner ch-sp is reached work into the corner ch-sps of both the front and back square or rectangle as in the 'joining squares' instructions above. Continue to work into alternate sts across.



*Join us next week for The Border: Part One...*

## The Border: Part One

*The whole blanket will now be crocheted around.  
Stripes will be created like shutters or blinds framing  
the window and letting light through!*

With RS of blanket facing and held upright, join Yarn A into outer corner ch-sp of Ceiling Rose square at top right of blanket ready to crochet along top edge.

**Round 1 (RS)** 1 ch (does not count as st), \*(1 dc, 2ch, 1 dc) in corner ch-sp, 1 dc in each of next 40 sts, 1 dc in each of next 2 corner ch-sps, 1 dc in each of next 55 sts, 1 dc in each of next 2 corner ch-sps, 1 dc in each of next 40 sts, (1 dc, 2ch, 1 dc) in next corner ch-sp, 1 dc in each of next 40 sts, (1 dc in each of next 2 ch-sps, 1 dc in each of next 40 sts) three times, repeat from \* across bottom edge and next side edge, ss to first dc, turn. [141 sts along top and bottom and 168 sts along the side edges with 4 x corner 2-ch-sps]

*The next round is made with the WS facing.*

**Round 2 (WS)** 3ch (counts as first tr), \* 1 tr in each st to end of side, (2tr, 2ch, 2tr) in corner ch-sp, repeat from \* three times, ss to top of first 3 ch, turn. [145 sts along top and bottom and 172 sts on each side edge with 4 x corner 1-ch-sps] The next round is made with the RS facing.

**Round 3 (RS)** 3ch (counts as first tr), 1 tr in each of next 2 sts, \*(2tr, 2ch, 2tr) in corner ch-sp, 1 tr in each st to end of side, repeat from \* three times, ss to top of first 3 ch, fasten off. [149 sts along top and bottom and 176 sts on each side

edge with 4 x corner 1-ch-sps] In Rounds 4 – 14 do not cut Yarn A when changing colour. Bring the ball of yarn through the final loop of each round to close the round and leave yarn attached on the WS of the work ready to pick up again when instructed. This avoids lots of ends because the yarn can be re-joined in subsequent rounds. These rounds are made with the RS facing at all times.

**Round 4 (RS)** Join Yarn A into corner ch-sp at top right of blanket ready to crochet along top edge, 5ch (counts as 1 tr and 2 ch), 1 tr in same corner ch-sp, \*(6ch, miss 5 sts, 1 tr in each of next 4 sts) 16 times, 6ch, miss final 5 sts, (1 tr, 2ch, 1 tr) in corner ch-sp, (6ch, miss 5 sts, 1 tr in each of next 4 sts) 19 times, 6ch, miss final 5 sts \*\*, (1 tr, 2ch, 1 tr) in corner ch-sp, repeat from \* to \*\* once more, ss to 3rd ch of beginning 5 ch, fasten off but do not cut yarn. [16 groups of 4 tr on top and bottom with ch-sps in-between, 19 groups of 4 tr on side edges with ch-sps in-between and 4 x 2 tr in each corner]

*In Rounds 5 - 19 crochet into the missed sts two rounds below – pay attention to leave the strands of chains loose at the back and do not crochet around them. This helps to keep the colours solid at the front.*

**Round 5 (RS)** Join Yarn B into corner ch-sp diagonally opposite from where Yarn A was joined, 1 ch (does not count as st), \*(1 dc, 2ch,

1 dc) in corner ch-sp, 2ch, miss 1 st, 1 tr in each of next 5 sts, (5ch, miss 4 sts, 1 tr in each of next 5 sts) to end of side, 2ch, miss final st of side, repeat from \* three times, ss to first dc, fasten off. [17 groups of 5 tr on top and bottom with ch-sps in-between, 20 groups of 5 tr on side edges with ch-sps in-between, plus extra sts in each corner ch-sp and 4 x corner 2-ch-sps]

**Round 6 (RS)** Re-join Yarn A into corner ch-sp, 5ch (counts as 1 tr and 2 ch), 1 tr in same corner ch-sp, \*2ch, miss 1 st, 1 tr in missed st in Round 4, (6ch, miss 5 sts, 1 tr in each of next 4 sts) 16 times, 6ch, miss 5 sts, 1 tr in next missed st in Round 4, 2ch, miss final st of side, (1 tr, 2ch, 1 tr) in corner ch-sp, 2ch, miss 1 st, 1 tr in missed st in Round 4, (6ch, miss 5 sts, 1 tr in each of next 4 sts) 19 times, 6ch, miss 5 sts, 1 tr in next missed st in Round 4, 2ch, miss final st of side \*\*, (1 tr, 2ch, 1 tr) in corner ch-sp, repeat from \* to \*\* once more, ss to 3rd ch of beginning 5 ch, fasten off.

**Round 7 (RS)** Join Yarn C into corner ch-sp diagonally opposite from where Yarn A was joined, 1 ch (does not count as st), \*(1 dc, 2ch, 1 dc) in corner ch-sp, 2ch, miss 1 st, 1 tr in missed st in Round 5, 2ch, miss 1 st, 1 tr in each of next 5 sts, (5ch, miss 4 sts, 1 tr in each of next 5 sts) to final group of 5 sts at end of side, 2ch, miss 1 st, 1 tr in missed st in Round 5, 2ch, miss 1 st, repeat from \* three times, ss to first dc, fasten off.

*Join us next week for The Border: Part Two...*

## The Border: Part Two

*The whole blanket will now be crocheted around.  
Stripes will be created like shutters or blinds framing  
the window and letting light through!*

**Round 8 (RS)** Re-join **Yarn A** into corner ch-sp, 5ch (counts as 1 tr and 2 ch), 1tr in same corner ch-sp, \*(2ch, miss 1 st, 1tr in missed st in Round 6) two times, (6ch, miss 5 sts, 1tr in each of next 4 sts) to final group of 4 sts at end of side, 6ch, miss 5 sts, (1tr in next missed st in Round 6, 2ch, miss 1 st) two times\*\*, (1tr, 2ch, 1tr) in corner ch-sp, repeat from \* three times ending final repeat at \*\*, ss to 3rd ch of beginning 5 ch, fasten off.

**Round 9 (RS)** Join **Yarn D** into corner ch-sp diagonally opposite from where Yarn A was joined, 1ch (does not count as st), \*(1dc, 2ch, 1dc) in corner ch-sp, (2ch, miss 1 st, 1tr in missed st in Round 7) two times, 2ch, miss 1 st, 1tr in each of next 5 sts, (5ch, miss 4 sts, 1tr in each of next 5 sts) to final group of 5 sts at end of side, (2ch, miss 1 st, 1tr in missed st in Round 7) two times, 2ch, miss 1 st, repeat from \* three times, ss to first dc, fasten off.

**Round 10 (RS)** Re-join **Yarn A** into corner ch-sp, 5ch (counts as 1 tr and 2 ch), 1tr in same corner ch-sp, \*(2ch, miss 1 st, 1tr in missed st in Round 8) three times, (6ch, miss 5 sts, 1tr in each of next 4 sts) to final group of 4 sts at end of side, 6ch, miss 5 sts, (1tr in next missed st in Round 8, 2ch, miss 1 st) three times\*\*, (1tr, 2ch, 1tr) in corner ch-sp, repeat from \* three times ending

final repeat at \*\*, ss to 3rd ch of beginning 5 ch, fasten off.

**Round 11 (RS)** Join **Yarn E** into corner ch-sp diagonally opposite from where **Yarn A** was joined, 1ch (does not count as st), \*(1dc, 2ch, 1dc) in corner ch-sp, (2ch, miss 1 st, 1tr in missed st in Round 9) three times, 2ch, miss 1 st, 1tr in each of next 5 sts, (5ch, miss 4 sts, 1tr in each of next 5 sts) to final group of 5 sts at end of side, (2ch, miss 1 st, 1tr in missed st in Round 9) three times, 2ch, miss 1 st, repeat from \* three times, ss to first dc, fasten off.

**Round 12 (RS)** Re-join **Yarn A** into corner ch-sp, 5ch (counts as 1 tr and 2 ch), 1tr in same corner ch-sp, \*(2ch, miss 1 st, 1tr in missed st in Round 10) four times, (6ch, miss 4 sts, 1tr in each of next 4 sts) to final group of 4 sts at end of side, 6ch, miss 5 sts, (1tr in next missed st in Round 10, 2ch, miss 1 st) four times\*\*, (1tr, 2ch, 1tr) in corner ch-sp, repeat from \* three times ending final repeat at \*\*, ss to 3rd ch of beginning 5 ch, fasten off.

**Round 13 (RS)** Join **Yarn F** into corner ch-sp diagonally opposite from where **Yarn A** was joined, 1ch (does not count as st), \*(1dc, 2ch, 1dc) in corner ch-sp, (2ch, miss 1 st, 1tr in missed st in Round 11) four times, 2ch, miss 1 st, 1tr in each of next 5 sts, (5ch, miss 4 sts, 1tr in

each of next 5 sts) to final group of 5 sts at end of side, (2ch, miss 1 st, 1tr in missed st in Round 11) four times, 2ch, miss 1 st, repeat from \* three times, ss to first dc, fasten off.

*When working the dc sts into the back loops only make sure the 6-ch strand in Yarn A is also crocheted around and encased. This helps the border to lay flat and minimises curling.*

**Round 14 (RS)** Re-join **Yarn A** into corner ch-sp, 1ch (does not count as st), \*(1dc, 2ch, 1dc) in corner ch-sp, (1dc in blo of next st, 1tr in missed st in Round 12) five times, (1dc in blo of each of next 5 sts, 1tr in each of next 4 sts) to final group of 4 sts at end of side, 1dc in blo of each of next 5 sts, (1tr in next missed st in Round 12, 1dc in blo of next st) five times, repeat from \* three times, ss to first dc, turn. [171 sts along top and bottom and 198 sts along the side edges with 4 x corner 2-ch-sps]

*The final round is made with the WS facing to help the border lay flat and not curl inwards*

**Round 15 (WS)** 2ch (counts as first htr), \*1 htr in each st to end of side, 3htr in corner ch-sp, repeat from \* three times, ss to top of first 2 ch, fasten off.

*Thank you for joining us!*



## NOTES

A series of horizontal dotted lines for taking notes.



# ROOMS WITH A VIEW



## KING COLE LTD

Merrie Mills, Union Business Park, Keighley Road, Skipton, BD23 2QR  
Tel: 01756 703670 Website: [kingcole.com](http://kingcole.com) Email: [enquiries@kingcole.com](mailto:enquiries@kingcole.com)

CAL 2023 Pattern: Rooms with a View © Copyright King Cole 2023

This leaflet is protected by copyright. Reproduction in any form (including photocopy) is strictly forbidden. Digital downloads may not be shared. Offenders will be prosecuted.