



5864

double
knit



10th Row: Using A purl.

11th Row: *Using A K3, using B K1, rep from * to last st, **using A K1.**

12th Row: Using A purl.

13th Row: Using A (K4, K2tog) 12 times, K1. 61sts.

14th Row: Using A purl.

Break off A and B.

Using C work in g-st as follows:-

Work 2 rows in g-st.

17th Row: (K3, K2tog) 12 times, K1. 49sts.

Work 3 row in g-st.

21st Row: (K2, K2tog) 12 times, K1. 37sts.

Work 1 row in g-st.

23rd Row: (K1, K2tog) 12 times, K1. 25sts.

24th Row: Knit.

25th Row: (K2tog) 12 times, K1.

13sts.

26th Row: Knit.

Break off yarn, leaving a long strand, thread yarn through rem sts, draw up, fasten off and secure. Using same yarn, join back seam.

STALK

Using 3.25mm needles and C, cast on 295sts.

Cast off as follows:- S1, cast off 30sts (do not use s1) leave st on right hand needle from last cast off st (you will now have 2sts on right hand needle), *cast off 10sts (do not use st left on right hand needle from previous cast off sts), leave st from last cast off st on needle (3sts on right hand needle), cast off 30sts (do not use st from previous cast off), leave st from last cast off st on needle*, (4sts on needle) rep from * to * 5 times more, cast off 10sts, leaving st used for cast off on right hand needle. 15sts on needle.

Fasten off. Thread yarn through rem 15sts on needle and pull tight to gather up petals. Secure and attach Stalk to top of Hat.

See ball band for pressing and care instructions.

WATERMELON HAT

BRIM

Using 3.25mm needles and A, cast on 120sts, commencing with a knit row and working in st-st (throughout) work 2 rows.

3rd Row (rs): (K7, K1FB) 15 times. 135sts.

Work 7 rows in st-st.

11th Row: (K8, K1FB) 15 times. 150sts.

Work 4 rows in st-st.

16th Row: Fold Line. Knit.

Beg with a K row, work 4 rows in st-st.

21st Row (rs): (K8, K2tog) 15 times. 135sts.

Work 7 rows in st-st.

29th Row: (K7, K2tog) 15 times. 120sts.

Work 3 rows in st-st.

Place a **marker** at each end of last row to identify end of Brim and start of Head.

Break off A.

Change to 4mm needles and B, work 4 rows in st-st.

Break off B.

Using C, work 24 rows in st-st.

Shape Crown.

1st Row (rs): (K6, K2tog) 15 times. 105sts.

Work 3 rows in st-st.

5th Row: (K5, K2tog) 15 times. 90sts.

Work 3 rows in st-st.

9th Row: (K4, K2tog) 15 times. 75sts.

Work 1 row in st-st.

11th Row: (K3, K2tog) 15 times. 60sts.

Work 1 row in st-st.

13th Row: (K2, K2tog) 15 times. 45sts.

Work 1 row in st-st.

15th Row: (K1, K2tog) 15 times. 30sts.

Work 1 row in st-st.

17th Row: (K2tog) 15 times. 15sts.

Break off yarn, leaving a long strand, thread yarn through rem sts, draw up, fasten off and secure. Using same yarn, join back seam.

Using D, swiss darn seeds randomly over Hat.

Fold Lower Brim in half onto ws and slip stitch **loosely** in position.

See ball band for pressing and care instructions.

ST-ST STRIPED HAT

Using 3.25mm needles and A, cast on 120sts, commencing with a knit row and working in st-st (throughout) work 2 rows.

3rd Row (rs): (K7, K1FB) 15 times. 135sts.

Work 7 rows in st-st.

11th Row: (K8, K1FB) 15 times. 150sts.

Work 4 rows in st-st.

16th Row: Fold Line. Knit.

Beg with a K row, work 4 rows in st-st.

21st Row (rs): (K8, K2tog) 15 times. 135sts.

Work 7 rows in st-st.

29th Row: (K7, K2tog) 15 times. 120sts.

Work 3 rows in st-st.

Place a **marker** at each end of last row to identify end of Brim and start of Head.

Break off A.

Change to 4mm needles and B, work 4 rows in st-st.

Using C work 4 rows in st-st.

Using D work 4 rows in st-st.

Change to A and proceed as follows:-

Work 16 rows in st-st.

Shape Crown.

1st Row (rs): (K6, K2tog) 15 times. 105sts.

Work 3 rows in st-st.

5th Row: (K5, K2tog) 15 times. 90sts.

Work 3 rows in st-st.

9th Row: (K4, K2tog) 15 times. 75sts.

Work 1 row in st-st.

11th Row: (K3, K2tog) 15 times. 60sts.

Work 1 row in st-st.

13th Row: (K2, K2tog) 15 times. 45sts.

Work 1 row in st-st.

15th Row: (K1, K2tog) 15 times. 30sts.

Work 1 row in st-st.

17th Row: (K2tog) 15 times. 15sts.

Break off yarn, leaving a long strand, thread yarn through rem sts, draw up, fasten off and secure. Using same yarn, join back seam. Fold Lower Brim in half onto **ws** and slip stitch **loosely** in position.

See ball band for pressing and care instructions.

PINEAPPLE HAT

Using 3.25mm needles and A, cast on 120sts, commencing with a knit row and working in st-st work 2 rows.

3rd Row (rs): (K7, K1FB) 15 times. 135sts.

Work 7 rows in st-st.

11th Row: (K8, K1FB) 15 times. 150sts.

Work 4 rows in st-st.

16th Row: Fold Line. Knit.

Beg with a K row, work 4 rows in st-st.

21st Row (rs): (K8, K2tog) 15 times. 135sts.

Work 7 rows in st-st.

29th Row: (K7, K2tog) 15 times. 120sts.

Work 3 rows in st-st.

Place a **marker** at each end of last row to identify end of Brim and start of Head.

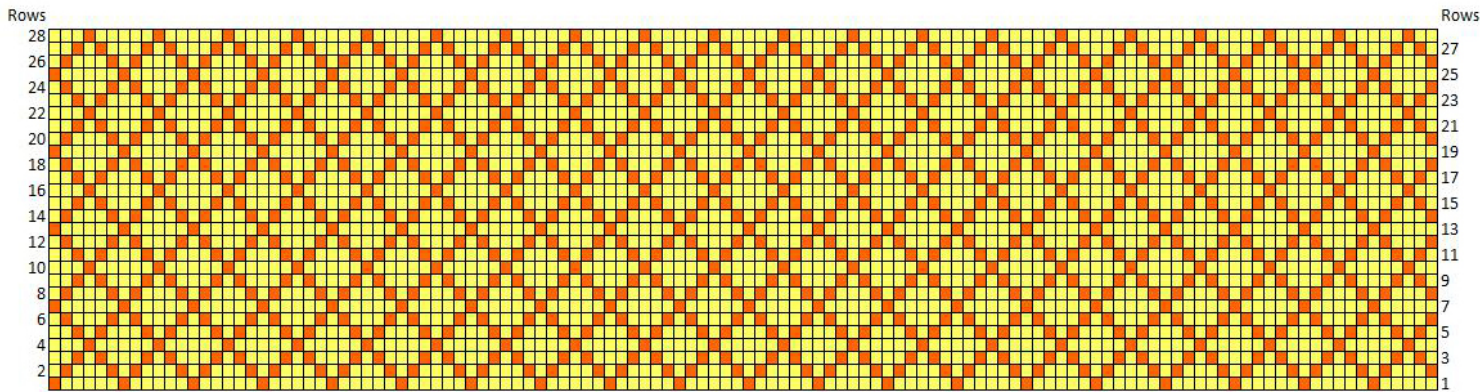
Change to 4mm needles and work from 1st to 28th row of Chart reading from right to left then left to right, odd numbered rows are knit, even numbered rows are purl.

Break off B, using A only proceed as follows:-

Shape Crown.

1st Row (rs): (K6, K2tog) 15 times. 105sts.

Work 3 rows in st-st.



5th Row: (K5, K2tog) 15 times. 90sts.
Work 3 rows in st-st.

9th Row: (K4, K2tog) 15 times. 75sts.
Work 1 row in st-st.

11th Row: (K3, K2tog) 15 times.
60sts.
Work 1 row in st-st.

13th Row: (K2, K2tog) 15 times.
45sts.
Work 1 row in st-st.

15th Row: (K1, K2tog) 15 times.
30sts.
Work 1 row in st-st.

17th Row: (K2tog) 15 times. 15sts.
Break off yarn, leaving a long strand,
thread yarn through rem sts, draw
up, fasten off and secure. Using same
yarn, join back seam. Fold Lower
Brim in half onto **ws** and slip stitch
loosely in position.

PINEAPPLE TOP

Using 3.25mm needles and C, cast
on 55sts and knit 2 rows.

Shape Leaves.

Large Leaf.

****1st Row (rs):** S1, K6, turn, leave
rem 48sts on needle.

Working on these 7sts **only** proceed
as follows:-

2nd Row: S1, K6.

Rep last row 18 times more.

21st Row: K2tog, K3, K2tog. 5sts.

22nd Row: S1, K4.

23rd Row: K2tog, K1, K2tog.

24th Row: S1, K2.

25th Row: S1, K2tog, pssso.

Fasten off.

With **rs** facing, rejoin yarn to rem
48sts and proceed as follows:-

Small Leaf.

1st Row (rs): S1, K4, turn, leave rem
43sts on needle.

Working on these 5sts **only** proceed
as follows:-

2nd Row: S1, K4.

Rep last row 8 times more.

11th Row: K2tog, K1, K2tog.

12th Row: S1, K2.

13th Row: S1, K2tog, pssso. Fasten
off.**

Rep from ** to ** 3 times more. 7sts.

Work 1st to 25th row once more for
Large Leaf.

Using running stitch gather up cast
on edge and pull

together and secure. Attach
leaves to top of Hat and

secure. See ball band

for pressing and
care instructions.



For every King Cole pattern you
buy, a donation will be made to
the Pink Ribbon Foundation.

MEASUREMENTS

To Fit average Sized Head

MATERIALS REQUIRED

Garner Stitch Striped Hat

2 x 50g balls of King Cole Big Value DK shade A 4053 Black
1 x 50g ball of King Cole Big Value DK shade B 4046 Jade
1 x 50g ball of King Cole Big Value DK shade C 4034 Fuschia
1 x 50g ball of King Cole Big Value DK shade D 4028 Orange

Strawberry Hat

2 x 50g balls of King Cole Big Value DK shade A 4029 Red
1 x 50g ball of King Cole Big Value DK shade B 4027 Yellow
1 x 50g ball of King Cole Big Value DK shade C 4049 Lime

Watermelon Hat

1 x 50g ball of King Cole Big Value DK shade A 4050 Emerald
1 x 50g ball of King Cole Big Value DK shade B 4020 White
1 x 50g ball of King Cole Big Value DK shade C 4033 Pink
1 x 50g ball of King Cole Big Value DK shade D 4053 Black

Stocking Stitch Striped Hat

1 x 50g ball of King Cole Big Value DK shade A 4056 Orchid
1 x 50g ball of King Cole Big Value DK shade B 4044 Turquoise
1 x 50g ball of King Cole Big Value DK shade C 4027 Yellow
1 x 50g ball of King Cole Big Value DK shade D 4049 Lime

Pineapple Hat

2 x 50g balls of King Cole Big Value DK shade A 4090 Buttercup
1 x 50g ball of King Cole Big Value DK shade B 4028 Orange
1 x 50g ball of King Cole Big Value DK shade C 4050 Emerald

Yarn amounts may vary when using other King Cole yarns.

NEEDLES

1 Pair 4mm (UK8 – USA6) knitting needles.
1 Pair 3.75mm (UK9 – USA5) knitting
needles.
1 Pair 3.25mm (UK10 – USA3) knitting
needles.
Stitch holders.

NOTES

The yarn amounts stated are based on
average requirements and are therefore
approximate. After casting off one stitch will
remain on the right hand needle which is
not included in the instructions that follow.
Owing to photography and printing
restrictions the colour reproduction is
matched as closely as possible to the yarn.

IMPORTANT

To ensure accuracy only **KING COLE DK
YARNS** are suitable. No responsibility will
be taken for the result of using any other
yarn.

Leaflet 5864v1

© This leaflet is protected by copyright.
Reproduction in any form (including
photocopy) is strictly forbidden.
Digital downloads may not be shared.
Offenders will be prosecuted.

KING COLE LTD

Merrie Mills, Snaygill Industrial Estate, Keighley Road, Skipton, BD23 2QR
Tel: 01756 703670 Website: kingcole.com Email: enquiries@kingcole.com



Printed in England

