

Introducing our latest knit along, the fresh and fun

Beach Hut Blanket!

A nostalgic throwback to those glorious summer days by the seaside, when a 99 cost as much and jelly shoes weren't a questionable footwear choice. This lightweight blanket captures the essence of British summer no matter where you holiday. Whether it be by the beach huts in Abersoch or in Cornwall with the waves lapping at your feet, 'A Typical British Summer'

evokes happy memories for all.

Over the next several weeks we will be revealing step-by-step instructions to make this delightful blanket. Find updates on social media and our website. We will be using seven different colours of King Cole Big Value DK 50g available from all good yarn retailers. Amounts are approximate and your results may vary.



Difficulty:
This project is suitable for the adventurous beginner onwards. It assumes that you can cast on and off and work knit and purl stitches. There are both written instructions and charts to help you along the way.

ENTIRE SHOPPING LIST:

**Knitting Needles at
3.25mm (UK8, USA 6)
& 4mm (UK10, USA 3)**

**King Cole Big Value DK 50g
in the following colours:**

6 x Fuchsia 4034
5 x Yellow 4027
11 x White 4020
1 x Grey 4052
5 x Turquoise 4044
3 x Saxe 4040
1 x Royal 4041



Alternatively, our Cottonsoft 100g is a good substitute yarn. Cottonsoft French Navy is used in place of Big Value DK 50g Grey and Royal.

*Total Shopping list for
Cottonsoft DK 100g:*
8 x White 710
5 x Hot Pink 1848
4 x Azure 3366
1 x French Navy 741
4 x Buttercup 1600
2 x Saxe 718

Size:

*Individual squares
25cm x 25cm (10" x 10")
(excluding Beach Huts)*

*Finished Blanket
150cm x 150cm (60" x 60")*

Additional equipment needed:

Locking stitch markers
Sharp scissors
Tape measure or ruler
Sharp darning needle
Toy stuffing
Sewing needle and thread

Tips for success:

Keep all your yarn labelled as when working in artificial light it can be easy to mistake Saxe with Turquoise.

Sew in your ends after each square, taking care to keep the back of the pieces nice and tidy. Use a sharp darning needle and weave in each end well to prevent all your hard work from coming apart over the years.

Mark off the blocks on the block layout diagram as you make them to keep track of where you are.

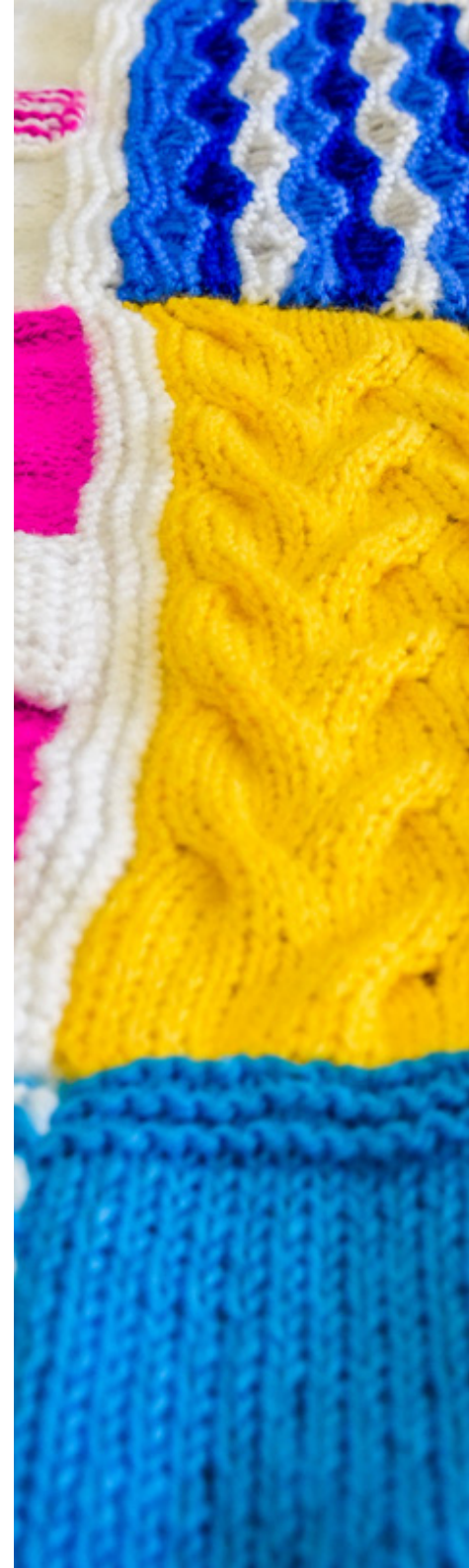
[▶ Find our step-by-step tutorials on youtube.](#)

Join us next week for the first step
in crafting this lovely blanket.



Abbreviations

Beg	begin(ning)
C6B	Slip next 3 sts onto cable needle and hold to back of work, k3, k3 from cable needle.
C6F	Slip next 3 sts onto cable needle and hold to front of work, k3, k3 from cable needle.
C2B	Slip next stitch onto cable needle and hold to back of work, k1, k1 from cable needle.
C2F	Slip next stitch onto cable needle and hold to front of work, k1, k1 from cable needle.
Cm (s)	centimetre(s)
Dec	decrease
In (s)	inch(es)
Inc	increase
K2tog	knit next two sts together as one. (One st decreased)
Kfb	knit into front and back of next st. (One st increased)
Knit (K)	knit
M1	make one, pick up loop lying between last st just worked and next st, and K into back of loop. (One st increased)
Mm	millimetre(s)
P2tog	purl next two sts together as one. (One st decreased)
P2togtbl	purl next two sts together as one, working through back loops of each st. (One st decreased)
Psso	pass slipped st over last stitch worked. (One st decreased)
Purl (P)	purl
Rem	remain(ing)
Rep	repeat
Sl1	slip next st purlwise without working it
Ssk	slip one knitwise, slip one knitwise, knit these two slipped sts together. (One st decreased)
St(s)	stitch(es)
St st	stocking stitch
Yo	yarn over



Handy Tips

WORKING FROM CHARTS

When working from a chart you work all the odd numbered rows from right to left, and all the even numbered rows from left to right. It is useful to use a ruler laid across the chart to ensure you are working across the correct row. Tick off each row as you have worked it. Always Check the Tension.

TENSION

I know you are wondering why is tension important, it is a blanket, it does not have to fit. Well, correct tension will prevent you from running out of yarn (or having lots of leftover yarn). Working to the stated tension will produce a nice fabric with drape but still with enough structure to hold its shape.

For those of you who have

worked with King Cole Big Value DK before, and are confident of your tension, you could cast on a Beach Hut and use this as your swatch.

Alternatively, to make a tension square, cast on 30 sts, and work in stocking stitch (one row knit and one row purl) for 40 rows. Cast off and count how many stitches and rows you have over 10cm (4in). If you have too few stitches, use

a larger needle and knit swatch again. Too many stitches, use a smaller needle. Ordinarily you would block your swatch before measuring, but as some of the blocks require you to measure them as you work, (unblocked) this will help keep the squares a more consistent size.

Keep your swatches to one side, should you need additional yarn then you can use them.



Week One - Shopping List

This week we will be crafting the very first squares for our Beach Hut summery blanket. To do this, we will need...

King Cole Big Value DK 50g in the following colours:

4 x White 4020
3 x Fuchsia 4034
3 x Turquoise 4044
1 x Grey 4052



Week One - Pattern

BEACH HUT B - MAKE 2

Important Notes:

The door is knitted as a separate piece and sewn on at the end. It uses 2 rows of knitting for each stripe shown on the Beach Hut Chart. The windows can be worked in 3 ways. You can use the intarsia method following either the written instructions below or the Beach Hut B Chart, or you can knit them as a separate piece and sew them on using the chart for guidance, or if you prefer, add them at the end using duplicate stitch (swiss darning), again using the chart for guidance. I used this method as I liked the added dimension that it gives to the project.

Yarn:

2x White 4020
1x Fuchsia 4034
1x Turquoise 4044
1x Grey 4052

Block measures:

25cm x 38cm (10in x 15in)

Needles:

Straight 4mm (UK8, US6)
Straight 3.25mm (UK10, US3)

Tension:

DK yarn: 22 sts and 28 rows
to 10cm (4in) over st-st using
4mm needles



WRITTEN INSTRUCTIONS

Working windows separately

Using 4mm needles and White yarn, cast on 57st.

Rows 1(RS)-6: Knit (g-st).

Row 7: Knit.

Row 8: Purl.

Repeat rows 7 & 8 (st-st) until piece measures 25cm (10in) from cast-on edge ending after a WS row.

DO NOT CAST OFF.

ROOF

Change to Turquoise yarn (and back to g-st)

Row 1: Ssk, knit to last 2 sts, k2tog. 55 sts

Row 2: Knit.

Repeat rows 1 & 2 until 5 sts rem.

Next row (WS): Sl1, ssk, pssso, k2tog, pass last stitch over.

One st remains.

Cut yarn and pull through rem stitch to finish.

WINDOWS – Knitted separately & sewn in place

Using 4mm needles and Grey yarn, cast on 7 sts.

Row 1: Knit.

Row 2: Purl.

Repeat these 2 rows in st-st five times in total.

Row 11: Knit.

Cast off leaving a reasonable length to sew window in place.

Alternatively embroider windows using the duplicate stitch (swiss darning), using chart as a guide.

DOOR

Instructions as given on following page.



Week One - Pattern

BEACH HUT B - CONT

WRITTEN INSTRUCTIONS – Intarsia method

Using 4mm needles and White yarn, cast on 57 sts.
Rows 1(RS)-6: Knit.
Row 7: Knit.
Row 8: Purl.
Rows 9-26: Beg with a knit row, work in st st as set.
Row 27: K8 White, k7 Grey, k27 White, k7 Grey, k8 White.
Row 28: P8 White, p7 Grey, p27 White, p7 Grey, p8 White.
Rows 29-37: Repeat rows 27 & 28 four times, then row 27 once.

Using White yarn only

Repeat rows 7 & 8 (working in stocking stitch, starting with row 8) until piece measures 25cm (10in) from cast-on edge ending after a WS row. **DO NOT CAST OFF.**

ROOF

Change to Turquoise yarn
Row 1: Ssk, knit to last 2 sts, k2tog. 55 sts
Row 2: Knit.
Repeat rows 1 & 2 until 5 sts rem.
Next row (WS): Sl1, ssk, pss0, k2tog, pass last stitch over.
One st remains.
Cut yarn and pull through rem stitch to finish.

DOOR

Follow instructions as given in pink box.

DOOR

Using 3.25mm needles and White yarn, cast on 27 sts.
Rows 1(RS)-2: Knit.
Change to Fuchsia yarn
Rows 3-4: Knit.
Repeat rows 1-4 five times in total.
Change to White yarn
Rows 21-22: Knit.
Cast off purlwise.

Darn in ends. Using chart as a guide sew door into position.
Embroider on windows if chosen method. Block.



Week One - Pattern

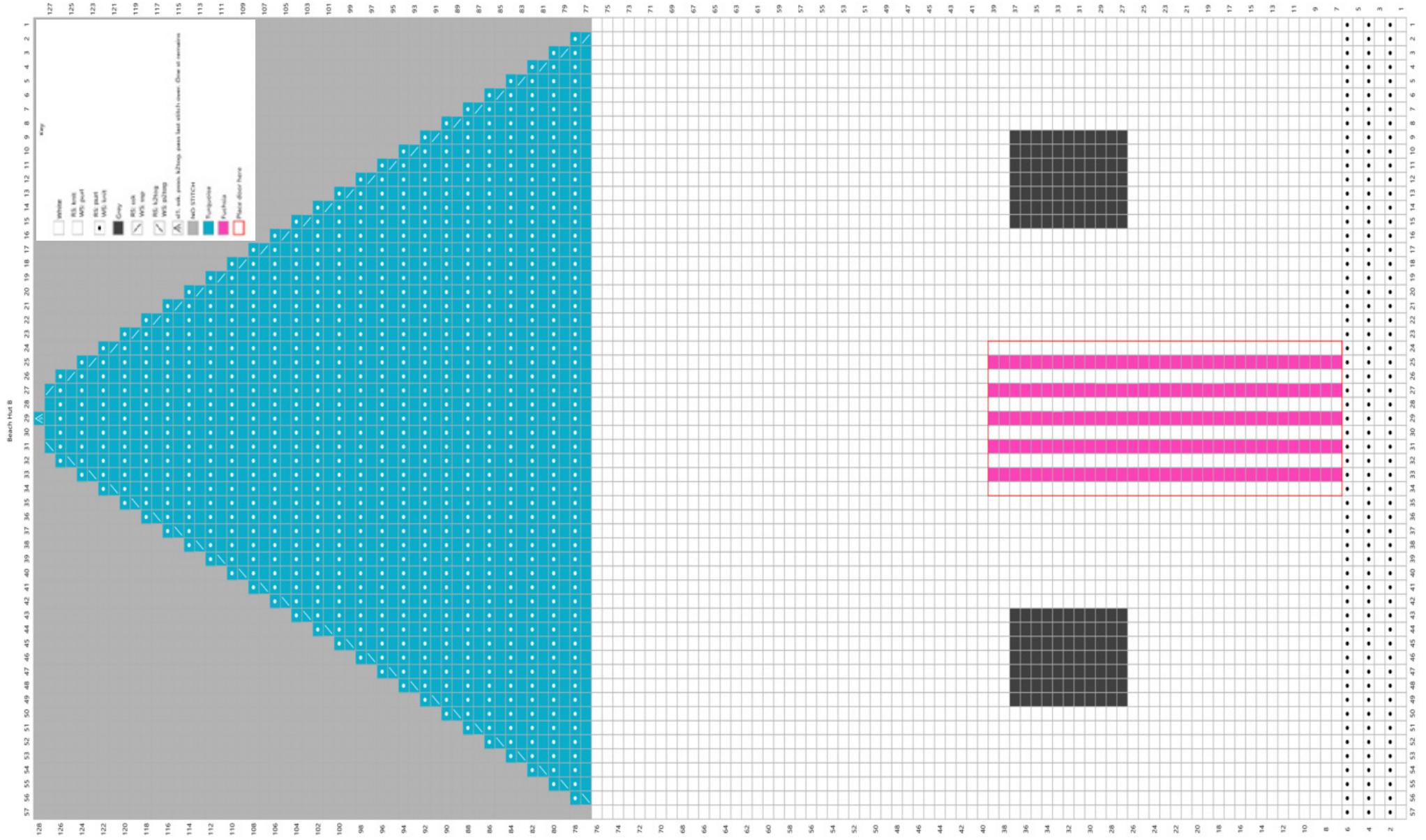
BEACH HUT B - CONT

The door is knitted separately, do not try to follow the chart to create the door. It is shown here only for positioning.

CHARTED INSTRUCTIONS

Using 4mm needles and White yarn, cast on 57 sts.
Work from chart to end (remember the door is added afterwards, so work this section of the chart in White stocking stitch).

Cut yarn and pull through rem st to fasten off. Darn in ends. Make door as per written instructions above. Using chart as a guide, sew door into position. Embroider on windows if chosen method. Block.



Week One - Pattern

BEACH HUT D - MAKE 2

Important Notes:

The door is knitted as a separate piece and sewn on at the end. It uses 2 rows of knitting for each stripe shown on the Beach Hut Chart. The windows can be worked in 3 ways. You can use the intarsia method following either the written instructions below or the Beach Hut D Chart, or you can knit them as a separate piece and sew them on using the chart for guidance, or if you prefer, add them at the end using duplicate stitch (swiss darning), again using the chart for guidance. I used this method as I liked the added dimension that it gives to the project.

Yarn:

1 x White 4020
2 x Fuchsia 4034
1 x Turquoise 4044
1 x Grey 4052

Block measures:

25cm x 38cm (10in x 15in)

Needles:

Straight 4mm (UK8, US6)
Straight 3.25mm (UK10, US3)

Tension:

DK yarn: 22 sts and 28 rows
to 10cm (4in) over st-st using
4mm needles

WRITTEN INSTRUCTIONS

Working windows separately

Using 4mm needles and Fuchsia yarn, cast on 57 sts.

Rows 1(RS)-6: Knit (g-st).

Row 7: Knit.

Row 8: Purl.

Repeat rows 7 & 8 (st-st) until piece measures 25cm (10in) from cast-on edge ending after a WS row.

DO NOT CAST OFF.

ROOF

Change to White yarn (and back to g-st)

Row 1: Ssk, knit to last 2 sts, k2tog. 55 sts

Row 2: Knit.

Repeat rows 1 & 2 until 5 sts rem.

Next row (WS): Sl1, ssk, pssso, k2tog, pass last stitch over. One st remains.

Cut yarn and pull through rem stitch to finish.

WINDOWS – Knitted separately & sewn in place

Using 4mm needles and Grey yarn, cast on 7 sts.

Row 1: Knit.

Row 2: Purl.

Repeat these 2 rows in st-st five times in total.

Row 11: Knit.

Cast off leaving a reasonable length to sew window in place.

Alternatively embroider windows using the duplicate stitch (swiss darning), using chart as a guide.

DOOR

Instructions as given on following page.



Week One - Pattern

BEACH HUT D - CONT

WRITTEN INSTRUCTIONS – Intarsia Method

Using 4mm needles and Fuchsia yarn, cast on 57 sts.

Rows 1(RS)-6: Knit.

Row 7: Knit.

Row 8: Purl.

Rows 9-26: Beg with a knit row, work in st st as set.

Row 27: K8 Fuchsia, k7 Grey, k27 Fuchsia, k7 Grey, k8 Fuchsia.

Row 28: P8 Fuchsia, p7 Grey, p27 Fuchsia, p7 Grey, p8 Fuchsia.

Rows 29-37: Repeat rows 27 & 28 four times, then row 27 once.

Using Fuchsia yarn only

Repeat rows 7 & 8 (working in stocking stitch, starting with row 8) until piece measures 25cm (10in) from cast-on edge ending after a WS row.

ROOF

Change to White yarn

Row 1: Ssk, knit to last 2 sts, k2tog. 55 sts

Row 2: Knit.

Repeat rows 1 & 2 until 5 sts rem.

Next row (WS): Sl1, ssk, pssso, k2tog, pass last stitch over. One st remains.

Cut yarn and pull through rem stitch to finish.

DOOR

Follow instructions as given in pink box.

DOOR

Using 3.25mm needles and White yarn, cast on 27 sts.

Rows 1(RS)-2: Knit.

Change to Turquoise yarn

Rows 3-4: Knit.

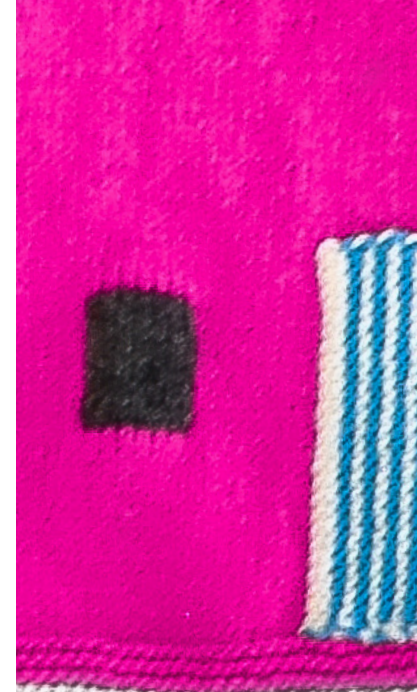
Repeat rows 1-4 five times in total.

Change to White yarn

Rows 21-22: Knit.

Cast off purlwise.

Darn in ends. Using chart as a guide sew door into position. Embroider on windows if chosen method. Block.



Week One - Pattern

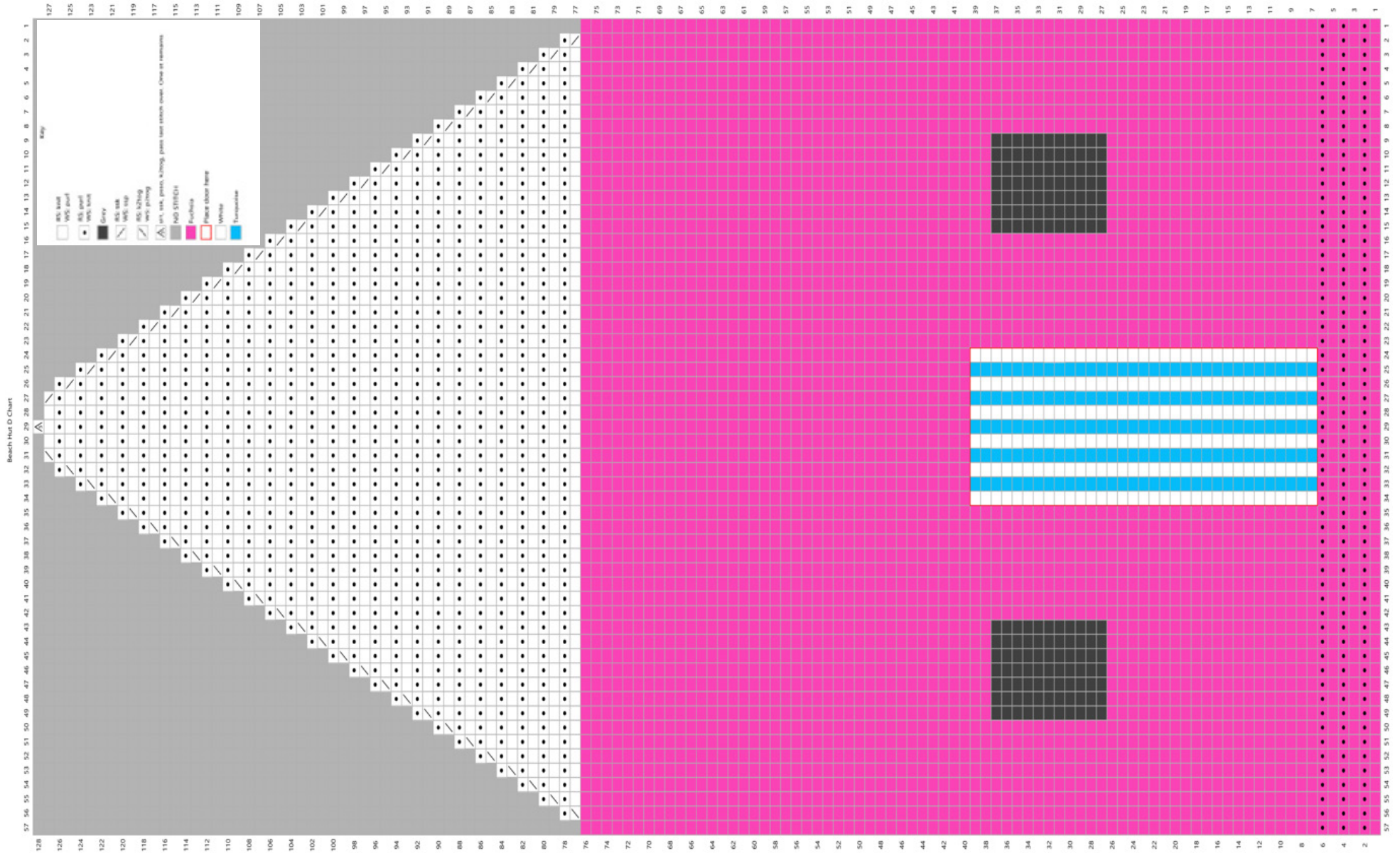
BEACH HUT D - CONT

The door is knitted separately, do not try to follow the chart to create the door. It is shown here only for positioning.

CHARTED INSTRUCTIONS

Using 4mm needles and Fuchsia yarn, cast on 57 sts.
Work from chart to end (remember the door is added afterwards, so work this section of the chart in Fuchsia stocking stitch).

Cut yarn and pull through rem st to fasten off. Darn in ends. Make door as per written instructions above. Using chart as a guide sew door into position. Embroider on windows if chosen method. Block.



Week One - Pattern

BEACH HUT E - MAKE 2

Important Notes:

The door is knitted as a separate piece and sewn on at the end. It uses 2 rows of knitting for each stripe shown on the Beach Hut Chart. The windows can be worked in 3 ways. You can use the intarsia method following either the written instructions below or the Beach Hut D Chart, knit them as a separate piece and sew them on using the chart for guidance, or if you prefer, add them at the end using duplicate stitch (swiss darning), again using the chart for guidance. I used this method as I liked the added dimension that it gives to the project.

Yarn:

1 x White 4020
1 x Fuchsia 4034
2 x Turquoise 4044
1 x Grey 4052

Block measures:

25cm x 38cm (10in x 15in)

Needles:

Straight 4mm (UK8, US6)
Straight 3.25mm (UK10, US3)

Tension:

DK yarn: 22 sts and 28 rows
to 10cm (4in) over st-st using
4mm needles

WRITTEN INSTRUCTIONS

Working windows separately

Using 4mm needles and Turquoise yarn, cast on 57 sts.

Rows 1(RS)-6: Knit (g-st).

Row 7: Knit.

Row 8: Purl.

Repeat rows 7 & 8 (st-st) until piece measures 25cm (10in) from cast-on edge ending after a WS row.

DO NOT CAST OFF.

ROOF

Change to White yarn (and back to g-st)

Row 1: Ssk, knit to last 2 sts, k2tog. 55 sts

Row 2: Knit.

Repeat rows 1 & 2 until 5 sts rem.

Next row (WS): Sl1, ssk, pssso, k2tog, pass last stitch over.
One st remains.

Cut yarn and pull through rem stitch to finish.

WINDOWS – Knitted separately & sewn in place

Using 4mm needles and Grey yarn, cast on 7 sts.

Row 1: Knit.

Row 2: Purl.

Repeat these 2 rows in st-st five times in total.

Row 11: Knit.

Cast off leaving a reasonable length to sew window in place.

Alternatively embroider windows using the duplicate stitch (swiss darning), using chart as a guide.

DOOR

Instructions as given on following page.



Week One - Pattern

BEACH HUT E - CONT

WRITTEN INSTRUCTIONS – Intarsia Method

Using 4mm needles and Turquoise yarn, cast on 57 sts.
Rows 1(RS)-6: Knit.

Row 7: Knit.

Row 8: Purl.

Rows 9-26: Beg with a knit row, work in st st as set.

Row 27: K8 Turquoise, k7 Grey, k27 Turquoise, k7 Grey, k8 Turquoise.

Row 28: P8 Turquoise, p7 Grey, p27 Turquoise, p7 Grey, p8 Turquoise.

Rows 29-37: Repeat rows 27 & 28 four times, then row 27 once.

Using Turquoise yarn only

Repeat rows 7 & 8 (working in stocking stitch, starting with row 8) until piece measures 25cm (10in) from cast-on edge ending after a WS row.

ROOF

Change to White yarn

Row 1: Ssk, knit to last 2 sts, k2tog. 55 sts

Row 2: Knit.

Repeat rows 1 & 2 until 5 sts rem.

Next row (WS): Sl1, ssk, pssso, k2tog, pass last stitch over.
One st remains.

Cut yarn and pull through rem stitch to finish.

DOOR

Follow instructions as given in pink box.

DOOR

Using 3.25mm needles and White yarn, cast on 27 sts.

Rows 1-2: Knit.

Change to Fuchsia yarn

Rows 3-4: Knit.

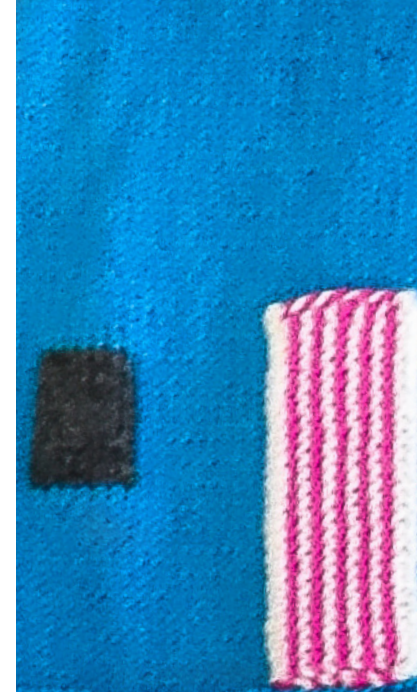
Repeat rows 1-4 five times in total.

Change to White yarn

Rows 21-22: Knit.

Cast off purlwise.

Darn in ends. Using chart as a guide sew door into position.
Embroider on windows if chosen method. Block



Week One - Pattern

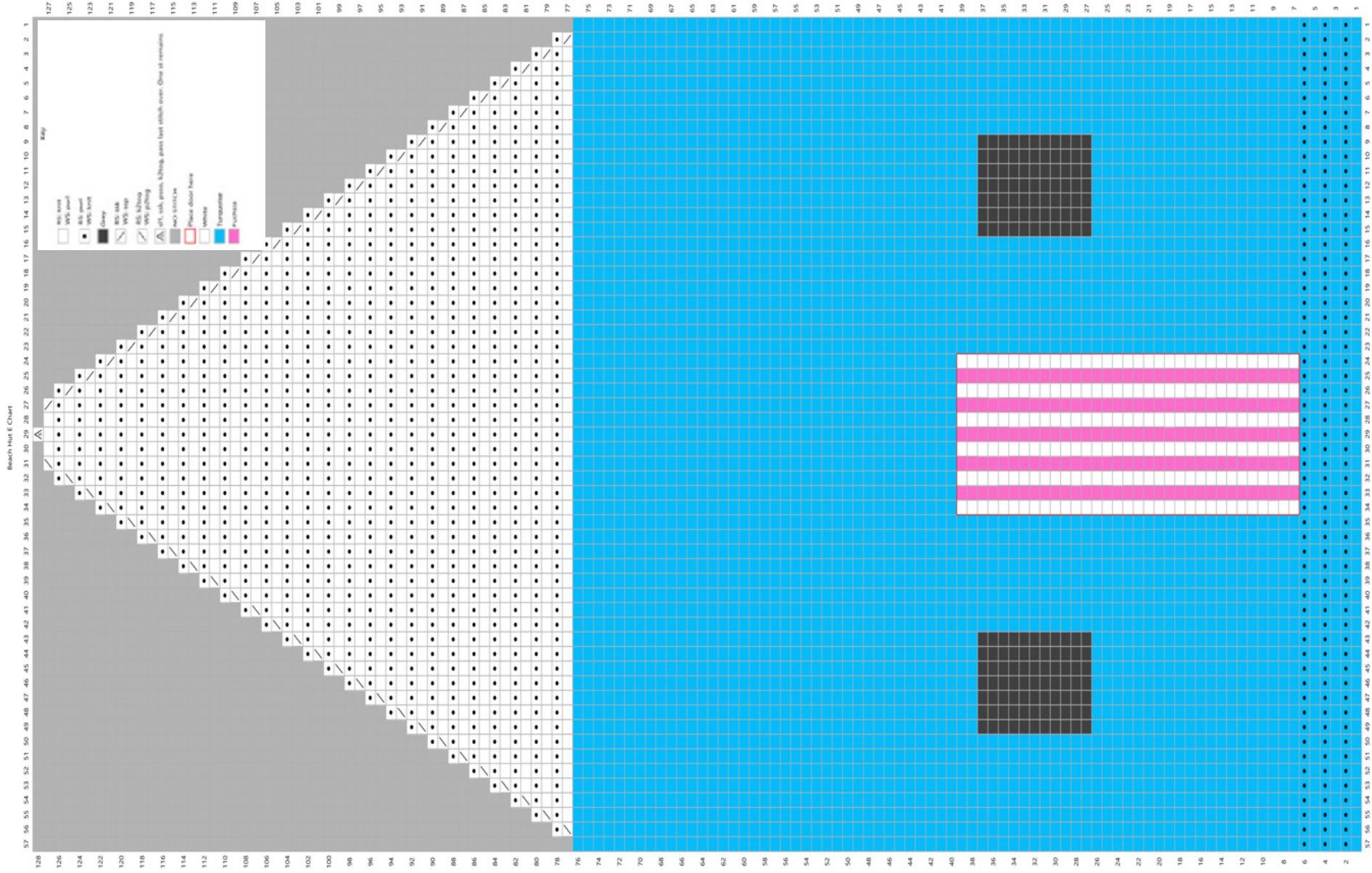
BEACH HUT E - CONT

The door is knitted separately, do not try to follow the chart to create the door. It is shown here only for positioning.

CHARTED INSTRUCTIONS

Using 4mm needles and Turquoise yarn, cast on 57 sts.
Work from chart to end (remember the door is added afterwards, so work this section of the chart in Turquoise stocking stitch).

Cut yarn and pull through rem st to fasten off. Darn in ends. Make door as per written instructions above. Using chart as a guide sew door into position. Embroider on windows if chosen method. Block.



Week Two - Shopping List

We will be crafting only two squares this week - but they are a slightly trickier pattern. To do this, we will need...

King Cole Big Value DK 50g
in the following colours:

2 x Saxe 4040



Week Two - Pattern

ANCHOR SQUARE - MAKE 2

WRITTEN INSTRUCTIONS

Using 4mm needles and Saxe yarn, cast on 57 sts.

Rows 1(RS)-7: Knit.

Row 8: K6, p45, k6.

Row 9: Knit.

Rows 10: K6, p45, k6

Rows 11-12: Repeat rows 9-10 once.

Row 13: K24, p9, k24.

Row 14: K6, p17, k11, p17, k6.

Row 15: K22, p13, k22.

Row 16: K6, p15, k15, p15, k6.

Row 17: K20, p17, k20.

Row 18: K6, p13, k19, p13, k6.

Row 19: K18, p21, k18.

Row 20: K6, p12, k21, p12, k6.

Row 21: K17, p6, k2, p7, k2, p6, k17.

Row 22: K6, p11, (k5, p4) twice, k5, p11, k6.

Row 23: K13, p1, k2, (p5, k5) twice, p5, k2, p1, k13.

Row 24: K6, p7, k1, p1, (k5, p6) twice, k5, p1, k1, p7, k6.

Row 25: K13, p6, k7, p5, k7, p6, k13.

Row 26: K6, p7, (k5, p8) twice, k5, p7, k6.

Row 27: K13, (p5, k8) twice, p5, k13.

Row 28: (K6, p7) twice, k5, (p7, k6) twice.

Row 29: K13, p7, k6, p5, k6, p7, k13.

Row 30: (K6, p7) twice, k5, (p7, k6) twice.

Row 31: K13, (p5, k8) twice, p5, k13.

Row 32: K6, p7, k4, p9, k5, p9, k4, p7, k6.

Row 33: K13, p3, k10, p5, k10, p3, k13.

Row 34: K6, p7, k2, p11, k5, p11, k2, p7, k6.

Row 35: K13, p1, k12, p5, k12, p1, k13.

Row 36: K6, p20, k5, p20, k6.

Row 37: K26, p5, k26.

Rows 38 - 43: Repeat rows 36 - 37 three times.

Row 44: Repeat row 36.

Row 45: K16, p3, k7, p5, k7, p3, k16.

Row 46: K6, p9, k5, p5, k7, p5, k5, p9, k6.

Row 47: K15, p27, k15.

Row 48: K6, p8, k29, p8, k6.

Row 49: K15, p27, k15.

Row 50: K6, p9, (k5, p6) twice, k5, p9, k6.

Row 51: K16, (p3, k8) twice, p3, k16.

Row 52: K6, p21, k3, p21, k6.

Row 53: K25, p7, k25.

Row 54: K6, p18, k3, p3, k3, p18, k6.

Row 55: K24, p3, k3, p3, k24.

Row 56: K6, p17, k3, p5, k3, p17, k6.

Row 57: K23, p3, k5, p3, k23.

Row 58: K6, p17, k3, p5, k3, p17, k6.

Row 59: K24, p3, k3, p3, k24.

Row 60: K6, p18, k3, p3, k3, p18, k6.

Row 61: K25, p7, k25.

Row 62: K6, p20, k5, p20, k6.

Row 63: K27, p3, k27.

Row 64: K6, p45, k6.

Row 65: Knit.

Rows 66 - 69: Repeat rows 64 - 65 twice.

Rows 70 - 74: Knit.

Cast off loosely.

Important Notes:

There are both written and charted instructions for this square, follow whichever makes your heart happy.

Measure your finished square. If it does not measure 25cm (10in) tall, you will need to rip back and repeat rows 64 & 65 to add length before working the final six knitted rows.

Yarn:

2 x Saxe 4040

Block measures:

25cm wide x 25cm tall
(10in x 10in)

Needles:

Straight 4mm (UK8, US6)

Tension:

DK yarn: 22 sts and 28 rows
to 10cm (4in) over st-st
using 4mm needles



Week Two - Pattern

ANCHOR SQUARE - MAKE 2

CHARTED INSTRUCTIONS

Using 4mm needles and Saxe yarn, cast on 57 sts.
Work from anchor chart to end.
Cast off loosely.

Important Notes:

There are both written and charted instructions for this square, follow whichever makes your heart happy.

Measure your finished square. If it does not measure 25cm (10in) tall, you will need to rip back and repeat rows 64 & 65 to add length before working the final six knitted rows.

Yarn:

2 x Saxe 4040

Block measures:

25cm wide x 25cm tall
(10in x 10in)

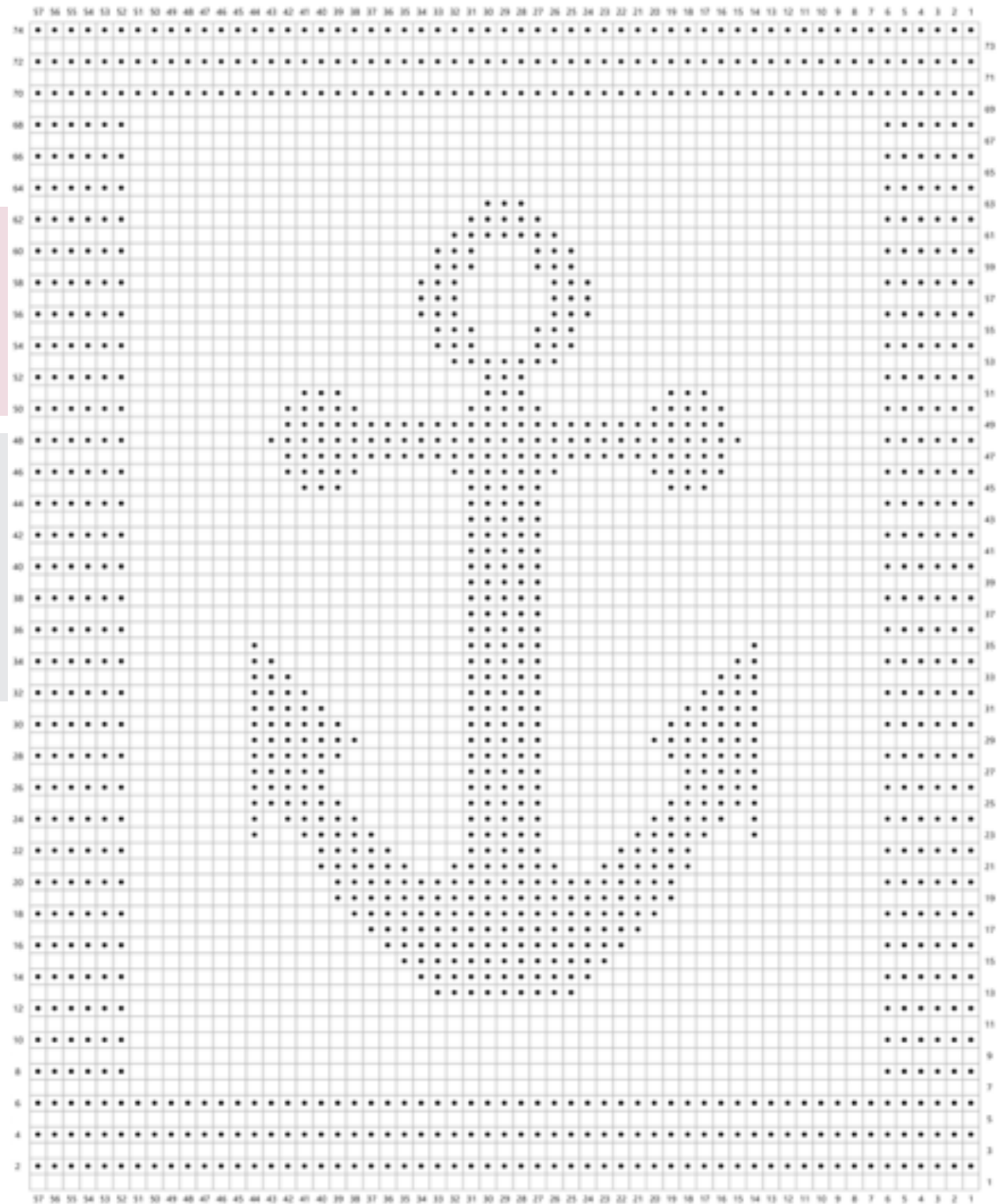
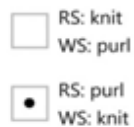
Needles:

Straight 4mm (UK8, US6)

Tension:

DK yarn: 22 sts and 28 rows
to 10cm (4in) over st-st
using 4mm needles

Key



Week Three - Shopping List

We will be crafting the two fantastic three-dimensional Sunshine Squares this week! To do this, we will need...

King Cole Big Value DK 50g in the following colours:

2 x White 4020

1 x Yellow 4027



Week Three - Pattern

SUNSHINE SQUARE - MAKE 2

Yarn:

2x White 4020

1x Yellow 4027

Block measures:

25cm wide x 25cm tall
(10in x 10in)

Needles:

Straight 4mm (UK8, US6)
Straight 3.25mm (UK10, US3)

Also needed:

Toy stuffing
Yellow sewing thread and
needle (optional)

SQUARE:

Using 4mm needles and White yarn, cast on 57 sts.

Rows 1(RS)-6: Knit.

Row 7: Knit.

Row 8: K6, p45, K6.

Repeat rows 7 & 8 until piece measures 23cm (9in) from cast-on edge.

Repeat rows 1-6 once more.

Cast off loosely.

RAYS: (make five pieces)

*Using 3.25mm needles and Yellow yarn, cast on 2 sts.

Row 1: (RS) K1, inc in next st by knitting into front and back of it. 3 sts

Row 2: (WS) Sl1, purl to end.

Row 3: Sl1, m1, knit to last st, m1, k1. 5 sts

Row 4: Sl1, purl to end. Repeat rows 3 & 4 until you have 13 sts.

Row 15: Sl1, m1, knit to end. 14 sts

Row 16: Sl1, purl to end. Cut yarn and slide onto spare needle or st holder.**

Make four more Rays as above working from * to **

With RS facing slip all Rays onto one needle. 70 sts

SUN:

Row 1 (RS): p13, p2tog, (p12, p2tog) 3 times, p13. (This creates a ridge on the rs of the work). 66 sts

Row 2 and all even numbered rows (WS) to row 16: Purl.

Row 3: K2, (k8, k2tog) 6 times, k4. 60 sts

Row 5: K1, (k7, k2tog) 6 times, k5. 54 sts

Row 7: K2, (k6, k2tog) 6 times, k4. 48 sts

Row 9: (K5, k2tog) 6 times, k6. 42 sts

Row 11: K1, (k4, k2tog) 6

times, k5. 36 sts

Row 13: K2, (k3, k2tog) 6 times, k4. 30 sts

Row 15: K3, (k2, k2tog) 6 times, k3. 24 sts

Row 17: K2, (k1, k2tog) 6 times, k4. 18 sts

Row 18: (P2tog) 9 times. 9 sts

Row 19: (K2tog) 4 times, k1. 5 sts.

Cut yarn, and thread through all 5 sts and pull up tight.

TO MAKE UP:

Carefully sew side seam on Sun. Darn in ends and pin sun to centre of Square, stuffing the middle circle as you pin. Once happy sew Sun and Rays to Square taking care to keep the back of the Block tidy. Tip: you may find it tidier to use yellow sewing thread to sew the pieces on.

Tension:

DK yarn: 22 sts and 28 rows to 10cm (4in) over st-st using 4mm needles

Important Notes:

When making the sun, firstly five Rays are knitted and left on a spare needle, once these are complete, you purl across all five Rays to join before working the Sun.

Week Four - Shopping List

This week we will be knitting the two wavy Sand Ripple Squares. To do this, we will need...

King Cole Big Value DK 50g
in the following colours:

3 x Yellow 4027

This week we will also need a **Cable Needle** so in case you haven't got one already, now's your chance!



Week Four - Pattern

SAND RIPPLE SQUARE - MAKE 2

WRITTEN INSTRUCTIONS

Using 4mm needles and Yellow, cast on 64 sts.

Row 1(RS): Knit.

Row 2: Purl.

Repeat rows 1 & 2 once more.

RIPPLE PATTERN

Row 1: Knit.

Row 2: Purl.

Row 3: Knit.

Row 4: Purl.

Row 5: K2, (C6B, k6) five times, k2.

Row 6: Purl.

Row 7: Knit.

Row 8: Purl.

Row 9: Knit.

Row 10: Purl.

Row 11: K2, (k6, C6F) five times, k2.

Row 12: Purl.

Repeat rows 1-12 six times in total.

Row 73: Knit.

Row 74: Purl.

Repeat rows 73 & 74 until piece measures 25cm (10in) from cast-on edge.

Cast off loosely.

Special Abbreviations:

C6B Slip next 3 sts onto cable needle and hold to back of work, k3, k3 from cable needle.

C6F Slip next 3 sts onto cable needle and hold to front of work, k3, k3 from cable needle.

Notes:

[TUTORIAL FOR CABLING HERE](#)

There are both written and charted instructions for this square, follow which ever makes your heart happy.

Yarn:

3x Yellow 4027

Block measures:

25cm wide x 25cm tall
(10in x 10in)

Needles:

Straight 4mm (UK8, US6)
Cable Needle

Tension:

DK yarn: 22 sts and 28 rows to
10cm (4in) over st-st using 4mm
needles



Week Four - Pattern

SAND RIPPLE SQUARE - MAKE 2

Using 4mm needles and Yellow, cast on 64 sts.
Row 1: Knit.
Row 2: Purl.
Repeat rows 1 & 2 once more.
Commence working from Chart.
Work rows 1-12 from chart 6 times in total.
Row 73: Knit.
Row 74: Purl.
Repeat rows 73 & 74 until piece measures 25cm (10in) from cast-on edge
Cast off loosely.

Special Abbreviations:
C6B Slip next 3 sts onto cable needle and hold to back of work, k3, k3 from cable needle.
C6F Slip next 3 sts onto cable needle and hold to front of work, k3, k3 from cable needle.

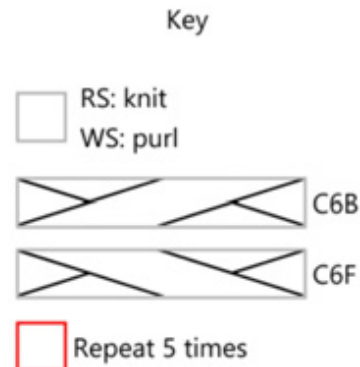
Notes:
[TUTORIAL FOR CABLING HERE](#)
There are both written and charted instructions for this square, follow which ever makes your heart happy.

Yarn:
3x Yellow 4027

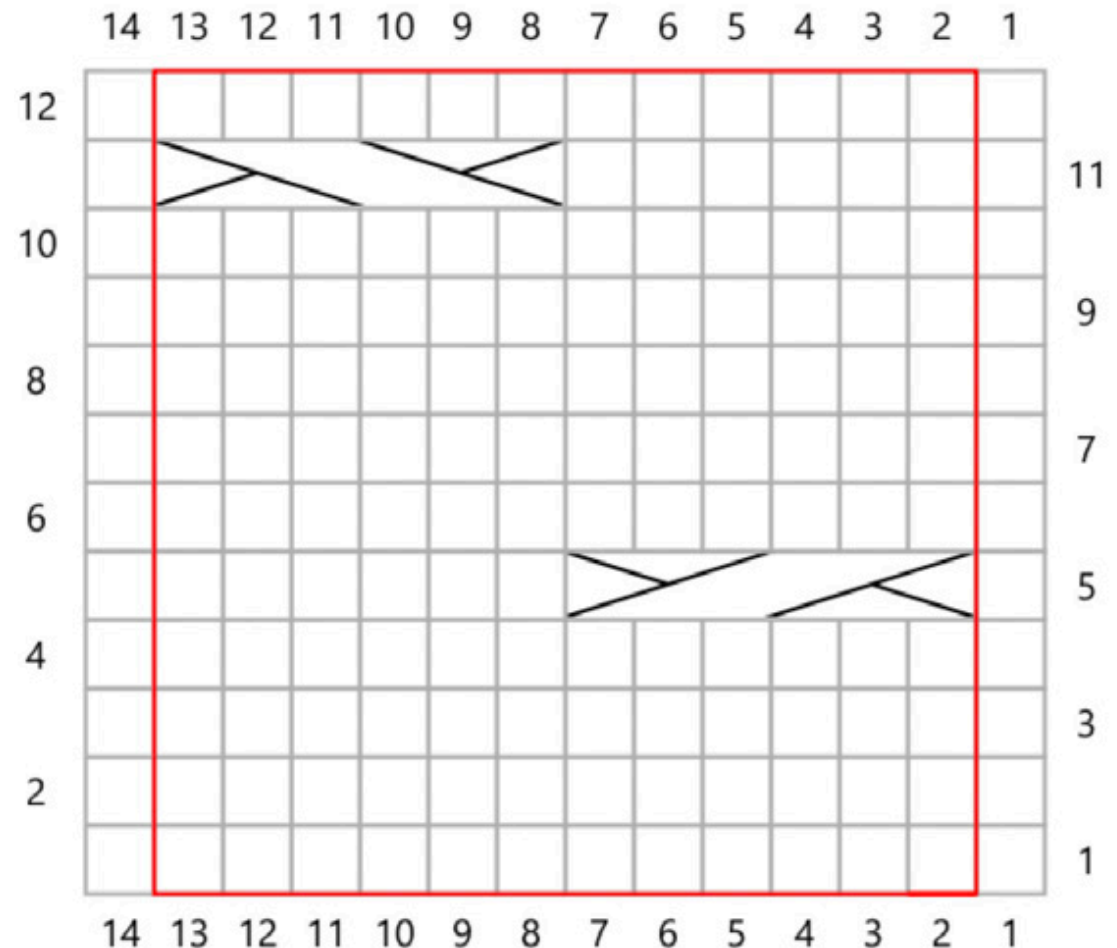
Block measures:
25cm wide x 25cm tall
(10in x 10in)

Needles:
Straight 4mm (UK8, US6)
Cable Needle

Tension:
DK yarn: 22 sts and 28 rows to 10cm (4in) over st-st using 4mm needles



CHARTED INSTRUCTIONS



Week Five - Shopping List

This week we will be knitting the two beautiful and technical Sea Foam Squares. To do this, we will need...

King Cole Big Value DK 50g
in the following colours:

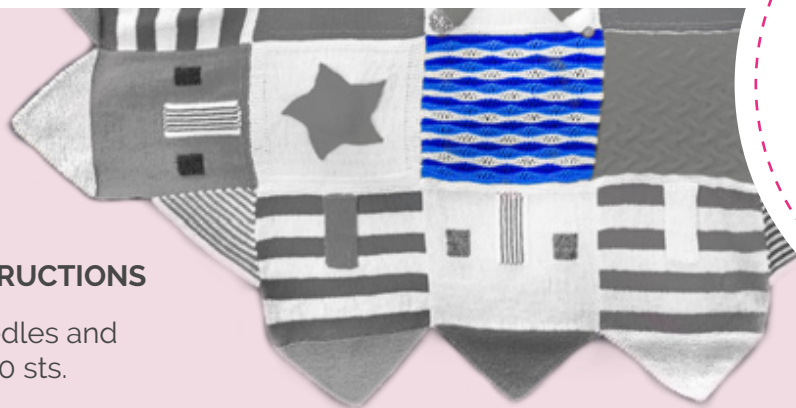
1 x Royal 4041
1 x Saxe 4040
1 x White 4020

This week we will also need knitting needles in **straight 3.25mm (UK 10, USA 3)** so in case you haven't got a set already, now's your chance!



Week Five - Pattern

SEA FOAM SQUARE - MAKE 2



WRITTEN INSTRUCTIONS

Using 4mm needles and Royal, cast on 50 sts.

BORDER

Row 1(RS): Knit.

Row 2: (K9, k2tog) four times, k6. 46 sts

Change to 3.25mm needles (see note on needle size)

SEA FOAM PATTERN

Row 1: Sl1, knit to end.

Row 2: Sl1, k10, (yo once, k1, yo twice, k1, yo three times, k1, yo twice, k1, yo once, k6) three times, k5.

Row 3: Sl1, k10, (drop one yo st from needle, k1, drop two yo sts from needle, k1, drop three yo sts from needle, k1, drop two yo sts from needle,

k1, drop one yo st from needle, k6) three times, k5. 46 sts

Row 4: Sl1, knit to end.

Change yarn

Row 5: Sl1, knit to end.

Row 6: Sl1, k5, (yo once, k1, yo twice, k1, yo three times, k1, yo twice, k1, yo once, k6) four times.

Row 7: Sl1, k5, (drop one yo st from needle, k1, drop two yo sts from needle, k1, drop three yo sts from needle, k1, drop two yo sts from needle, k1, drop one yo st from needle, k6) four times. 46 sts

Row 8: Sl1, knit to end.

Change to white and continue with the 8 row sequence, changing colour every 4 rows until each colour has been worked 6 times. Work one more stripe in Royal Blue and one in Saxe.

BORDER

Change to 4mm needles

Row 1: (K10, m1) four times, k6. 50 sts

Row 2: Sl1, knit to end.

Repeat row 2 until piece measures 25cm (10in) from cast-on edge.

Cast off loosely.

Darn in ends and block.

Yarn:

1 x Royal 4041
1 x Saxe 4040
1 x White 4020

Needles:

Straight 4mm
(UK8, USA 6)

Straight 3.25mm
(UK 10, USA 3)

Please read notes on tension.

Notes:

The Seafoam Square is knitted using a much smaller needle to help give the fabric structure. You should use a needle size $\frac{3}{4}$ to 1 size smaller than you used to achieve stocking stitch tension.

You may find that the square is slightly larger 26 x 26cm (10.25in x 10.25in). This will be fine as it is a lacy pattern, however, if your square is any larger you will have to reduce the needle size further and reknit.

The square is knit in the following stripe sequence, changing yarn where indicated in the pattern:

- Royal Blue
- Saxe Blue
- White

Block measures:

25cm wide x
25cm tall
(10in x 10in)

Tension:

DK yarn: 22 sts and 28 rows to 10cm (4in) over st st using 4mm needles

Special Abbreviations:

Yo once: This is the standard yarn over.

Yo twice: To create a double yarn over, bring the yarn forward, wrap the yarn around the needle as if to knit, bring the yarn forward a second time, you will have two additional 'yarn overs' on your needle.

Yo three times: To create a triple yarn over, work as the double yarn over, working one more yarn over.

Why the different yarn overs? Adding additional yarnovers (or wraps around the needle) increases the length of the dropped stitch on the next row. This is how we achieve the interesting wave texture.

Drop one yo st: On the previous row you have made a series of yarn overs, these yarn overs are NEVER knitted and are dropped off the needles to form 'dropped' elongated stitches. Simply slip the yarn over 's' off the needle and do not work them.

Week Six - Shopping List

This week we will be knitting Beach Huts A and C. To do this, we will need...

King Cole Big Value DK 50g
in the following colours:

3 x White 4020
3 x Fuchsia 4034
2 x Turquoise 4044

You may find that you have excess yarn from previous weeks. Please check your stocks before shopping.

This week we will also need two sets of knitting needles:
Straight 4mm (UK8, USA 6)
Straight 3.25mm (UK10, USA 3)
so in case you haven't got a set already, now's your chance!



Week Six - Pattern

BEACH HUT A - MAKE 2

WRITTEN INSTRUCTIONS

Using 4mm needles and White yarn, cast on 57 sts.
Rows 1(RS)-6: Knit.
Change to Fuchsia yarn
Row 7: Knit.
Row 8: Purl.
Rows 9-16: Continue to work in stocking stitch as set.
Change to White yarn
Rows 17-26: Beg with a Knit row, work in stocking stitch as set.
Change to Fuchsia yarn
Rows 27-36: Beg with a Knit row, work in stocking stitch as set.
Change to White yarn
Rows 37-46: Beg with a Knit row, work in stocking stitch as set.
Change to Fuchsia yarn
Rows 47-56: Beg with a Knit row, work in stocking stitch as set.

Change to White yarn
Rows 57-66: Beg with a Knit row, work in stocking stitch as set.
Change to Fuchsia yarn
Rows 67-76: Beg with a Knit row, work in stocking stitch as set.
Change to White yarn
Continue to Knit every row (working in garter stitch) until piece measures 25cm (10in) from cast-on edge.

ROOF

Row 1: Ssk, knit to last 2 sts, k2tog. 55 sts
Row 2: Knit.
Repeat rows 1 & 2 until 5 sts rem.
Next row (WS): Sl1, ssk, psso, k2tog, pass last stitch over. One st remains.
Cut yarn and pull through rem st to fasten off.

DOOR

Using 3.25mm needles and White yarn, cast on 27 sts.
Rows 1(RS)-22: Knit.
Cast off purlwise.
Darn in ends. Using chart as a guide sew door into position.
Block.

Yarn:

2 x White 4020
2 x Fuchsia 4034

You may find that you have excess yarn from previous weeks. Please check your stocks before shopping.

Needles:

Straight 4mm (UK8, USA 6)
Straight 3.25mm (UK10, USA 3)

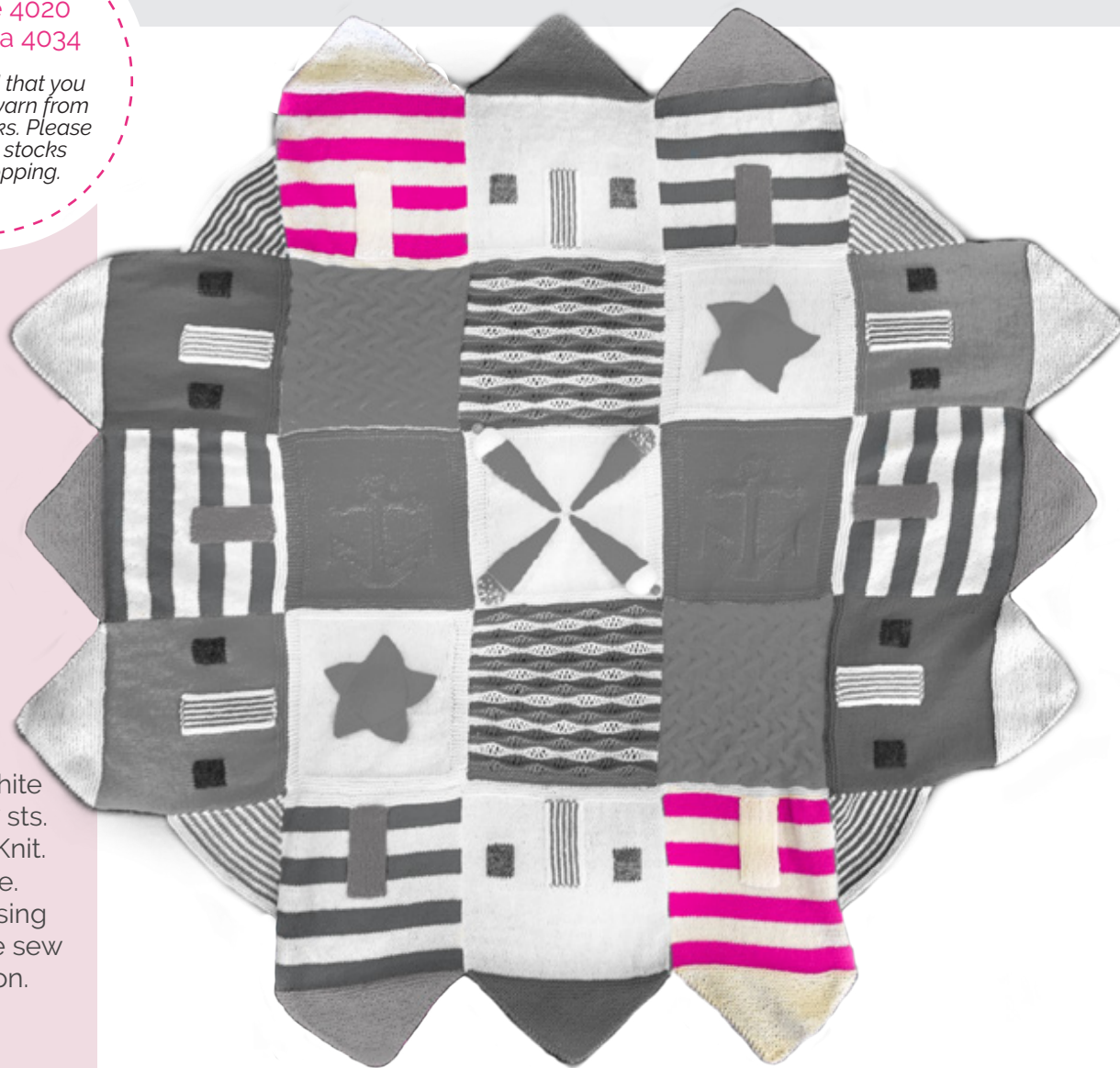
Tension:

DK yarn: 22 sts and 28 rows to 10cm (4in) over st st using 4mm

Block measures: 25cm wide x 38cm tall (10in x 15in)

Notes:

The door is knitted as a separate piece and sewn on at the end, see the Beach Hut A Chart for placement.



Week Six - Pattern

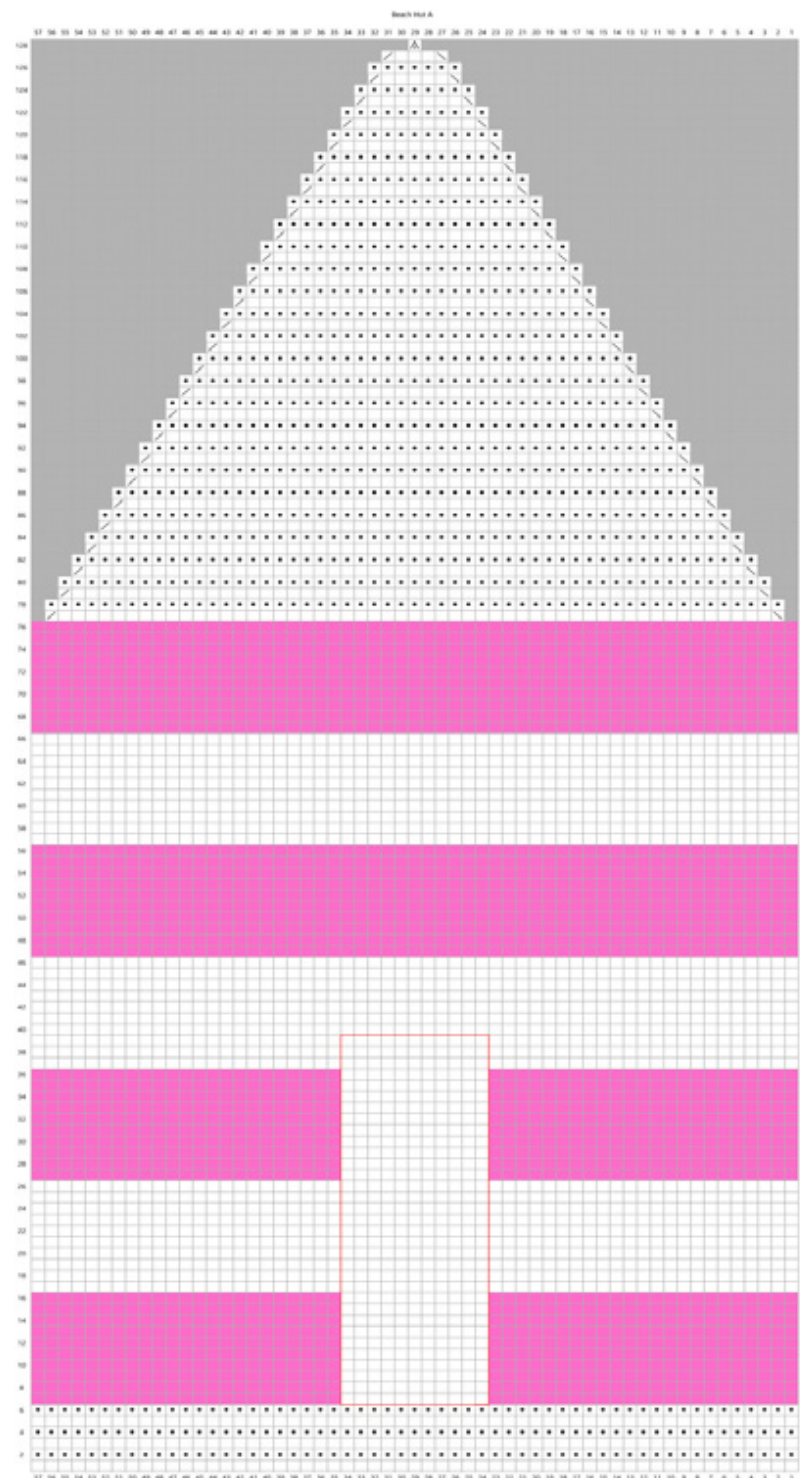
BEACH HUT A - MAKE 2

CHARTERED INSTRUCTIONS

Using 4mm needles and White yarn, cast on 57 sts.

Work from chart to end (remember the door is added afterwards, so work this section of the chart in White and Fuchsia stripes as set in stocking stitch).

Cut yarn and pull through rem st to fasten off. Darn in ends. Make door as per written instructions above. Using chart as a guide sew door into position. Block.



Week Six - Pattern

BEACH HUT C - MAKE 4

WRITTEN INSTRUCTIONS

Using 4mm needles and White yarn, cast on 57 sts.
Rows 1(RS)-6: Knit.
Change to Turquoise yarn
Row 7: Knit.
Row 8: Purl.
Rows 9-16: Continue to work in stocking stitch as set.
Change to White yarn
Rows 17-26: Beg with a Knit row, work in stocking stitch as set.
Change to Turquoise yarn
Rows 27-36: Beg with a Knit row, work in stocking stitch as set.
Change to White yarn
Rows 37-46: Beg with a Knit row, work in stocking stitch as set.
Change to Turquoise yarn
Rows 47-56: Beg with a Knit row, work in stocking stitch as set.
Change to White yarn

Rows 57-66: Beg with a Knit row, work in stocking stitch as set.
Change to Turquoise yarn
Rows 67-76: Beg with a Knit row, work in stocking stitch as set.
Change to Fuchsia yarn
Continue to Knit every row (working in garter stitch) until piece measures 25cm (10in) from cast-on edge.

ROOF

Row 1: Ssk, knit to last 2 sts, k2tog. 55 sts
Row 2: Knit.
Repeat rows 1 & 2 until 5 sts rem.
Next row (WS): Sl1, ssk, psso, k2tog, pass last stitch over. One st remains.
Cut yarn and pull through rem stitch to finish. Darn in ends and block.

DOOR

Using 3.25mm needles and Fuchsia yarn, cast on 27 sts.
Rows 1(RS)-22: Knit.
Cast off purlwise.
Darn in ends. Using chart as a guide sew door into position.
Block.

Yarn:

2 x White 4020
2 x Fuchsia 4034
2 x Turquoise 4044

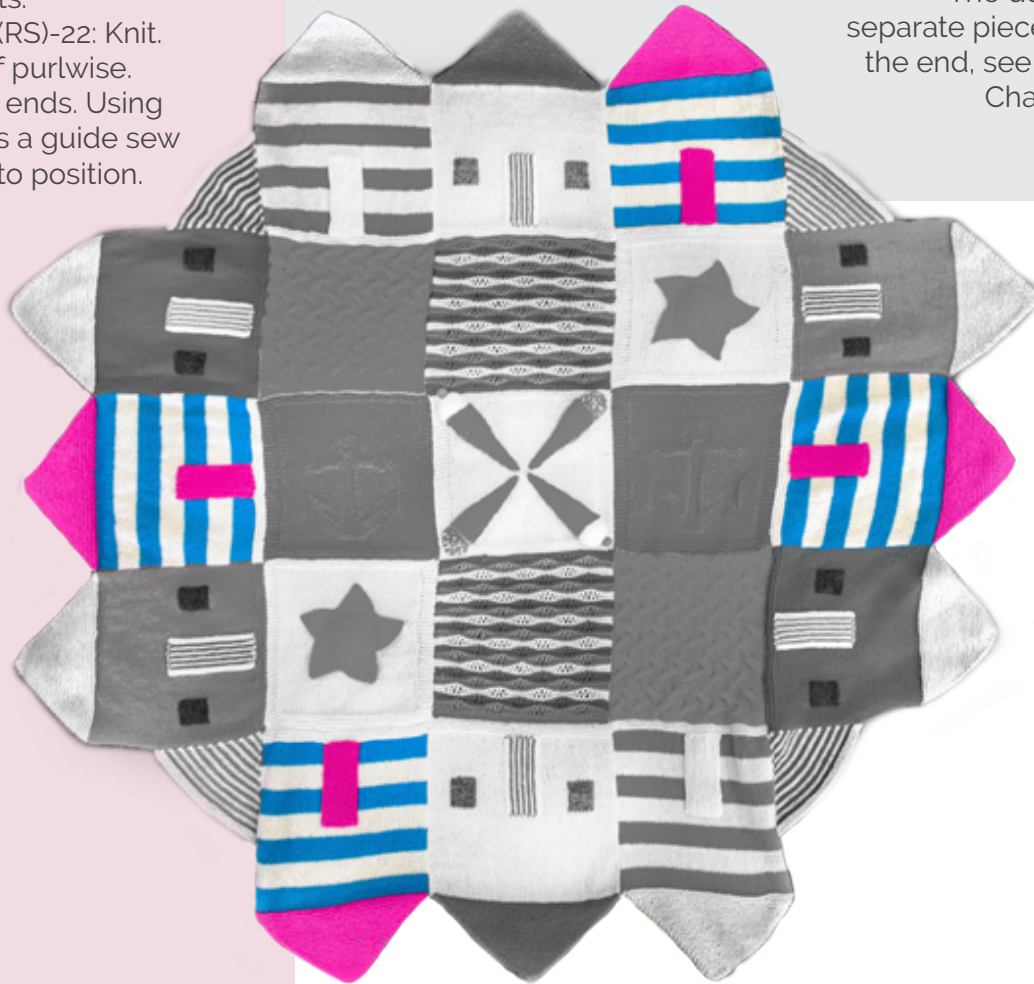
You may find that you have excess yarn from previous weeks. Please check your stocks before shopping.

Block measures:
25cm wide x 25cm tall
(10in x 10in)

Needles:
Straight 4mm (UK8, USA 6)
Straight 3.25mm (UK10, USA 3)

Tension:
22 sts and 28 rows to 10cm (4in)
over st st using 4mm needles

Notes:
The door is knitted as a separate piece and sewn on at the end, see the Beach Hut C Chart for placement.



Week Six - Pattern

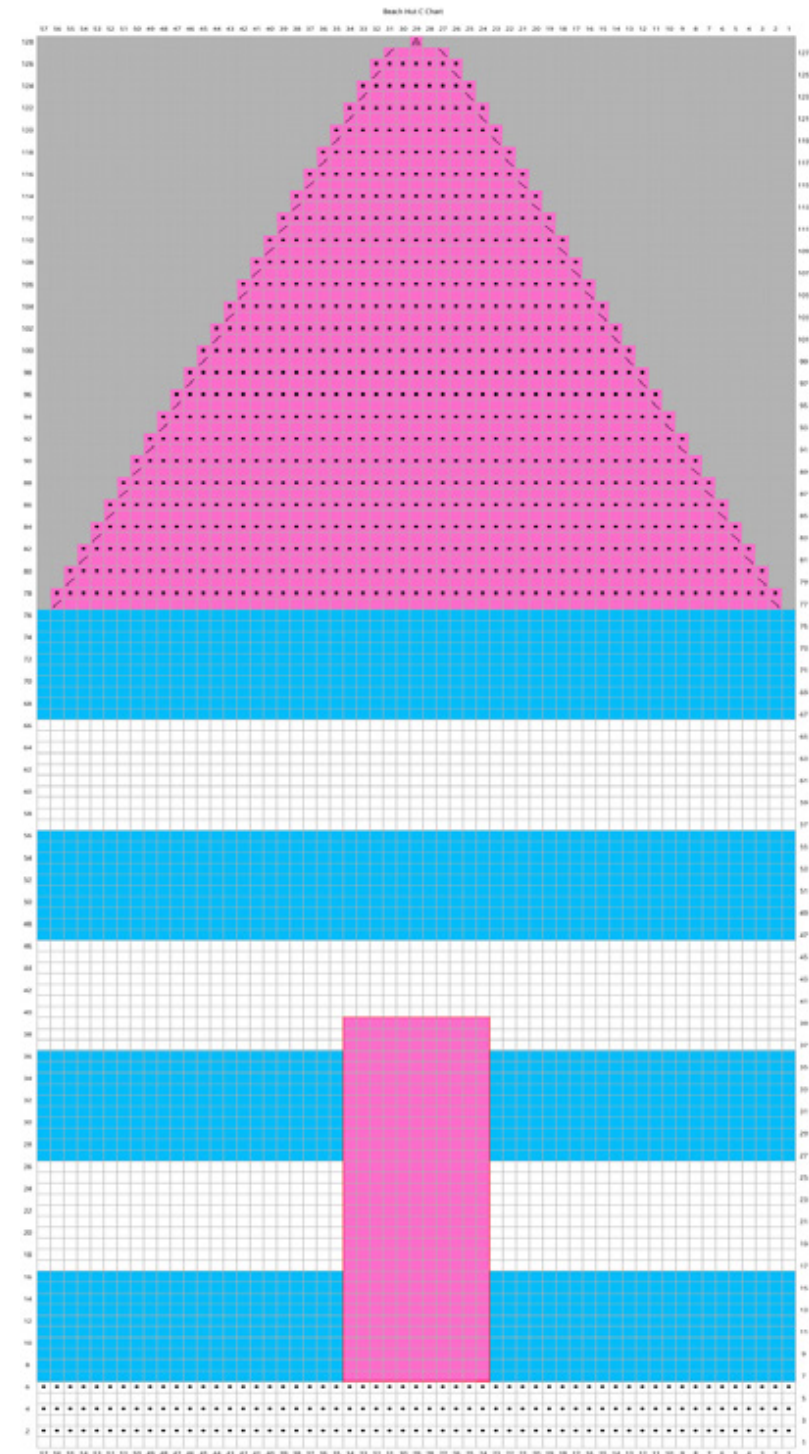
BEACH HUT C - MAKE 4

CHARTERED INSTRUCTIONS

Using 4mm needles and White yarn, cast on 57 sts.

Work from chart to end (remember the door is added afterwards, so work this section of the chart in White and Turquoise stripes as set in stocking stitch).

Cut yarn and pull through rem st to fasten off. Make door as per written instructions above. Using chart as a guide sew door into position. Darn in ends and block.



Week Seven - Shopping List

This week we will be knitting the Ice Cream Cone Square. To do this, we will need...

King Cole Big Value DK 50g in the following colours:

3 x White 4020

2 x Yellow 4027

Oddments of Turquoise 4044

Oddments of Fuchsia 4034

You may find that you have excess yarn from previous weeks. Please check your stocks before shopping.

This week we will also need three types of knitting needle:

Straight 4mm (UK8, USA 6)

Straight 3.25mm (UK10, USA 3)

and a cable needle.

You will also need **toy stuffing** and optional **yellow sewing thread and needle**. Head down to your local stockist today!



Week Seven - Pattern

ICE CREAM CONES - MAKE 1

WRITTEN INSTRUCTIONS

SQUARE:

Using 4mm needles and White yarn, cast on 57 sts.
Rows 1(RS)-6: Knit.
Row 7: Knit.
Row 8: K6, p45, K6.
Repeat rows 7 & 8 until piece measures 23cm (9in) from cast-on edge
Repeat rows 1-6 once more.
Cast off loosely.

CONES: (make four)

*Using 3.25mm needles and Yellow yarn, cast on 22 sts.
Row 1 (RS): Purl.
Row 2 (WS): Knit.
Row 3: K1, (C2F, C2B) five times, k1.
Row 4: Purl.
Row 5: K1, (C2B, C2F) five times, k1.
Row 6: Purl.
Row 7: K1, (C2F, C2B) five times, k1.
Rows 8-11: Repeat rows 4-7.

Yarn:

3 x White 4020
2 x Yellow 4027
odds of Turquoise 4044
odds of Fuchsia 4034

You may find that you have excess yarn from previous weeks. Please check your stocks before shopping.

Row 12: Purl.
Row 13: Ssk, k1, (C2F, C2B) four times, k1, k2tog. 20 sts
Row 14: Purl.
Row 15: Ssk, (C2B, C2F) four times, k2tog. 18 sts
Row 16: Purl.
Row 17: K1, (C2F, C2B) four times, k1.
Row 18: P2tog tbl, p14, p2tog. 16 sts
Row 19: K2, (C2F, C2B) three times, k2.
Row 20: Purl.
Row 21: Ssk, (C2B, C2F) three times, k2tog. 14 sts
Row 22: Purl.
Row 23: K1, (C2F, C2B)

three times, k1.
Row 24: Purl.
Row 25: K1, (C2B, C2F) three times, k1.
Row 26: Purl.
Row 27: Ssk, k1, (C2B, C2F) twice, k1, k2tog. 12 sts
Row 28: Purl.
Row 29: K2, (C2F, C2B) twice, k2.
Row 30: P2tog tbl, p8, p2tog. 10 sts
Row 31: K1, (C2B, C2F) twice, k1.
Row 32: Purl.
Row 33: K1, (C2F, C2B) twice, k1.
Row 34: P2tog tbl, p6, p2tog. 8 sts

Block measures: 25cm wide x 25cm tall (10in x 10in)

Needles:

Straight 4mm (UK8, USA 6)
Straight 3.25mm (UK10, USA 3)
Cable needle

Also Needed:

Yellow sewing thread and needle (optional)
Toy stuffing

Tension:

DK yarn: 22 sts and 28 rows to 10cm (4in) over st st using 4mm needles

Special Abbreviations:

C2F: Slip next stitch to cable needle and place at front of work, k1, then k1 from cable needle.

C2B: Slip next stitch to cable needle and place at back of work, k1, then k1 from cable needle.

P2tog tbl: Purl 2 stitches together working through back loop of both sts.

Notes:

There are both written and charted instructions for the cones, follow which ever makes your heart happy.



Week Seven - Pattern

ICE CREAM CONES - MAKE 1

CHARTERED INSTRUCTIONS

Using 3.25mm needles and Yellow yarn, cast on 22 sts. Work rows 1-45 from chart. Cut yarn and pull through rem st.

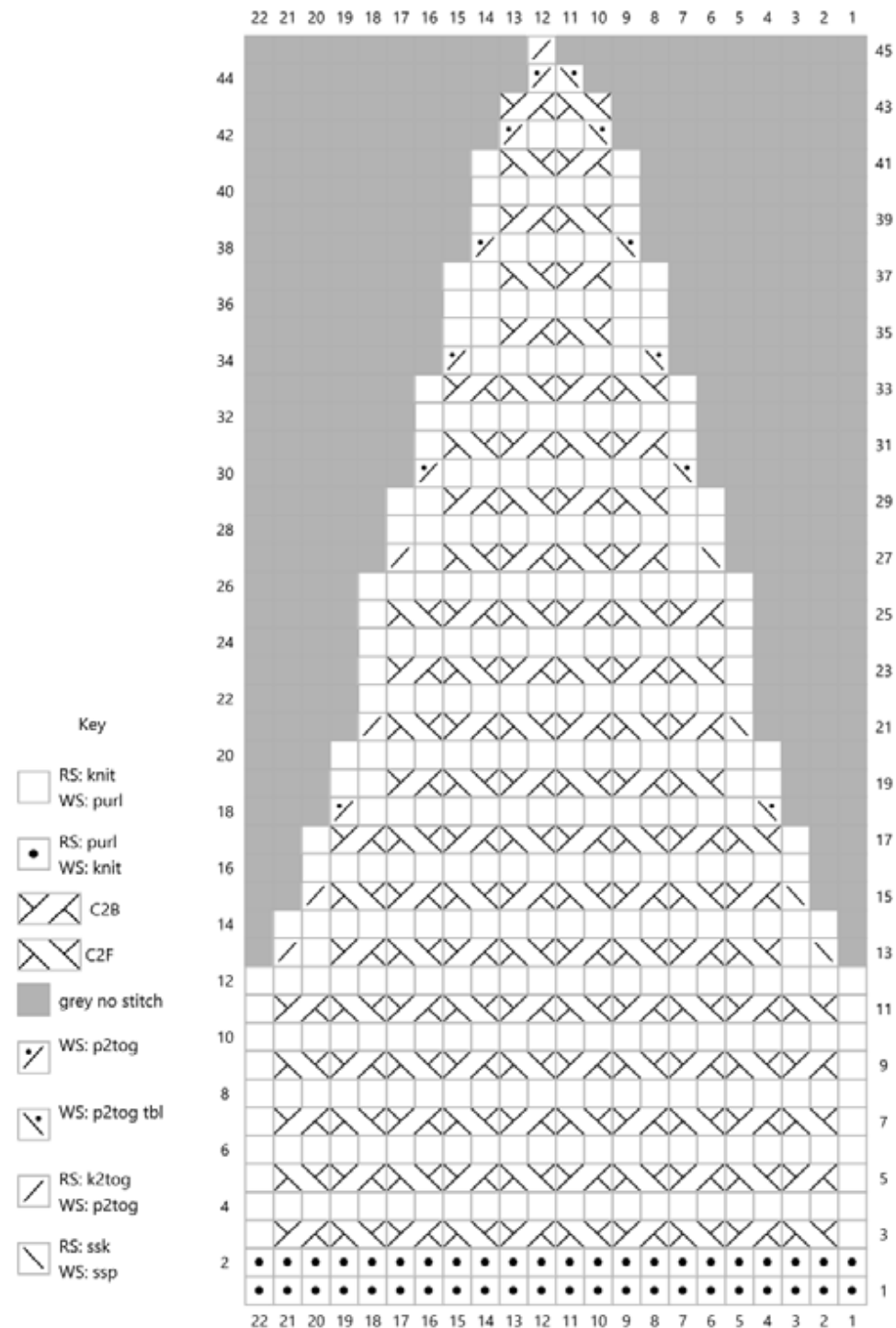
Ice Cream: (make two in Fuchsia and two in White)
Using 3.25mm needles, cast on 24 sts.
Row 1 (WS): Purl.
Row 2: Knit.
Row 3: Purl.
Row 4: K2, m1, (k4, m1) 5 times, k2. 30 sts
Row 5: Purl.
Row 6: Knit.
Row 7: Purl.
Row 8: (K3, k2tog) 6 times. 24 sts
Row 9: Purl.
Row 10: (K2, k2tog) 6 times. 18 sts
Row 11: Purl.
Row 12: (K1, k2tog) 6 times. 12 sts
Row 13: (P2tog) 6 times. 6 sts

Leave a long tail, cut yarn. Using tapestry needle thread through rem 6 sts and pull tight to form top of ice cream (do not sew back seam).

To make up:
Using image as a guide, pin cones to the White Block, allow the cone to curve. Once happy sew cones into place adding a small amount of stuffing as you work. (You might find using yellow sewing thread a neater way to sew on cones). Leave the top of the cone open. Pin Ice Cream so that the Cone slightly overlaps the Ice Cream. Once happy, stuff the Ice Cream and sew to Block. When working the Fuchsia Ice Cream, embroider on sugar sprinkles using Yellow,

White and Turquoise. When working the White Ice Cream, make two Cherries as shown below and sew to top of Ice Cream.

Cherries: (make two)
Using 3.25mm needles and Fuchsia yarn, cast on 6 sts.
Row 1(WS): Purl.
Row 2: Knit.
Repeat rows 1 & 2 twice more.
Row 7: Purl.
Leave a long tail, cut yarn. Using tapestry needle thread through rem 6 sts, work a running stitch down the side, across the cast-on edge and up the remaining side. Add a small amount of stuffing to the centre and pull the yarn drawing the piece into a ball shape. Secure with sts.



Week Eight - Shopping List

This week we will be knitting the wind break corners and making up the blanket. To do this, we will need...

King Cole Big Value DK 50g in the following colours:

1 x White 4020
1 x Fuchsia 4034
1 x Turquoise 4044

You may find that you have excess yarn from previous weeks. Please check your stocks before shopping.

This week we will be using straight 4mm (UK8, USA 6) knitting needles.



Week Eight - Pattern

WIND BREAK CORNERS AND MAKING UP BLANKET

WRITTEN INSTRUCTIONS

WINDBREAK A:

(make two)

Using 4mm needles and White yarn, cast on 45 sts.

Rows 1-4: Knit.

Change to Turquoise yarn

Row 5: K1, ssk, knit to last 3 sts, k2tog, k1. 43 sts

Row 6: Purl.

Change to White yarn

Row 7: K1, ssk, knit to last 3 sts, k2tog, k1. 41 sts

Row 8: Purl.

Repeat rows 5-8 changing colours every two rows as set until 5 sts rem.

Row 45: Ssk, k1, k2tog. 3 sts

Row 46: Purl.

Row 47: Sl1, k2tog, pssso. One st

Cut yarn and pull through to fasten off.

WINDBREAK B:

(make two)

Work as Windbreak A switch Turquoise yarn for Fuchsia yarn.

MAKING UP BLANKET

You should now have all your completed blocks and they have had their ends woven in and have had a wet block making sure each block is the correct size, (this will help the pieces lay flat and ease sewing up). If you are not familiar with mattress stitch I would recommend that you spend some time learning this skill as it will give the tidiest finish to your blanket. If you prefer you could use either back stitch or whip stitch to join the blocks.

Step One:

Using the image as a guide, sew the outer rows of Beach Huts together. You should have four rows of Beach Huts:

Row 1: Beach Huts A – B – C

Row 2: Beach Huts D – C – E

Row 3: Beach Huts A – B – C

Row 4: Beach Huts D – C – E

Step two:

Note: that as the stitch count varies in the centre nine blocks, I suggest that you pin these squares together before sewing them together and ease in any excess fabric. Using the image as a guide, pin the centre nine blocks together,

Yarn:

1 x White 4020
1 x Fuchsia 4034
1 x Turquoise 4044

You may find that you have excess yarn from previous weeks. Please check your stocks before shopping.

Block measures: 20cm wide x 17cm deep (8in x 7in)

Needles:

Straight 4mm (UK8, USA 6)

Tension:

DK yarn: 22 sts and 28 rows to 10cm (4in) over st st using 4mm needles

Notes:

Do not cut the yarn at end of each stripe, carry the working yarn up the side. Nobody wants to weave in all those ends!

I did this in three rows of blocks:

Row 1: Sand – Sea – Sun

Row 2: Anchor – Ice Cream Cones – Anchor

Row 3: Sun – Sea – Sand

Step three:

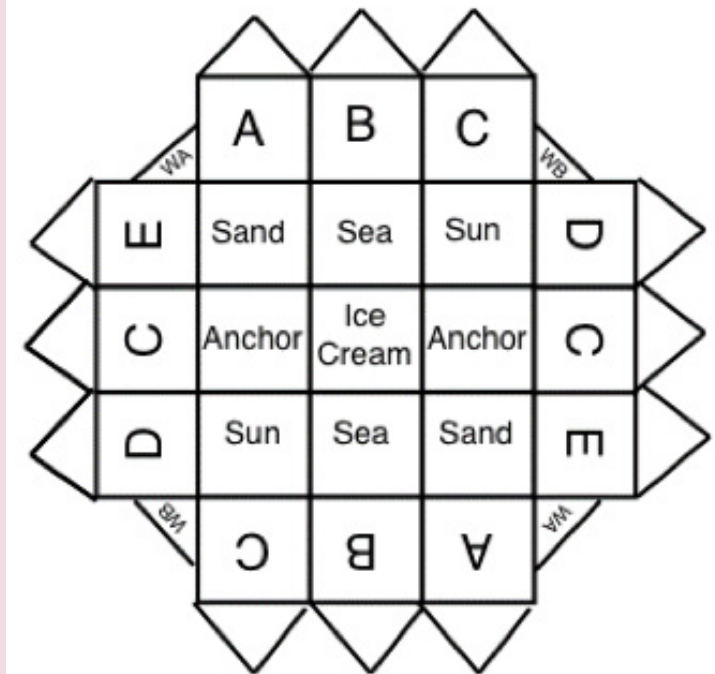
Sew centre nine blocks together using image as a guide.

Step four:

Using image as a guide, sew Beach Huts around the centre nine squares.

Step Four:

Pin Windbreaks into corners using image as a guide, once happy, sew into position. Darn in all ends securely and gently block.



Final Product

Thanks for joining us in making the Beach Hut Blanket! We hope you enjoyed creating it as much as we enjoyed sharing it.



If you've got lots of yarn left over, please watch this space for a gorgeous matching cushion pattern! Coming soon...