

Heather on the Moors

Views across the moors with purple moorland heathers covering much of the landscape. In this view the sun is setting and the silhouette of a single tree can be seen.

Using **Yarn A**, make 38ch.

Row 1 (WS) 1 tr in 4th ch from hook (the 3 missed ch count as first tr), 1 tr in each ch to end, join with **Yarn B** at end of final st, turn. [36 sts]

On Rows 2 - 13 do not cut the yarn after changing colour, it can be brought up the side and re-joined when next needed.

Row 2 (RS) 3ch (counts as first tr here and throughout), 1 tr in next st and in each st to end, join with **Yarn F** at end of final st, turn.

Row 3 (WS) 1ch (does not count as st here and throughout), 1 dc in each of first 2 sts, (1 dtr in next st, 1 dc in next st) to end, join with **Yarn G** at end of final st, turn.

Row 4 (RS) 3ch, (1 htr in next st, 1 tr in next st) until final st, 1 tr in final st, re-join with **Yarn B** at end of final st, turn.

Row 5 (WS) Repeat Row 3 re-joining with **Yarn F** at end of row.

Row 6 (RS) Repeat Row 4 re-joining with **Yarn G** at end of row.

Rows 7 - 12 Repeat Rows 3 - 4 three times more changing colours in sequence, from **Yarn B** to **Yarn F** to **Yarn G**, each time bringing the

yarn up from previous rows, at end of Row 12 do not change colour.

Row 13 (WS) 2ch (counts as first htr here and throughout), * 1 dc in each of next 4 sts, 1 htr in next st, 1 tr in each of next 4 sts, 1 htr in next st, repeat from * two times, 1 dc in each of next 4 sts, 1 htr in final st, re-join with **Yarn B** at end of final st, turn. [36 sts]

In Row 14 the stitches are worked into the back loop only (blo).

Row 14 (RS) 2ch, * 1 tr in blo of each of next 4 sts, 1 htr in blo of next st, 1 dc in blo of each of next 4 sts, 1 htr in blo of next st, repeat from * two times, 1 tr in blo of each of next 4 sts 1 htr in blo of final st, turn.

Row 15 (WS) 2ch, * 1 tr in each of next 4 sts, 1 htr in next st, 1 dc in each of next 4 sts, 1 htr in next st, repeat from * two times, 1 tr in each of next 4 sts 1 htr in final st, join with **Yarn C** at end of final st, turn.

In Row 16 the stitches are worked into the back loop only (blo).

Row 16 (RS) 2ch, * 1 dc in blo of each of next 4 sts, 1 htr in blo of next st, 1 tr in blo of each of next 4 sts, 1 htr in blo of next st, repeat from * two times, 1 dc in blo of each of next 4 sts, 1 htr in blo of final st, turn. [36 sts]

Row 17 (WS) 3ch, 1 tr in next st and each st to end, turn.

Rows 18 - 19 Repeat Row 17, at the end of Row 19 join with **Yarn D**.

Rows 20 - 21 Repeat Row 17, at the end of Row 21 join with **Yarn E**.

Rows 22 - 24 Repeat Row 17, at the end of Row 24 fasten off.

BORDER

Round 1 (RS) Keep RS facing and go back to beginning of Row 24, join **Yarn A** into second st in from the right, 3ch (counts as first tr), 2tr in same st, (miss 2 sts, 3tr in next st) to end, miss final st of side, 2ch (first corner made), rotate work ready to crochet down side edge, continue down side edge with 12 groups of 3tr evenly spaced across the rows to bottom, 2ch (second corner), rotate work ready to crochet across bottom edge, miss base of first st, 3tr in base of next st, (miss base of next 2 sts, 3tr in base of next st) until end of side, miss final st, 2ch (third corner), rotate work ready to crochet up next side edge, continue with 12 groups of 3tr evenly spaced across the rows to the top, 2ch (final corner), ss to top of first 3 ch, turn. [12 groups of 3-tr on each side with 4 x corner 2-ch-sps]

Round 2 (WS) 3ch (counts as first tr), *(2tr, 1 ch, 2tr) in corner ch-sp,

1 tr in each st to end of side, repeat from * three times, ss to top of first 3 ch, fasten off. [40 sts along top and bottom and 40 sts on each side edge with 4 x corner 1-ch-sps]

TREE

The tree is made in one continuous piece. The pattern is broken down into stages to identify each part as it's made.

Using **Black** make 9ch.

Branch 1: Make a further 9ch, 1 ss in 2nd ch from hook and in each of next 7 ch, Trunk: make 2 ch,

Branch 2: 8ch, 1 ss in 2nd ch from hook and in each of next 6 ch, Trunk: make 2 ch,

Branch 3: 7ch, 1 ss in 2nd ch from hook and in each of next 5 ch, Trunk: make 2 ch,

Branch 4: 5ch, 1 ss in 2nd ch from hook and in each of next 3 ch, Trunk: make 2 ch,

Top Branches: (4ch, 1 ss in 2nd ch from hook and in each of next 2 ch) three times.

Now work back down the trunk, 1 ss in each of next 2 ch of trunk, repeat branch 4, 1 ss in each of next 2 ch of trunk, repeat branch 3, 1 ss in each of next 2 ch of trunk, repeat branch 2, 1 ss in each of next 2 ch of trunk, repeat branch 1, 1 ss in each of next 2 ch, 1 dc in each of next 3 ch, 1 htr in each of next 4 ch, fasten off leaving a long tail of yarn to sew the tree in place on the square.



A City View

A room with an urban view. A large city, like the New York skyline, or a smaller town or suburban area. A room with a view that is constantly active, constantly changing and very busy!

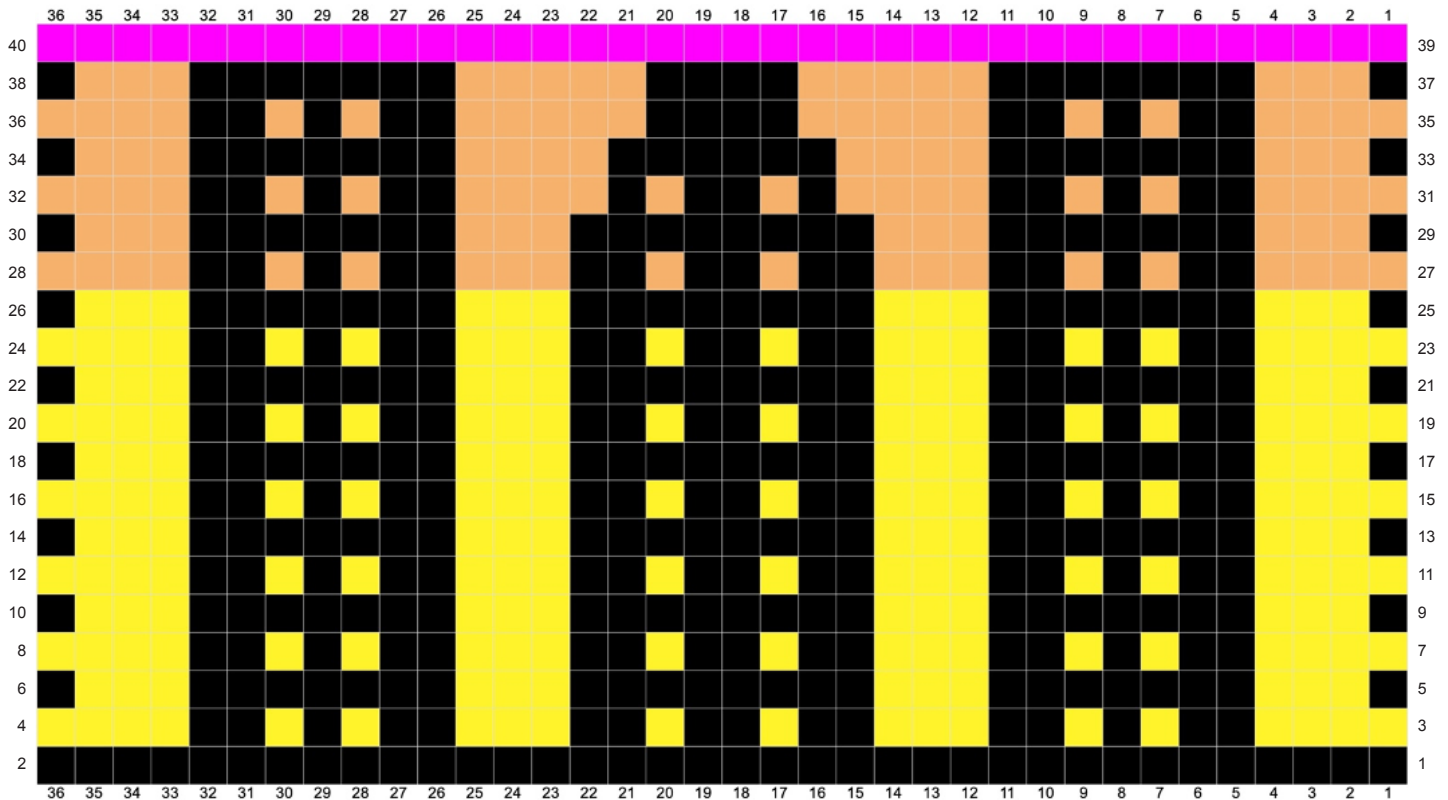
This square is crocheted using the technique of inset Mosaic Crochet. Written instructions continue here but there is also a chart to follow if preferred.

I recommend using half a hook size larger than the hook you're using for the rest of the blanket. Mosaic crochet produces a dense fabric.

On the chart each square represents 1 stitch (either a double crochet, mosaic treble or chain-space). Each row on the chart represents TWO rows of crochet. Read RS rows from right to left and WS rows from left to right. It does not matter if you are left handed because the pattern is symmetrical. Each row begins with 1 ch and then 1 dc in first st, and each row ends with 1 dc in final st.

The first square on the RS rows indicates the colour to be used for that row. Do not fasten off the yarn at the end of each row, the yarn will be carried up along the side of the work to be joined again on subsequent rows.

On RS rows if the square is the same colour as the yarn being used work either a double crochet or mosaic treble. If the square is in the contrasting colour work 2 chains for 1 square, 3 chains for 2 squares, 4 chains for 3 squares etc and miss the corresponding stitches.



Using **Black** and a hook half a hook size larger, make 37ch.

Row 1 (RS) 1 dc in 2nd ch from hook and in each ch to end, turn. [36 sts]

Row 2 (WS) 1 ch (does not count as st here and throughout), 1 dc in each st, join with **Yarn C** at end of final st, turn. [36 sts]

Row 3 (RS) 1 ch, 1 dc in first 4 sts, 3ch, miss 2 sts, 1 dc in next st, 2ch, miss 1 st, 1 dc in next st, 3ch, miss 2 sts, 1 dc in each of next 3 sts, (3ch, miss 2 sts, 1 dc in next st) 3 times, 1 dc in each of next 2 sts, 3ch, miss 2 sts, 1 dc in next st, 2ch, miss 1 st, 1 dc in next st, 3ch, miss 2 sts, 1 dc in each of next 4 sts, turn.

Row 4 (WS) 1 ch, 1 dc in first 4 sts, 3ch, miss 3-ch-sp, 1 dc in next st, 2ch, miss 2-ch-sp, 1 dc in next st, 3ch, miss 3-ch-sp, 1 dc in each of next 3 sts, (3ch, miss 3-ch-sp, 1 dc in next st) 3 times, 1 dc in each of next 2 sts, 3ch, miss 3-ch-sp, 1 dc in next st, 2ch, miss 2-ch-sp, 1 dc in next st, 3ch, miss 3-ch-sp, 1 dc in each of next 4 sts, re-join with **Black** at end of final st, turn.

Row 5 (RS) 1 ch, 1 dc in first st, 4ch, miss 3 sts, 1 mtr in each of next 2 sts, 1 dc in next st, 1 mtr in next st, 1 dc in next st, 1 mtr in each of next 2 sts, 4ch, miss 3 sts, (1 mtr in each of next 2 sts, 1 dc in next st) 2 times, 1 mtr in each of next 2 sts, 4ch, miss 3 sts, 1 mtr in each of next 2 sts, 1 dc in next st, 1 mtr in next st, 1 dc in next st, 1 mtr in each of next 2 sts, 4ch, miss 3 sts, 1 dc in final st, turn.

Row 6 (WS) 1 ch, 1 dc in first st, 4ch, miss 4-ch-sp, 1 dc in each of next 7 sts, 4ch, miss 4-ch-sp, 1 dc in

each of next 8 sts, 4ch, miss 4-ch-sp, 1 dc in each of next 7 sts, 4ch, miss 4-ch-sp, 1 dc in final st, re-join with **Yarn C** at end of final st, turn.

Row 7 (RS) 1 ch, 1 dc in first st, 1 mtr in each of next 3 sts, 3ch, miss 2 sts, 1 dc in next st, 2ch, miss 1 st, 1 dc in next st, 3ch, miss 2 sts, 1 mtr in each of next 3 sts, (3ch, miss 2 sts, 1 dc in next st) 2 times, 3ch, miss 2 sts, 1 mtr in each of next 3 sts, 3ch, miss 2 sts, 1 dc in next st, 2ch, miss 1 st, 1 dc in next st, 3ch, miss 2 sts, 1 mtr in each of next 3 sts, 1 dc in final st, turn.

Row 8 (WS) 1 ch, 1 dc in first 4 sts, 3ch, miss 3-ch-sp, 1 dc in next st, 2ch, miss 2-ch-sp, 1 dc in next st, 3ch, miss 3-ch-sp, 1 dc in each of next 3 sts, (3ch, miss 3-ch-sp, 1 dc in next st) 3 times, 1 dc in each of next 2 sts, 3ch, miss 3-ch-sp, 1 dc in next st, 2ch, miss 2-ch-sp, 1 dc in next st, 3ch, miss 3-ch-sp, 1 dc in each of next 4 sts, re-join with **Black** at end of final st, turn.

Rows 9 – 24 Repeat Rows 5 – 8 four times.

Rows 25 – 26 Repeat Rows 5 – 6 once more, at the end of Row 26 join with **Yarn D**.

Rows 27 – 28 Repeat Rows 7 – 8 once more.

Rows 29 – 30 Repeat Rows 5 – 6 once more, at the end of Row 30 re-join with **Yarn D**.

Row 31 (RS) 1 ch, 1 dc in first st, 1 mtr in each of next 3 sts, 3ch, miss 2 sts, 1 dc in next st, 2ch, miss 1 st, 1 dc in next st, 3ch, miss 2 sts, 1 mtr in each of next 3 sts, 1 dc in next st, 2ch, miss 1 st, 1 dc in next st, 3ch, miss 2 sts, 1 dc in next st, 2ch, miss

1 st, 1 dc in next st, 1 mtr in each of next 3 sts, 3ch, miss 2 sts, 1 dc in next st, 2ch, miss 1 st, 1 dc in next st, 3ch, miss 2 sts, 1 mtr in each of next 3 sts, 1 dc in final st, turn.

Row 32 (WS) 1 ch, 1 dc in first 4 sts, 3ch, miss 3-ch-sp, 1 dc in next st, 2ch, miss 2-ch-sp, 1 dc in next st, 3ch, miss 3-ch-sp, 1 dc in each of next 4 sts, 2ch, miss 2-ch-sp, 1 dc in next st, 3ch, miss 3-ch-sp, 1 dc in next st, 2ch, miss 2-ch-sp, 1 dc in each of next 4 sts, 3ch, miss 3-ch-sp, 1 dc in next st, 2ch, miss 2-ch-sp, 1 dc in each of next 4 sts, re-join with **Black** at end of final st, turn.

Row 33 (RS) 1 ch, 1 dc in first st, 4ch, miss 3 sts, 1 mtr in each of next 2 sts, 1 dc in next st, 1 mtr in next st, 1 dc in next st, 1 mtr in each of next 2 sts, 5ch, miss 4 sts, 1 mtr in next st, 1 dc in next st, 1 mtr in each of next 2 sts, 1 dc in next st, 1 mtr in next st, 5ch, miss 4 sts, 1 mtr in each of next 2 sts, 1 dc in next st, 1 mtr in next st, 1 dc in next st, 1 mtr in each of next 2 sts, 4ch, miss 3 sts, 1 dc in final st, turn.

Row 34 (WS) 1 ch, 1 dc in first st, 4ch, miss 4-ch-sp, 1 dc in each of next 7 sts, 5ch, miss 5-ch-sp, 1 dc in each of next 6 sts, 5ch, miss 5-ch-sp, 1 dc in each of next 7 sts, 4ch, miss 4-ch-sp, 1 dc in final st, re-join with **Yarn D** at end of final st, turn.

Row 35 (RS) 1 ch, 1 dc in first st, 1 mtr in each of next 3 sts, 3ch, miss 2 sts, 1 dc in next st, 2ch, miss 1 st, 1 dc in next st, 3ch, miss 2 sts, 1 mtr in each of next 4 sts, 1 dc in next st, 5ch, miss 4 sts, 1 dc in next st, 1 mtr in each of next 4 sts, 3ch, miss 2 sts, 1 dc in next st, 2ch, miss 1 st, 1 dc in next st, 3ch, miss 2 sts, 1 mtr in each

of next 3 sts, 1 dc in final st, turn.

Row 36 (WS) 1 ch, 1 dc in first 4 sts, 3ch, miss 3-ch-sp, 1 dc in next st, 2ch, miss 2-ch-sp, 1 dc in next st, 3ch, miss 3-ch-sp, 1 dc in each of next 5 sts, 5ch, miss 5-ch-sp, 1 dc in each of next 5 sts, 3ch, miss 3-ch-sp, 1 dc in next st, 2ch, miss 2-ch-sp, 1 dc in next st, 3ch, miss 3-ch-sp, 1 dc in each of next 4 sts, re-join with Black at end of final st, turn.

Row 37 (RS) 1 ch, 1 dc in first st, 4ch, miss 3 sts, 1 mtr in each of next 2 sts, 1 dc in next st, 1 mtr in next st, 1 dc in next st, 1 mtr in each of next 2 sts, 6ch, miss 5 sts, 1 mtr in each of next 2 sts, 1 dc in next st, 1 mtr in next st, 1 dc in next st, 1 mtr in each of next 2 sts, 4ch, miss 3 sts, 1 dc in final st, turn.

Row 38 (WS) 1 ch, 1 dc in first st, 4ch, miss 4-ch-sp, 1 dc in each of next 7 sts, 6ch, miss 6-ch-sp, 1 dc in each of next 4 sts, 6ch, miss 6-ch-

sp, 1 dc in each of next 7 sts, 4ch, miss 4-ch-sp, 1 dc in final st, join with **Yarn E** at end of final st, turn.

Row 39 (RS) 1 ch, 1 dc in first st, 1 mtr in each of next 3 sts, 1 dc in each of next 7 sts, 1 mtr in each of next 5 sts, 1 dc in each of next 4 sts, 1 mtr in each of next 5 sts, 1 dc in each of next 7 sts, 1 mtr in each of next 3 sts, 1 dc in final st, turn.

Row 40 (WS) 1 ch, 1 dc in first st and each st to end, turn. Now change back to the hook size used for the rest of the blanket for the remainder of the square.

Row 41 (RS) 3ch, 1 tr in next st and each st to end, turn.

Rows 42 – 44 Repeat Row 41 three times, at the end of Row 44 join with **Yarn A**, turn.

BORDER

Round 1 (RS) 1 ch (does not count as st), miss first st, ss into next st,

3ch (counts as first tr), 2tr in same st, (miss 2 sts, 3tr in next st) to end, miss final st of side, 2ch (first corner made), rotate work ready to crochet down side edge, continue down side edge with 12 groups of 3tr evenly spaced across the rows to bottom, 2ch (second corner), rotate work ready to crochet across bottom edge, miss base of first st, 3tr in base of next st, (miss base of next 2 sts, 3tr in base of next st) until end of side, miss final st, 2ch (third corner), rotate work ready to crochet up next side edge, continue with 12 groups of 3tr evenly spaced across the rows, 2ch (final corner), ss to top of first 3 ch, turn. [12 groups of 3-tr on each side with 4 x corner 2-ch-sps]

Round 2 (WS) 3ch (counts as first tr), *(2tr, 1 ch, 2tr) in corner ch-sp, 1 tr in each st to end of side, repeat from * three times, ss to top of first 3 ch, fasten off. [40 sts along top and bottom and 40 sts on each side edge with 4 x corner 1-ch-sps]



A Balcony View Across the Lake

*A room with a balcony and a view across the lake...
spectacular! A balcony framed with plants creating a
wonderful place to sit and enjoy the view...*

Pay attention to the colour changes throughout. For Rows 2 - 15 the intarsia method of colour changing is used for the plants at each side. This ensures neat, crisp colour changes, keeping the colours contained to each side and avoids trailing yarn across the work. Each patch of colour is crocheted using a different length of yarn.

You will need to cut a separate 200cm length of Yarn D for one of the plant pots and a 850cm length of Yarn G for one of the plants. Wind them into little balls. The main ball of colour can be used for the other pot and plant.

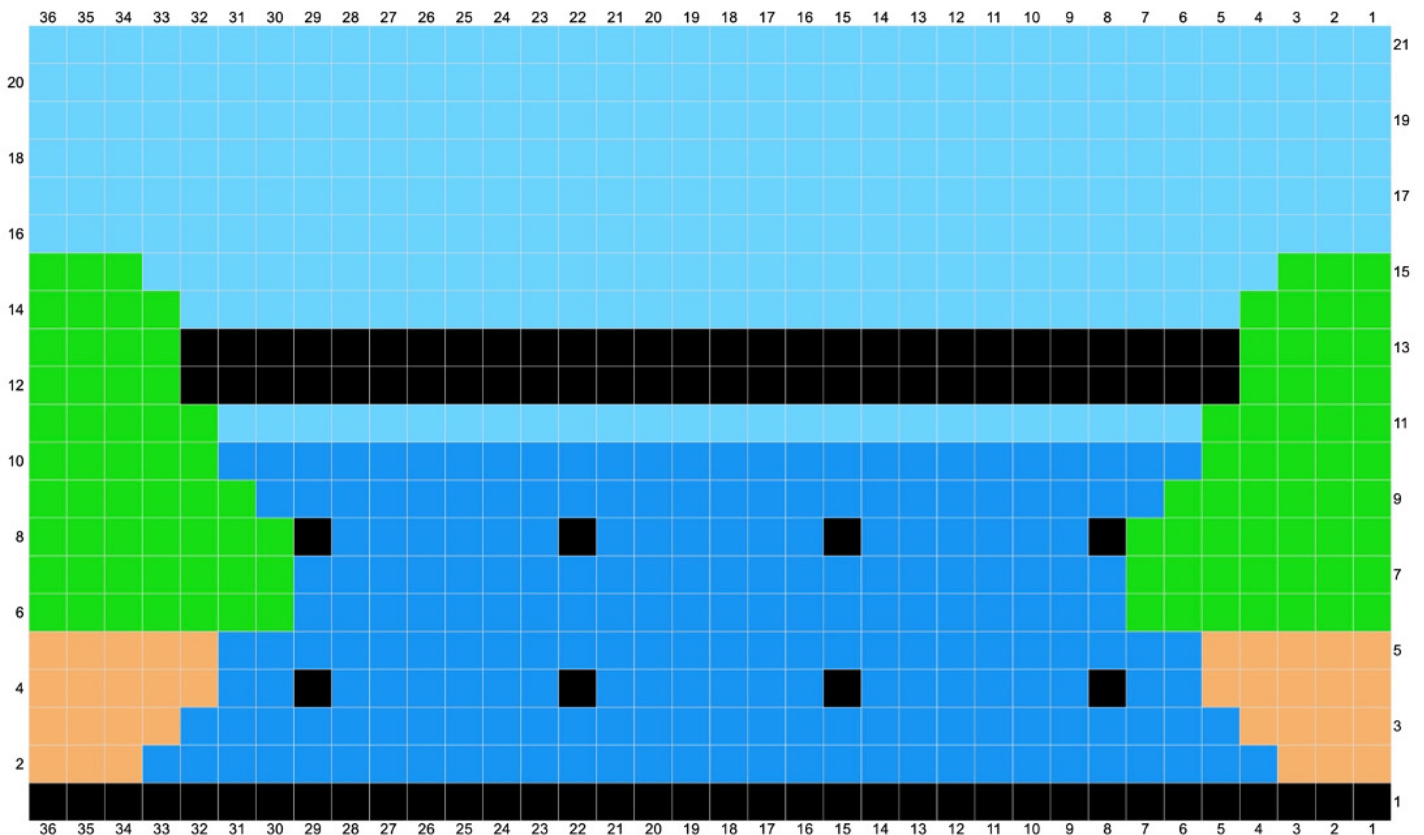
Make sure you keep the non-working yarn to the back (WS) of the work.

In the rows where the balcony railings are crocheted, crochet around the non-working black yarn in-between the raised sts to bring the yarn invisibly along and ready to be re-joined each time.

When changing colours join the new colour at the final yoh of the previous stitch as indicated. Do not fasten off the previous colour used unless indicated otherwise.

The chart can be used for rough guidance only for placement of colour, not for what stitch is used. There are different stitches, raised stitches and chain spaces used in the pattern which are not shown on the chart.

The turning chains count as a stitch throughout unless indicated otherwise. You may want to use a stitch marker in the top of the turning chains making it easier to identify them as the correct stitch to crochet into at the end of the subsequent row.



Using **Yarn A** make 38ch.

Row 1 (WS) 1 tr in 4th ch from hook (the 3 missed ch count as first tr), 1 tr in each ch to end, join with first ball of **Yarn D** at end of final st, turn. [36 sts]

Row 2 (RS) 3ch (counts as first tr here and throughout), 1 tr in each of next 2 sts, change to **Yarn H**, 1 tr in each of next 30 sts, change to next ball of **Yarn D**, 1 tr in each of next 3 sts, turn.

Row 3 (WS) 3ch, 1 tr in next st, 2tr in next st, change to **Yarn H**, miss next st, 1 tr in each of next 28 sts, change to next ball of **Yarn D**, miss next st, 2tr in next st, 1 tr in each of final 2 sts, turn.

In Row 4 crochet around the non-working black Yarn in-between the raised sts to bring the yarn invisibly along and ready to be re-joined each time.

Row 4 (RS) 3ch, 1 tr in each of next 2 sts, 2tr in next st, change to **Yarn H**, miss next st, 1 tr in each of next 2 sts, join with **Black** at end of second st, miss next st instead working 1FPquintr (the stitch starts by wrapping yarn around hook 5 times) around the 8th st in from the right in Row 1 changing back to **Yarn H** at end of st, * 1 tr in each of next 6 sts, re-join with **Black** at end of 6th st, miss next st instead working 1FPquintr around the 7th st along from previous raised st in Row 1 changing back to **Yarn H** at end of st, repeat from * two times, 1 tr in each of next 2 sts, change to next ball of **Yarn D**, miss next st, 2tr in next st, 1 tr in each of final 3 sts, turn.

Row 5 (WS) 3ch, 1 tr in each of next 4 sts, change to **Yarn H**, 1 tr in each of next 26 sts, change to next ball of **Yarn D**, 1 tr in each of next 5 sts, join with first ball of **Yarn G** at end of final st, turn.

Row 6 (RS) 3ch, 1 RS Popcorn in next st, (1 ch, miss next st, 1 RS Popcorn in next st) two times, 1 tr in next st, change to **Yarn H**, 1 tr in each of next 22 sts, change to second ball of **Yarn G**, 1 tr in next st, 1 RS Popcorn in next st, (1 ch, miss next st, 1 RS Popcorn in next st) two times, 1 tr in final st, turn.

Row 7 (WS) 3ch, 1 tr in top of first popcorn, 1 WS popcorn in 1-ch-sp before next popcorn, 1 ch, miss next popcorn, 1 WS popcorn in 1-ch-sp before next popcorn, 1 tr in top of next popcorn, 1 tr in next st, change to **Yarn H**, 1 tr in each of next 22 sts, change to second ball of **Yarn G**, 1 tr in next st, 1 tr in top of next popcorn, 1 WS popcorn in 1-ch-sp before next popcorn, 1 ch, miss next popcorn, 1 WS popcorn in 1-ch-sp before next popcorn, 1 tr in top of next popcorn, 1 tr in final st, turn. In Row 8 crochet around the non-working black yarn in-between the raised sts to bring the yarn invisibly along and ready to be re-joined each time.

Row 8 (RS) 3ch, 1 RS Popcorn in next st, 1 ch, miss next popcorn, 1 RS Popcorn in next 1-ch-sp before next popcorn, 1 ch, miss next popcorn, 1 RS Popcorn in next st, 1 tr in next st, change to **Black**, miss next st instead working 1FPsextTr (the stitch starts by wrapping yarn around hook 6 times) around the raised st below in Row 4 changing back to **Yarn H** at end of st, * 1 tr

in each of next 6 sts, re-join with **Black** at end of 6th st, miss next st instead working 1FPsextTr around the next raised st below in Row 4 changing back to **Yarn H** at end of st, repeat from * two times changing to next ball of **Yarn G** at end of final raised st, 1 tr in next st, 1 RS Popcorn in next st, 1 ch, miss next popcorn, 1 RS Popcorn in next 1-ch-sp before next popcorn, 1 ch, miss next popcorn, 1 RS Popcorn in next st, 1 tr in final st, turn.

Row 9 (WS) 3ch, 1 tr in top of first popcorn, 1 WS popcorn in 1-ch-sp before next popcorn, 1 ch, miss next popcorn, 1 WS popcorn in 1-ch-sp before next popcorn, 1 tr in top of next popcorn, change to **Yarn H**, 1 tr in each of next 24 sts, change to next ball of **Yarn G**, 1 tr in top of next popcorn, 1 WS popcorn in 1-ch-sp before next popcorn, 1 ch, miss next popcorn, 1 WS popcorn in 1-ch-sp before next popcorn, 1 tr in top of next popcorn, 1 tr in final st, turn.

Row 10 (RS) 3ch, 1 RS Popcorn in next st, 1 ch, miss next popcorn, 1 RS Popcorn in next 1-ch-sp before next popcorn, 1 tr in top of next popcorn, change to **Yarn H**, 1 tr in each of next 26 sts, change to next ball of **Yarn G**, 1 tr in top of next popcorn, 1 RS Popcorn in next 1-ch-sp before next popcorn, 1 ch, miss next popcorn, 1 RS Popcorn in next st, 1 tr in final st, turn.

Row 11 (WS) 3ch, 1 tr in top of first popcorn, 1 WS popcorn in 1-ch-sp before next popcorn, 1 tr in top of next popcorn, 1 tr in next st, change to **Yarn J**, 1 tr in each of next 26 sts, change to next ball of **Yarn G**, 1 tr in next st, 1 tr in top of next

popcorn, 1 WS popcorn in 1-ch-sp before next popcorn, 1 tr in top of next popcorn, 1 tr in final st, turn.

Row 12 (RS) 3ch, 1 RS Popcorn in next st, 1 RS Popcorn in top of next popcorn, 1 tr in next st, change to **Black**, 1 tr in each of next 3 sts, miss next st instead working 1FPquintr around the raised st below in Row 8, * 1 tr in each of next 6 sts, miss next st instead working 1FPquintr around the next raised st below in Row 8, repeat from * two times, 1 tr in each of next 3 sts, change to next ball of **Yarn G**, 1 tr in next st, 1 RS Popcorn in top of next popcorn, 1 RS Popcorn in next st, 1 tr in final st, turn.

Row 13 (WS) 1 ch (does not count as st), 1 dc in first st, 1 dc in top of each of next 2 popcorns, 1 dc in

next st, change to **Black**, 1 dc in each of next 3 sts, 1BPhtr around next raised st, * 1 dc in each of next 6 sts, 1BPhtr around next raised st, repeat from * two times, 1 dc in each of next 3 sts, change to **Yarn G**, 1 dc in next st, 1 dc in top of each of next 2 popcorns, 1 dc in final st, turn.

Row 14 (RS) 3ch, 1 RS Popcorn in each of next 2 sts, 1 tr in next st, change to **Yarn J**, 1 tr in blo of each of next 28 sts, change to **Yarn G**, 1 tr in next st, 1 RS Popcorn in each of next 2 sts, 1 tr in final st, turn.

Row 15 (WS) 3ch, 1 WS popcorn in top of first popcorn, 1 tr in top of next popcorn, change to **Yarn J**, 1 tr in each of next 30 sts, change to next ball of **Yarn G**, 1 tr in top of next popcorn, 1 WS popcorn in top

of next popcorn, 1 tr in final st, join with **Yarn J** at end of final st, turn.

Row 16 (RS) 3ch, 1 tr in top of next popcorn, 1 tr in each of next 32 sts, 1 tr in top of next popcorn, 1 tr in final st, turn.

Row 17 (WS) 3ch, 1 tr in next st and each st to end, turn.

Rows 18 – 21 Repeat Row 17 four times, at the end of Row 21 join with **Yarn A**, turn.

BORDER

Round 1 (RS) 1 ch (does not count as st), miss first st, ss into next st, 3ch (counts as first tr), 2tr in same st, (miss 2 sts, 3tr in next st) to end, miss final st of side, 2ch (first corner made), rotate work ready to crochet down side edge, continue down side edge with 12 groups of 3tr evenly spaced across the rows to bottom, 2ch (second corner), rotate work ready to crochet across bottom edge, miss base of first st, 3tr in base of next st, (miss base of next 2 sts, 3tr in base of next st) until end of side, miss final st, 2ch (third corner), rotate work ready to crochet up next side edge, continue across the rows, 2ch (final corner), ss to top of first 3 ch, turn. [12 groups of 3-tr on each side with 4 x corner 2-ch-sps]

Round 2 (WS) 3ch (counts as first tr), *(2tr, 1ch, 2tr) in corner ch-sp, 1 tr in each st to end of side, repeat from * three times, ss to top of first 3 ch, fasten off. [40 sts along top and bottom and 40 sts on each side edge with 4 x corner 1-ch-sps]



Join us next week for Ceiling Rose...